

METROPOLITAN ST. LOUIS
SEWER DISTRICT



NEIGHBORHOOD PROJECT
VIRTUAL
PUBLIC MEETING
August 18, 2020

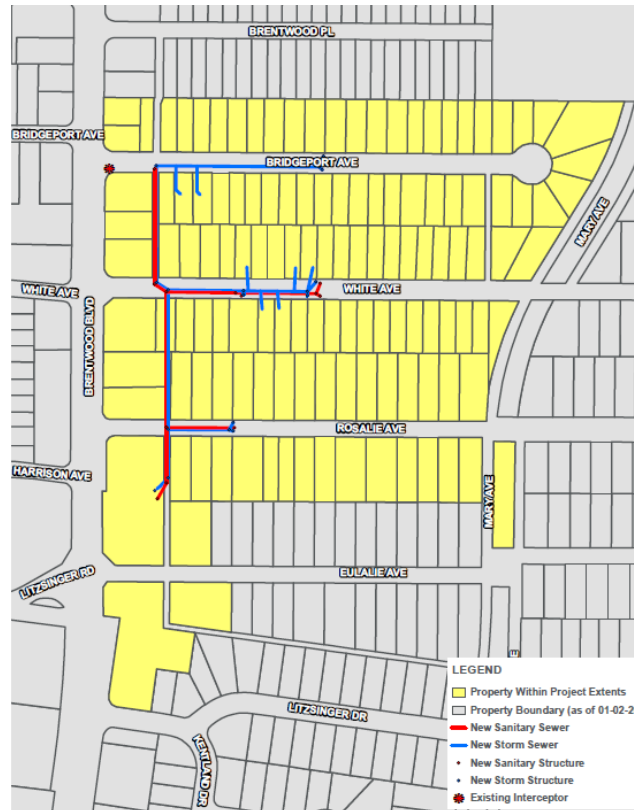
4:00 PM

White & Rosalie I/I Reduction &
Bridgeport Sewer Separation Design
MSD Project No. 11212

Registration required to participate
through a computer or tablet. To register,
visit:

msdprojectclear.org/WRmeeting

For additional project information, visit:
msdprojectclear.org/White-Rosalie



Project Description:

Construction of approximately 1,400 linear feet of 12-inch diameter sanitary sewer and 1,800 linear feet of 15-inch to 30-inch diameter storm sewers.

Project Purpose:

Remove inflow sources from 16 private properties and eliminate one (1) constructed interceptor to alleviate building backups and relieve overcharged sewers.

PROJECT SCHEDULE

Complete Design:	May 2019
Easement Acquisition Start:	May 2019
Easement Acquisition End:	Winter 2020
Tentative Construction Start:	Summer 2021
Tentative Construction End:	Summer 2022



During Construction



After Construction

