

# Spring Avenue Sanitary Relief

Project #12208

May 12, 2021

# Today's Roadmap

- Technology Overview and Ground Rules
- Overview of MSDPC
- Project Overview and Specifics
- Q&A

## Notes on our Virtual Town Hall Platform

- Participants are in listen-and-view mode
- There are several ways to engage
  - Type your question using Q/A icon at the bottom of your screen at any time (even before the Q/A portion has begun)
  - Everyone can read all questions posed and you can “Upvote” questions you want answered

# MSD Project Clear (MSDPC) Overview & Details

- Government Utility
  - State Constitution
  - Voter Approved Charter in 1954
  - 6 Member Board of Trustees (3 City & 3 County)
- Two utilities: Wastewater & Stormwater
- 520 square mile service area
  - All of St. Louis City
  - 87% of St. Louis County
- ~1,300,000 customers
- 88 municipalities served
- 7 Treatment Plants
- 350+ million gallons per day of wastewater treated
- 4,700+ miles of wastewater sewers
- 1,800+ miles of combined sewers
- 3,000+ miles of stormwater sewers
- 4th largest sewer system in the United States (as measured by miles of sewers handling wastewater)

# Spring Avenue— Project #12208

**Mark Dietiker**

MSD Project Manager  
314-768-6380  
mdietiker@stlmsd.com

**Sever Leone**

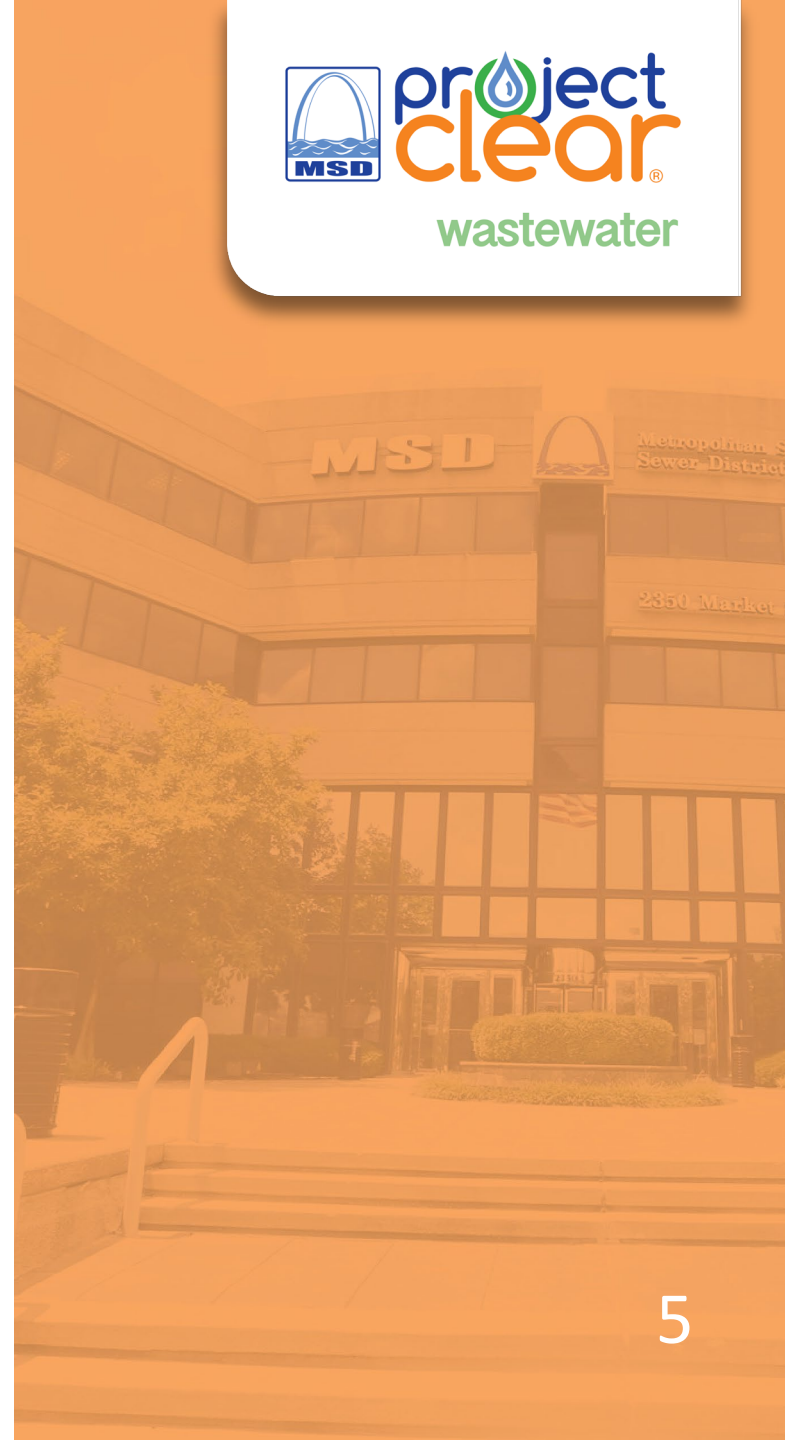
MSD Field Inspector  
314-497-0096  
sleone@stlmsd.com

**Gary Cannon, Contractor**

Wehmeyer Farms, Inc.  
636-368-8264

**Kim Biondo, Contractor**

Wehmeyer Farms, Inc.  
kim@wehmeyerfarms.com  
636-485-1459



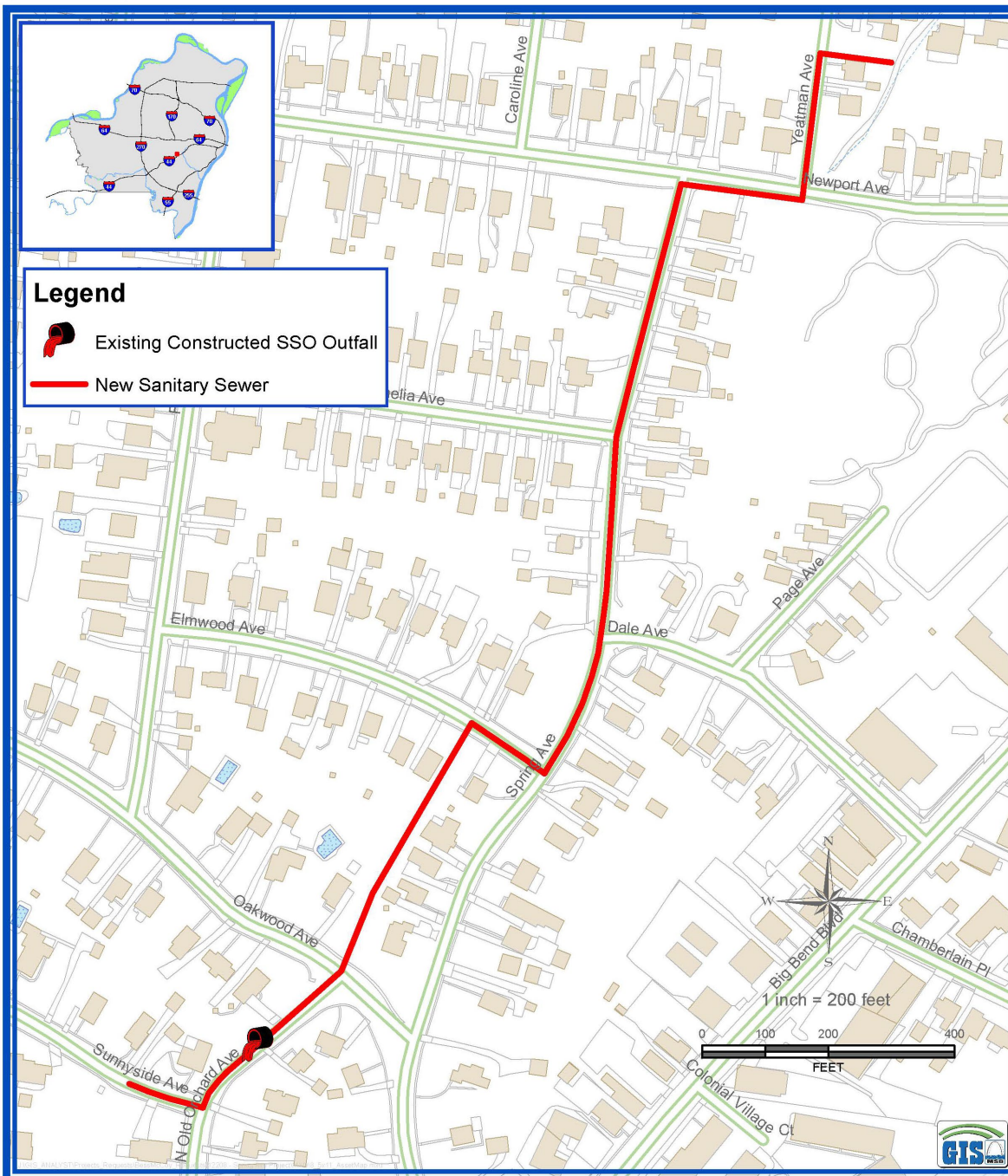
# Project Overview

- General Goal
  - Increase the size of the wastewater pipe in this area
  - Eliminate one overflow point
- Project Scope
  - Approximately 2,580 ft of sewer
  - Pipe sized 6" to 48" in diameter
- Benefits
  - Reduce basement backups
  - Reduce sewer overflows



# Tentative Construction Schedule

- **Start: May 2021**
- **End: Aug. 2022**



## Previous Public Engagement

- June 2019 – Neighborhood Public Meeting
- Municipal Outreach – Webster Groves

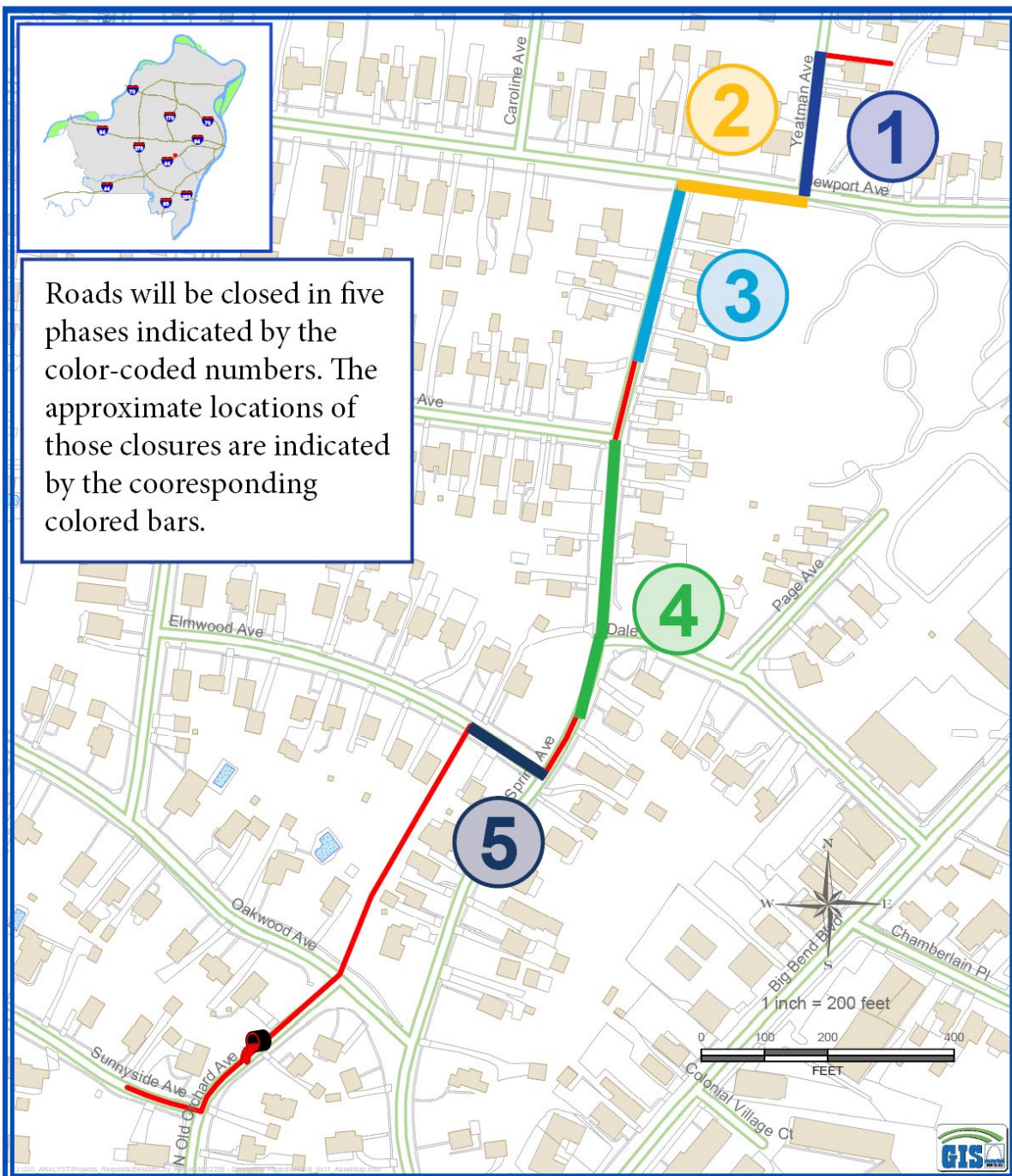


# What can residents expect?

- Trenches or “open-cut” excavation
- Construction noise during normal business hours
- Traffic Control Plan and access issues
  - Lane closures will temporarily affect traffic
  - Temporary access restrictions to residential/commercial properties
- Notify contractor about sprinklers, dog fences, other underground assets

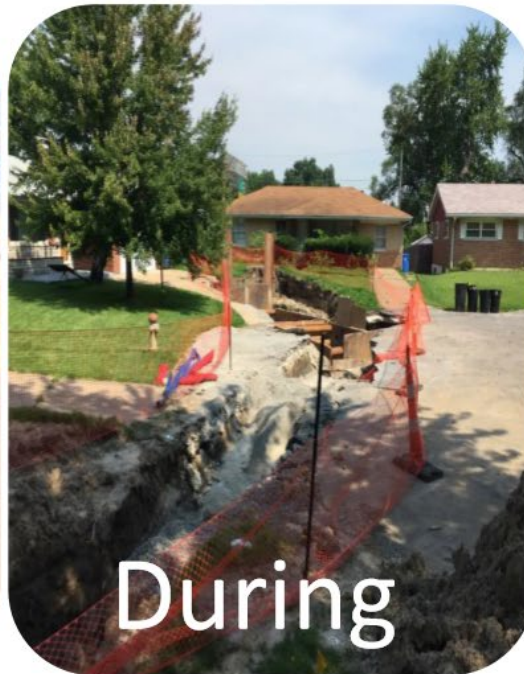
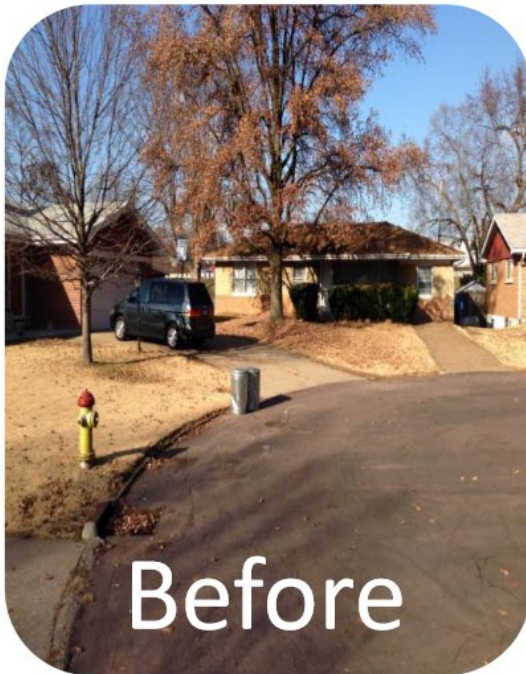
## Traffic Control

- Roads closed in 5 phases
- This map shows approximate locations of closures



# How will it look when construction is finished?

- Trenches backfilled soon after pipe is installed
- Roadway and sidewalk restoration
- Private property restoration per easement





# FAQs

- Will this work disrupt sewer or other utility services?
- Will construction affect access to my property?
- Will trees be removed as part of this project?
- How will this project affect street parking?

# Questions?

**Mark Dietiker**

MSD Project Manager  
314-768-6380  
mdietiker@stlmsd.com

**Sever Leone**

MSD Field Inspector  
314-497-0096  
sleone@stlmsd.com

**Gary Cannon, Contractor**

Wehmeyer Farms, Inc.  
636-368-8264

**Kim Biondo, Contractor**

Wehmeyer Farms, Inc.  
kim@wehmeyerfarms.com  
636-485-1459

[MSDprojectclear.org/Spring](http://MSDprojectclear.org/Spring)

