

GC-06 Gravois Creek to
Briarstone and Gates
Sanitary Relief Phase II
(12157)
Virtual Town Hall

07/01/2021

6 PM

Today's Roadmap

- Technology Overview and Ground Rules
- Overview of MSDPC
- Project Overview and Specifics
- FAQs
- Q&A

Notes on our Virtual Town Hall Platform

- Participants are in listen-and-view mode
- There are several ways to engage
 - Type your question using Q/A icon at the bottom of your screen at any time (even before the Q/A portion has begun)
 - Everyone can read all questions posed and you can “Upvote” questions you want answered

MSD Project Clear (MSDPC) Overview & Details

- Government Utility
 - State Constitution
 - Voter Approved Charter in 1954
 - 6 Member Board of Trustees (3 City & 3 County)
- Two utilities: Wastewater & Stormwater
- 520 square mile service area
 - All of St. Louis City
 - 87% of St. Louis County
- ~1,300,000 customers
- 88 municipalities served
- 7 Treatment Plants
- 350+ million gallons per day of wastewater treated
- 4,700+ miles of wastewater sewers
- 1,800+ miles of combined sewers
- 3,000+ miles of stormwater sewers
- 4th largest sewer system in the United States (as measured by miles of sewers handling wastewater)

Project Manager

Steve Roberts

MSD Project Manager

sroberts@stlmsd.com

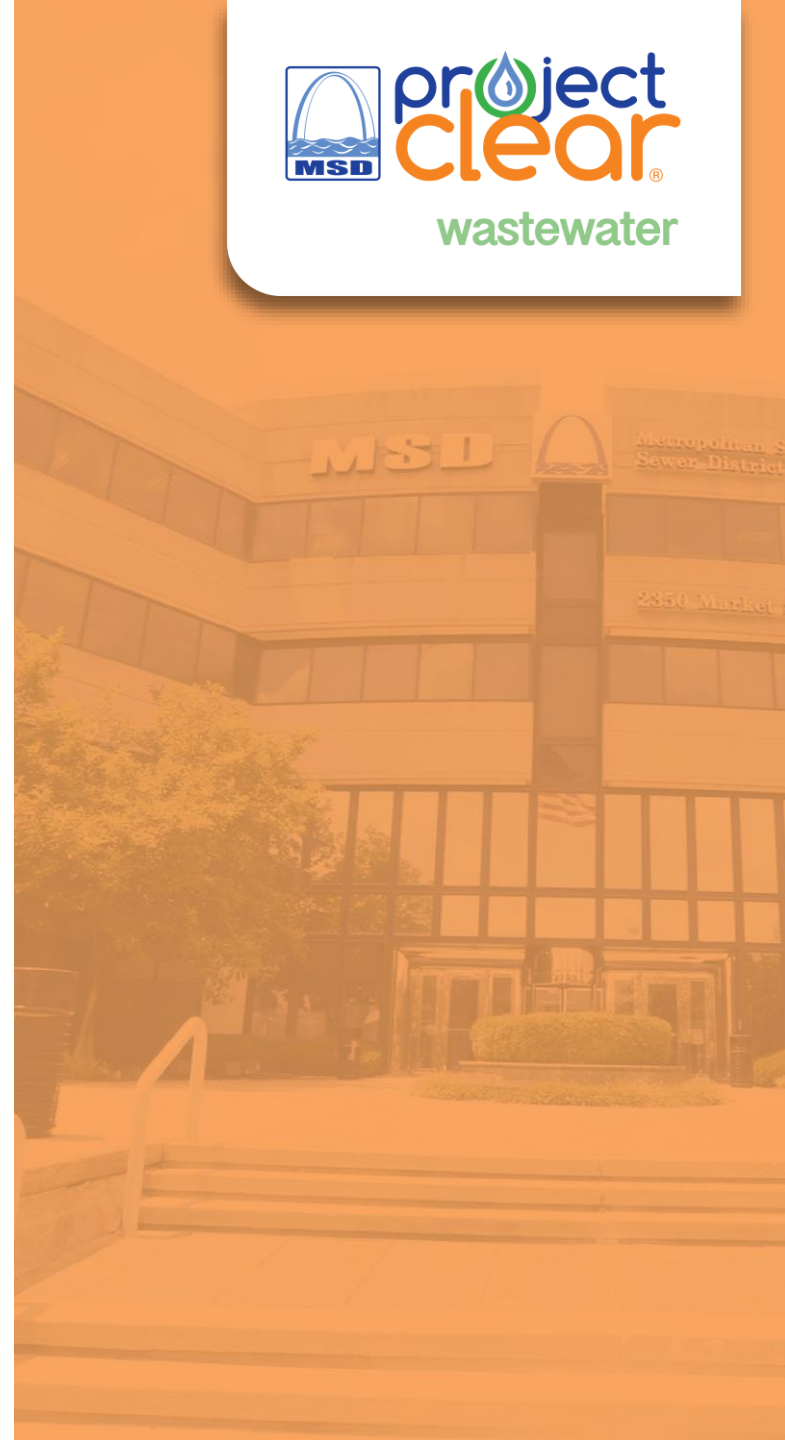
314-768-6310

Alli White

Burns & McDonnell Project Manager

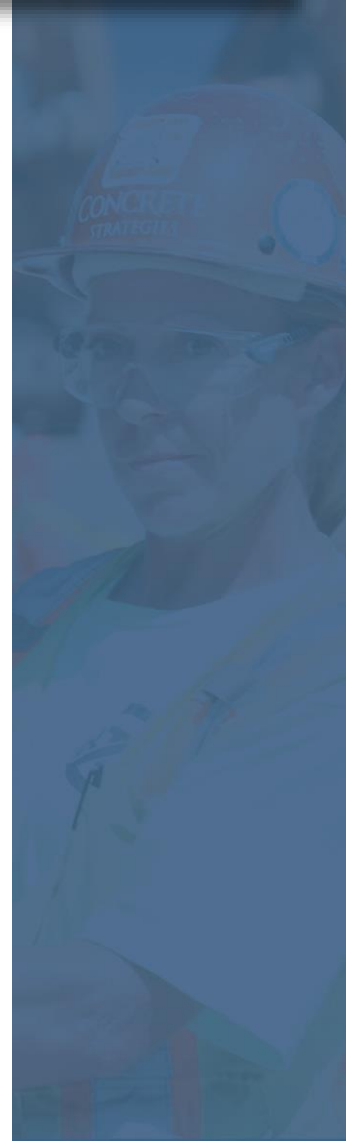
alwhite@burnsmcd.com

314-328-5431



Project Overview

- Origin of Project
 - Instances of sewer surcharges
- Project Goal
 - Increase capacity of system
- Benefits
 - Reduce basement backups and overloading sewers
 - Eliminate one (1) constructed SSO Outfall (BP-382)

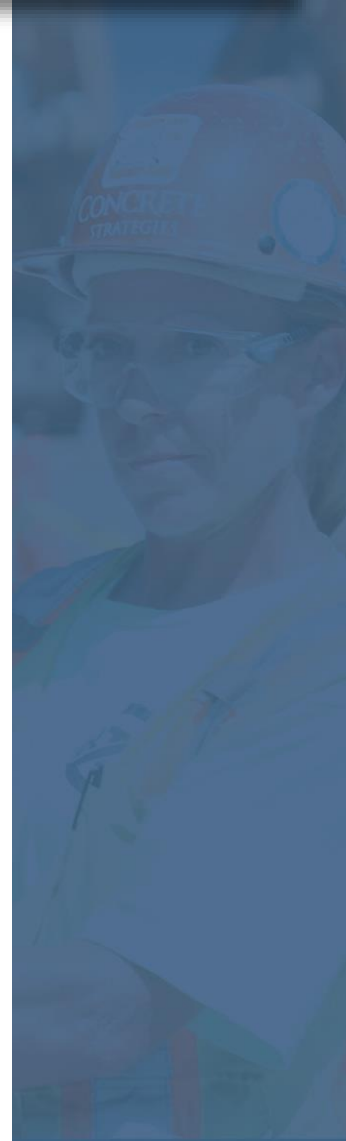


GC-06 Gravois Creek to Briarstone and Gates Sanitary Relief Phase II MSD No. 12157 Sanitary Relief Sewer Construction



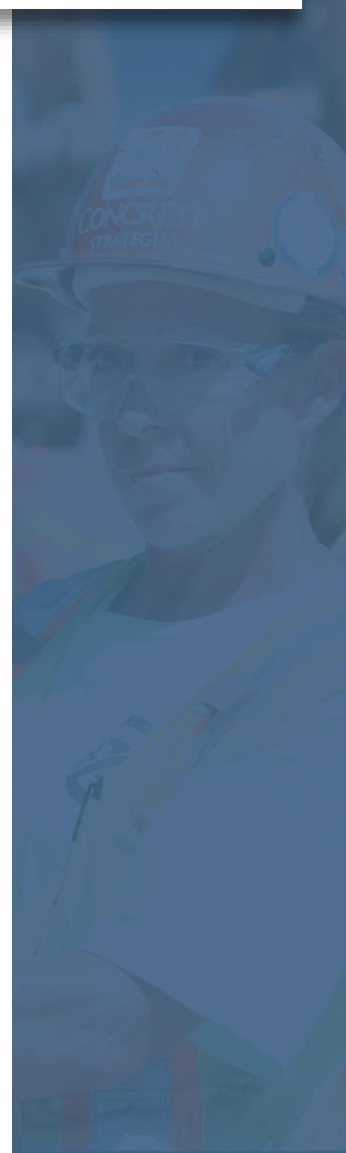
Project Facts

- Length: Approx. 5,000 feet
- Depth: 4-30 feet
- Pipe size: 8"-18"



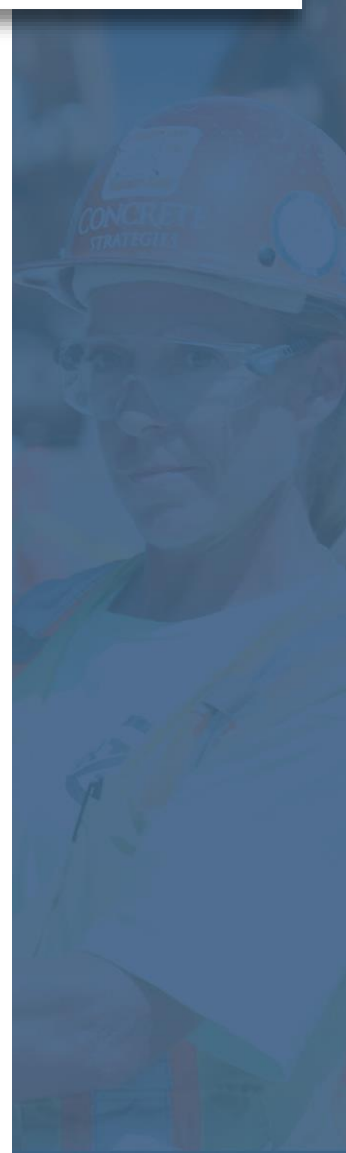
How it will be built

- Open cut construction
- Tunneling under Gravois/Sappington
- Tunneling South of Gravois and East of Westminster Drive
- Equipment

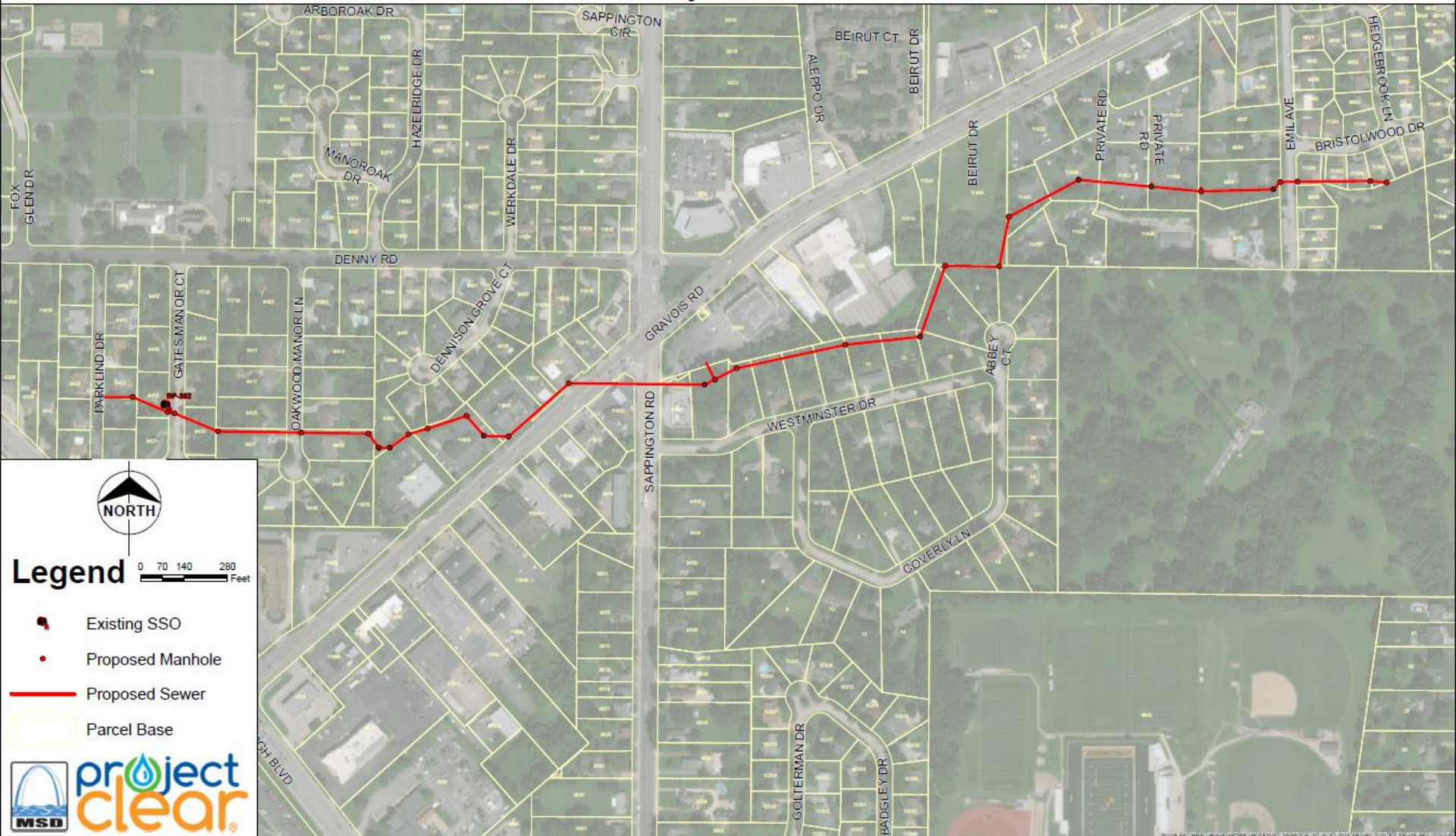


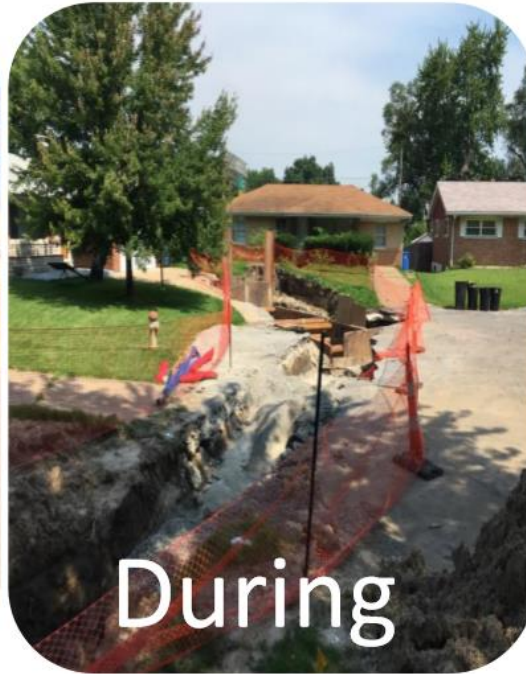
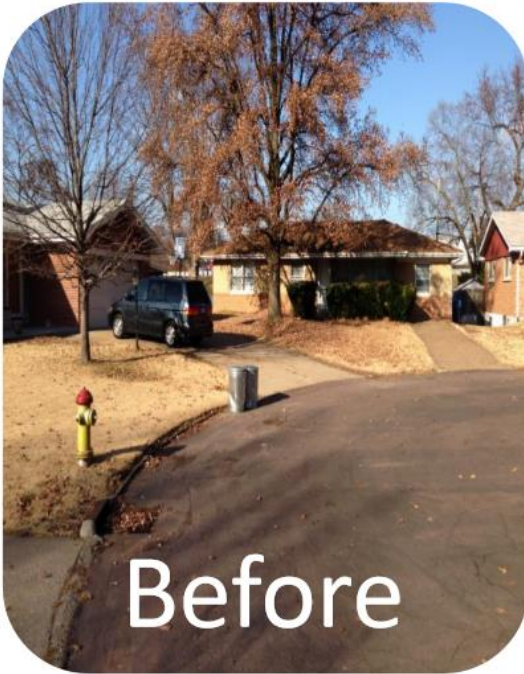
What can residents expect?

- Easements for access to private property
- Traffic impacts at Emil Ave, Sappington Rd, Gravois Rd, Oakwood Manor Ln, Gates Manor Ct, and Parklind Dr
- Impacted Parking Lots at: 11653, 11647, 11627, 11617, 11430, 11426, 11422, 11406 Gravois Rd
- Anticipated access issues (residential/commercial)



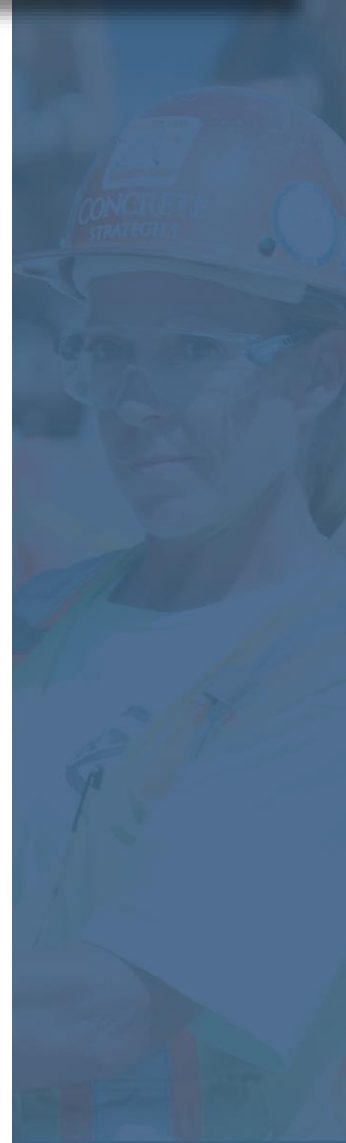
GC-06 Gravois Creek to Briarstone and Gates Sanitary Relief Phase II MSD No. 12157 Sanitary Relief Sewer Construction





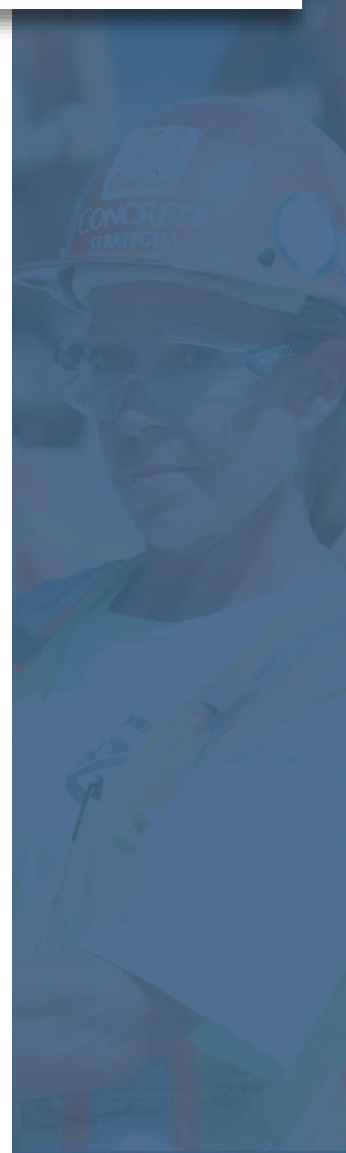
Tentative Construction Schedule

- Project design completion: **Winter 2022**
- Easement acquisition completion: **Fall 2022**
- Estimated construction start: **Spring 2023**
- Estimated project duration: **24 months**



FAQs

- What will the neighborhood look like when construction is finished?
- Will residents lose access to their homes or businesses during construction?



Questions?

Steve Roberts

MSD Project Manager

sroberts@stlmsd.com

314-768-6310

Alli White

Burns & McDonnell Project Manager

alwhite@burnsmcd.com

314-328-5431

msdprojectclear.org/gc06

