

# Larimore Storm Sewers (11530) Virtual Town Hall

# Today's Roadmap

- Technology Overview and Ground Rules
- Overview of MSDPC
- Project Overview and Specifics
- FAQs
- Q&A

## Notes on our Virtual Town Hall Platform

- Participants are in listen-and-view mode
- There are several ways to engage
  - Type your question using Q/A icon at the bottom of your screen at any time (even before the Q/A portion has begun)
  - Everyone can read all questions posed and you can “Upvote” questions you want answered

# MSD Project Clear (MSDPC) Overview & Details

- Government Utility
  - State Constitution
  - Voter Approved Charter in 1954
  - 6 Member Board of Trustees (3 City & 3 County)
- Two utilities: Wastewater & Stormwater
- 520 square mile service area
  - All of St. Louis City
  - 87% of St. Louis County
- ~1,300,000 customers
- 88 municipalities served
- 7 Treatment Plants
- 350+ million gallons per day of wastewater treated
- 4,700+ miles of wastewater sewers
- 1,800+ miles of combined sewers
- 3,000+ miles of stormwater sewers
- 4th largest sewer system in the United States (as measured by miles of sewers handling wastewater)

# Larimore Storm Sewers

**MSD Project Manager:**  
Jennifer Gerwitz, PE

**HR Green Project Manager:**  
Josiah Holst, PE

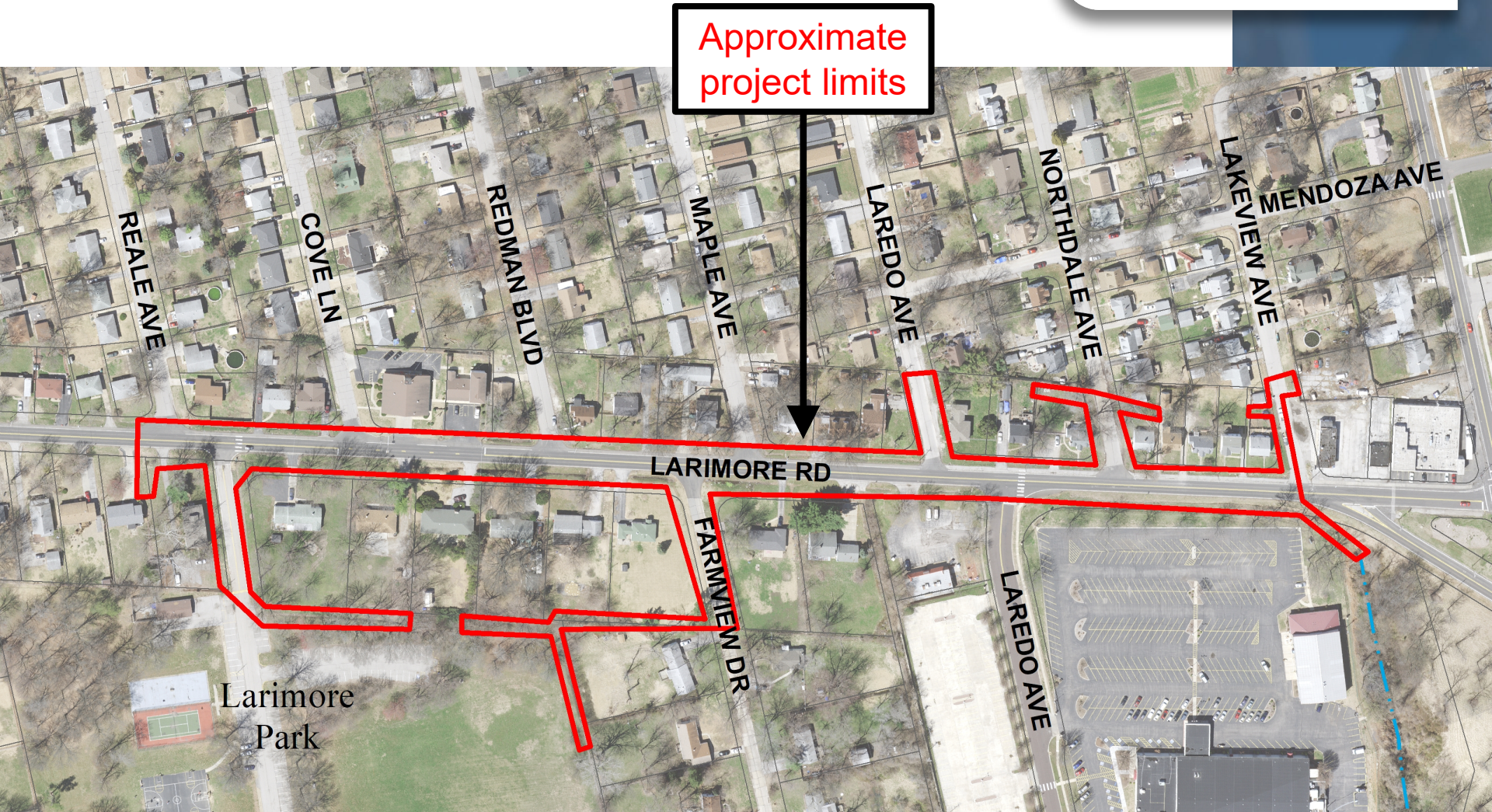


# Project Overview

- Origin of Project:
  - Customer complaints of street and yard flooding
- Project Goal:
  - Reduce flooding by installing storm sewers and inlets to collect and convey runoff.
  - Many existing driveway culverts will be removed because they will no longer be necessary.
- Benefits:
  - Reduce the risk of flooding and reduce the maintenance needed to keep driveway culverts clear of debris.

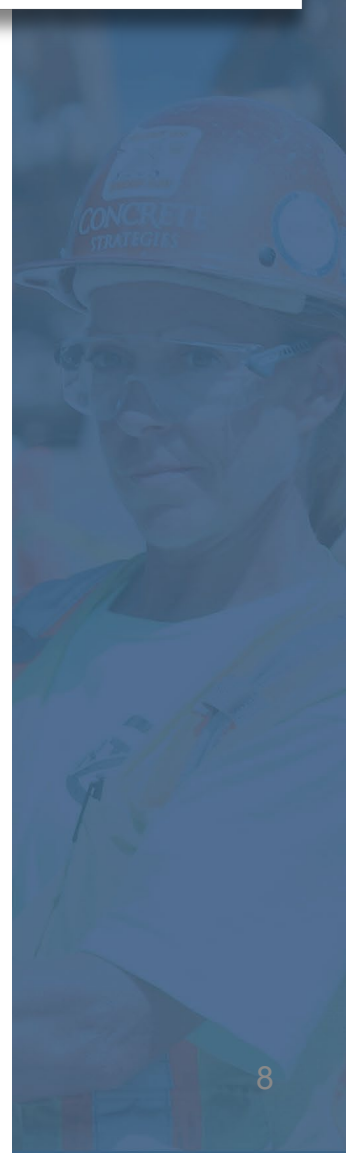


# Project Map



# Project Facts

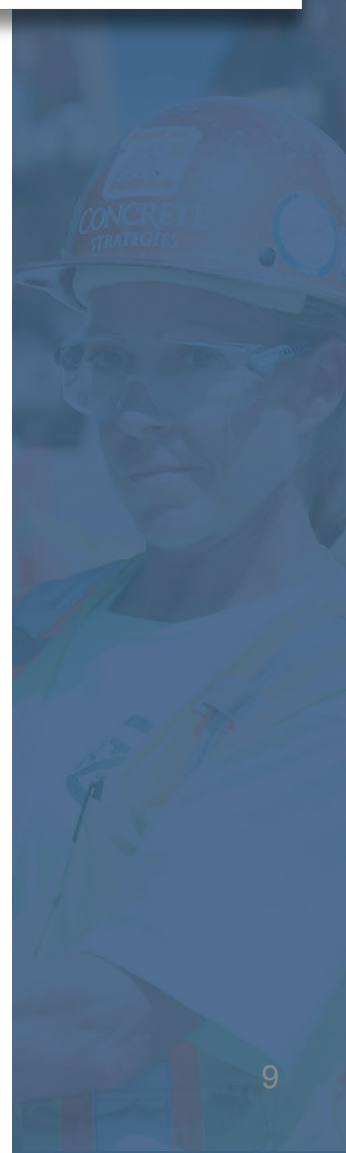
- 4,433 feet of pipe
- Depths of 4 feet to 13 feet
- 12 inch to 54 inch in diameter
- Approximately \$2.5 million investment





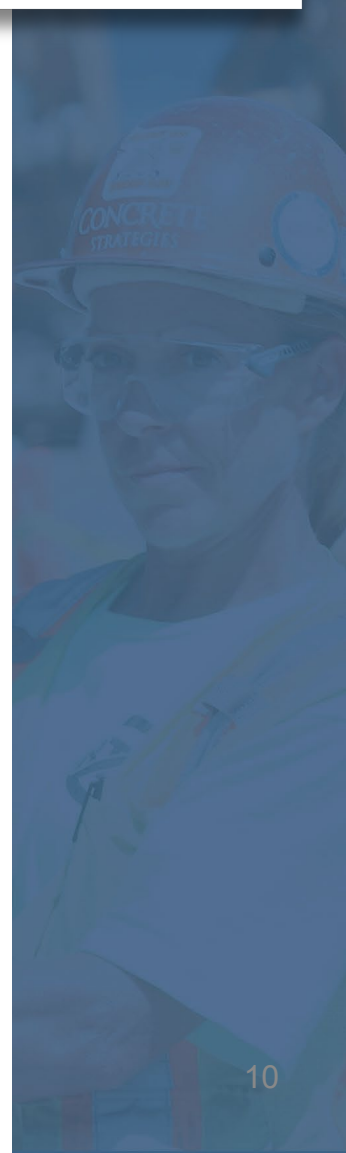
# How it will be built

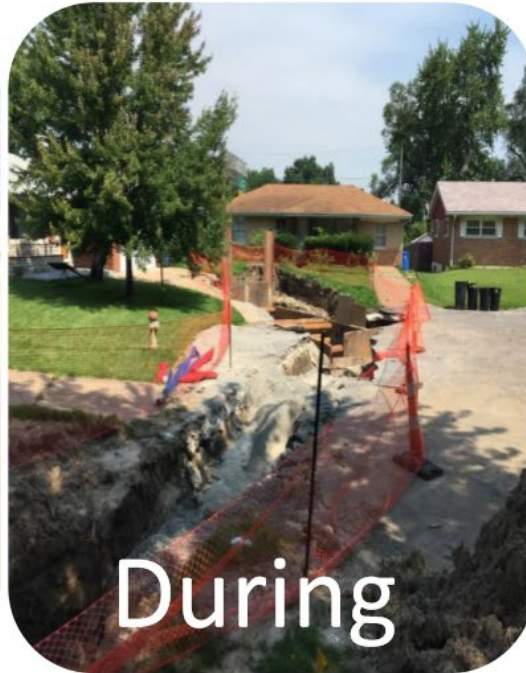
- Pipes will be installed using open cut trenches.
- Equipment may include excavator, mini-excavator, dump trucks, skid steer, woodchipper, paving machine, tractor trailer, and bucket truck.



# What can residents expect?

- Easements for access to private property
- Potential for short-term road closures/traffic impact during working hours
- Access to houses may be disrupted temporarily (necessary to construct driveway crossings)





# Tentative Construction Schedule

- Design Completion: **May 2021**
- Easement Acquisition: **May 2022**
- Estimated start date: **Winter 2022/23**
- Estimated duration: **18 months**



# FAQs

- Will construction be on my property?
  - The attached map shows the approximate project limits.
- Will the project address issues associated with the sanitary sewer (i.e. basement backups)?
  - No, the project is not related to the sanitary sewer system. This project is to install new storm sewers to alleviate overland flooding and ponding in the project area.
- How will vegetation/fences/mailboxes/etc. within the construction limits be affected?
  - There may be temporary disturbance of these features. MSD's contractor will restore fences and mailboxes as necessary and replace disturbed vegetation with new sod.

# Questions?

Jennifer Gerwitz, PE

314-335-2036

jgerwitz@stlmsd.com

Josiah Holst, PE

636-812-4207

jholst@hrgreen.com

[MSDprojectclear.org/Larimore](http://MSDprojectclear.org/Larimore)

