

# White and Rosalie I/I Reduction and Bridgeport Sewer Separation Design (11212) – Virtual Town Hall

August 18, 2020



## Today's Roadmap

- Technology Overview and Ground Rules
- Overview of MSDPC
- Project Overview and Specifics
- FAQs
- Q&A

## Notes on our Virtual Town Hall Platform

- Participants are in listen-and-view mode
- There are several ways to engage
  - Type your question using Q/A icon at the bottom of your screen at any time (even before the Q/A portion has begun)
  - Everyone can read all questions posed and you can “Upvote” questions you want answered (by clicking the thumbs-up icon)

# MSD Project Clear (MSDPC) Overview & Details

- Government Utility
  - State Constitution
  - Voter Approved Charter in 1954
  - 6 Member Board of Trustees (3 City & 3 County)
- Two utilities: Wastewater & Stormwater
- 520 square mile service area
  - All of St. Louis City
  - 87% of St. Louis County
- ~1,300,000 customers
- 88 municipalities served
- 7 Treatment Plants
- 350+ million gallons per day of wastewater treated
- 4,700+ miles of wastewater sewers
- 1,800+ miles of combined sewers
- 3,000+ miles of stormwater sewers
- 4th largest sewer system in the United States (as measured by miles of sewers handling wastewater)

# White and Rosalie I/I Reduction and Bridgeport Sewer Separation Design (11212)

Erin Jearls

HDR Design Engineer

[erin.jearls@hdrinc.com](mailto:erin.jearls@hdrinc.com)

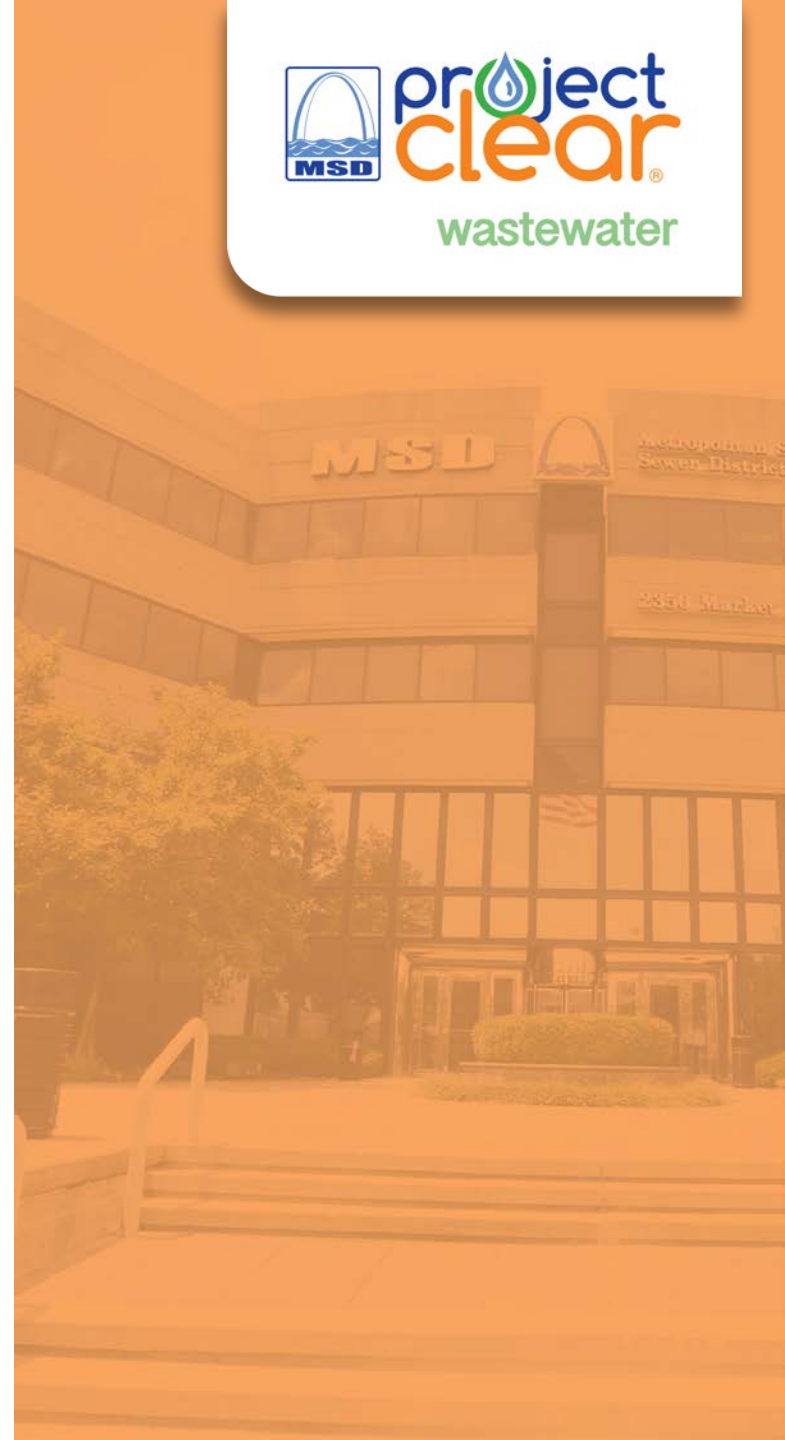
314-425-8330

Darrick White

MSD Project Manager

[ddwhite@stlmsd.com](mailto:ddwhite@stlmsd.com)

314-335-2047



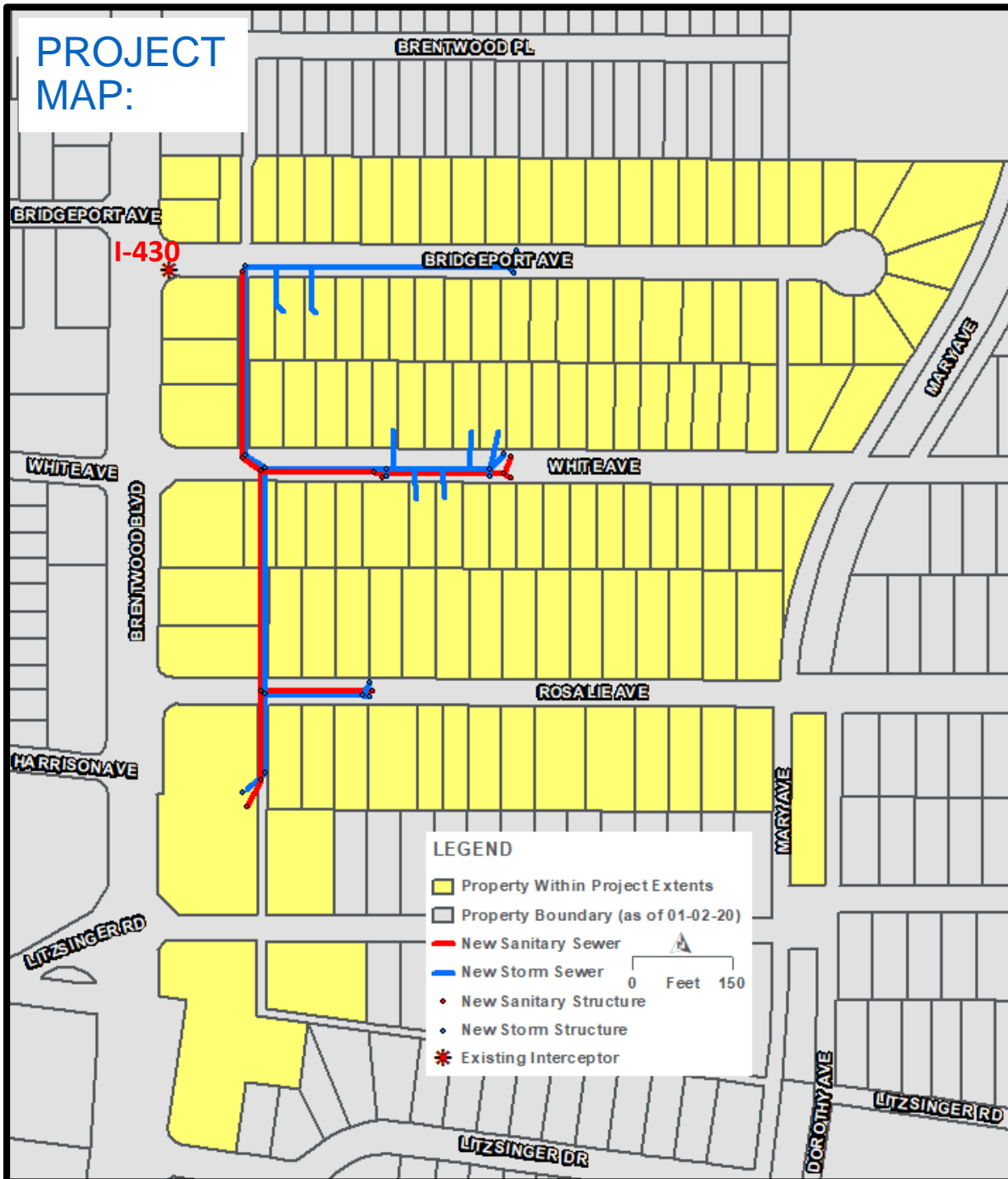
# Project Overview



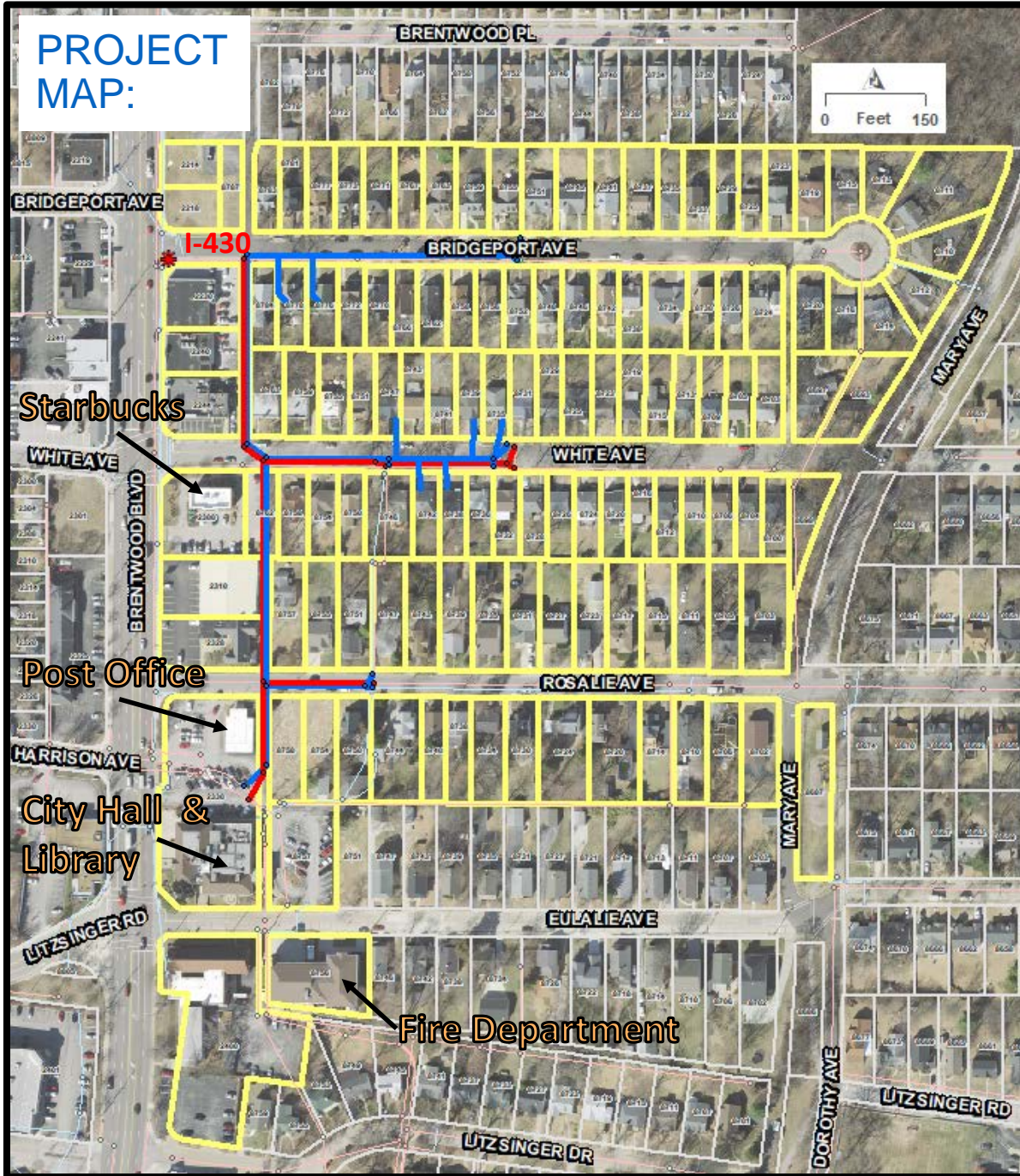
- Origin of Project
  - Combined sewer system
  - Undersized sewer pipes
  - Repeated basement backups reported
  - Street flooding occurs during certain rainfalls
- Project Goal
  - Reduce basement backups & overcharged sewers
  - Separate pipes for designated flows
  - Remove interceptor I-430
  - Removal of inflow sources from 16 private properties
- Benefits of Project
  - Increased sewer pipe sizes
  - Fewer backups
  - Reduced treatment costs
  - Improved water quality



# PROJECT MAP:



# PROJECT MAP:



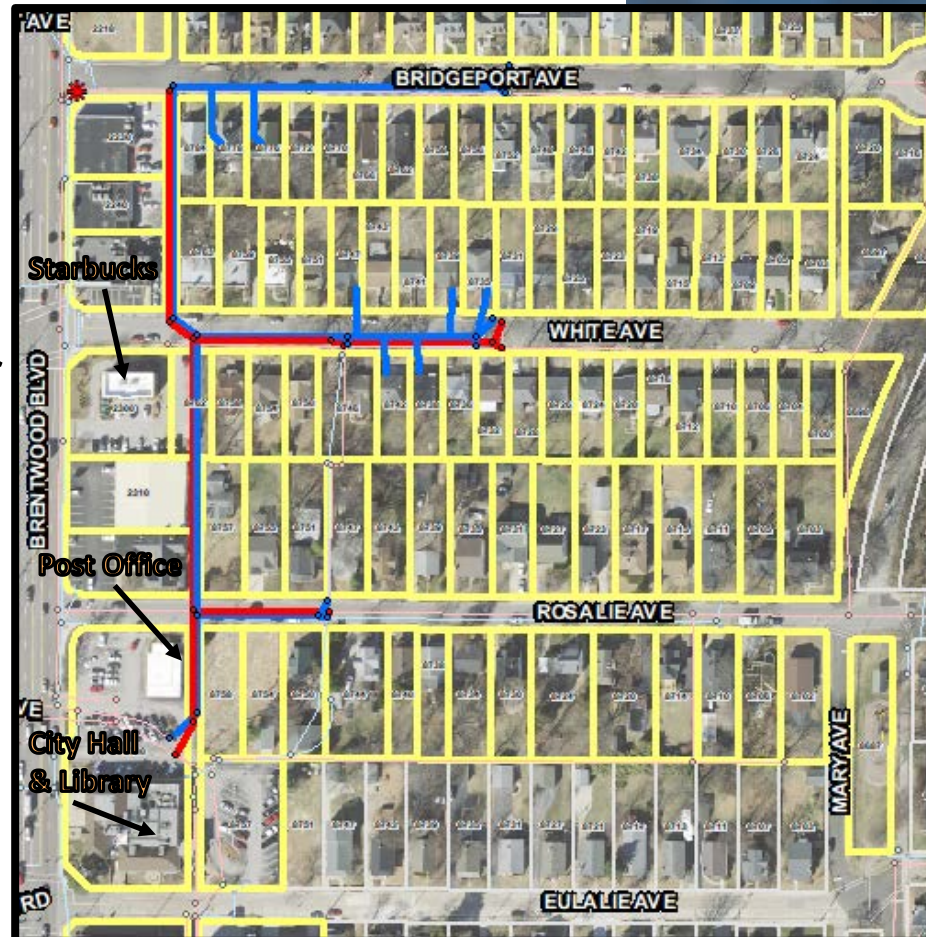
## LEGEND

- Property Within Project Extents
- Property Boundary (as of 01-02-20)
- New Sanitary Sewer
- New Storm Sewer
- Existing Sanitary Sewer
- Existing Storm Sewer
- New Sanitary Structure
- New Storm Structure
- \* Existing Interceptor
- o Existing Sanitary Manhole
- o Existing Combined Manhole
- o Existing Storm Manhole
- o Existing Storm Inlet



# Project Facts

- Increasing existing 8" and 10" diameter sanitary (wastewater) sewer to 12" diameter.
- Increasing existing 12" diameter storm (stormwater) sewer to 18" diameter.
- Construction of new sanitary sewer
  - 1,400 feet of pipe
  - Approximately 7 to 18 feet deep
  - 12" in diameter
- Construction of new storm sewer
  - 1,800 feet of pipe
  - Approximately 4 to 17 feet deep
  - 15" to 30" in diameter
- Elimination of interceptor I-430



# How the Project Will be Built

- Construction Method
  - Open-cut construction mostly
  - Tunnel construction of approximately 315 feet of both storm and sanitary sewer pipe from Rosalie Avenue to White Avenue
  - Two boring pits for tunneling
  
- Equipment
  - Heavy construction equipment to remove necessary street pavement and excavation material (i.e. dump trucks, excavators)
  - Tunnel boring machine for tunneling

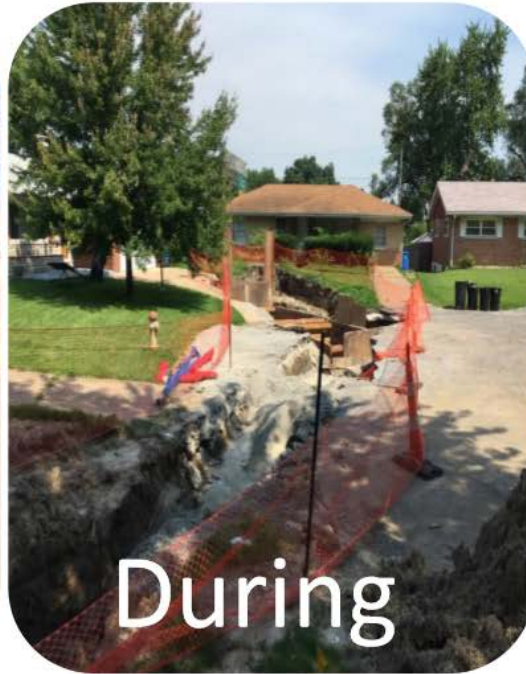


# What Can Residents Expect?

- Easements for access to private property
- Construction noise during normal business hours
- Anticipated road closures/traffic impact
  - Majority of work is on White, Rosalie and Bridgeport Avenues
  - One lane of traffic will be open at all times on White and Bridgeport Avenues
- Temporary access restrictions (residential/commercial)
- Utility disruptions
  - Contractor should provide continuous service
  - If necessary, Contractor will schedule outages with resident that will last at most, no more than six consecutive hours.



# Example of Project Construction



# Tentative Construction Schedule

- Design Completion: May 2019
- Easement Acquisition Completion: Winter 2020
- Estimated Construction Start: Summer 2021\*
- Estimated Project Completion: Summer 2022

\*Anticipated construction start date is subject to change. MSD will notify residents before construction begins.

# FAQs



- **Q1: Will residents have access issues to their homes?**
- A1: Residents may experience access issues to their homes, but the Contractor will work with the homeowner to minimize issues.
- **Q2: Will construction take place on residential property?**
- A2: If construction is expected to take place on your property, you will be contacted to obtain the necessary easements by October 2020.
- **Q3: Will there be any access issues to the Starbucks on Brentwood Boulevard and White Avenue?**
- A3: Access to and from Starbucks from Brentwood Boulevard shall remain unchanged by construction. At times during construction, access to and from the Starbucks property to White Avenue will need to be restricted. Efforts will be made to minimize these access restrictions.
- **Q4: Will trees be removed as a part of this project?**
- A4: Trees may need to be removed to construct parts of this project. Property owners with trees that will need to be removed and are not located in already existing easements will be compensated for the removal through the easement acquisition process.

# Questions?

Darrick White

MSD Project Manager

314-335-2047

ddwhite@stlmsd.com

Erin Jearls

HDR Design Engineer

314-425-8330

erin.jearls@hdrinc.com

[MSDprojectclear.org/White-Rosalie](http://MSDprojectclear.org/White-Rosalie)

