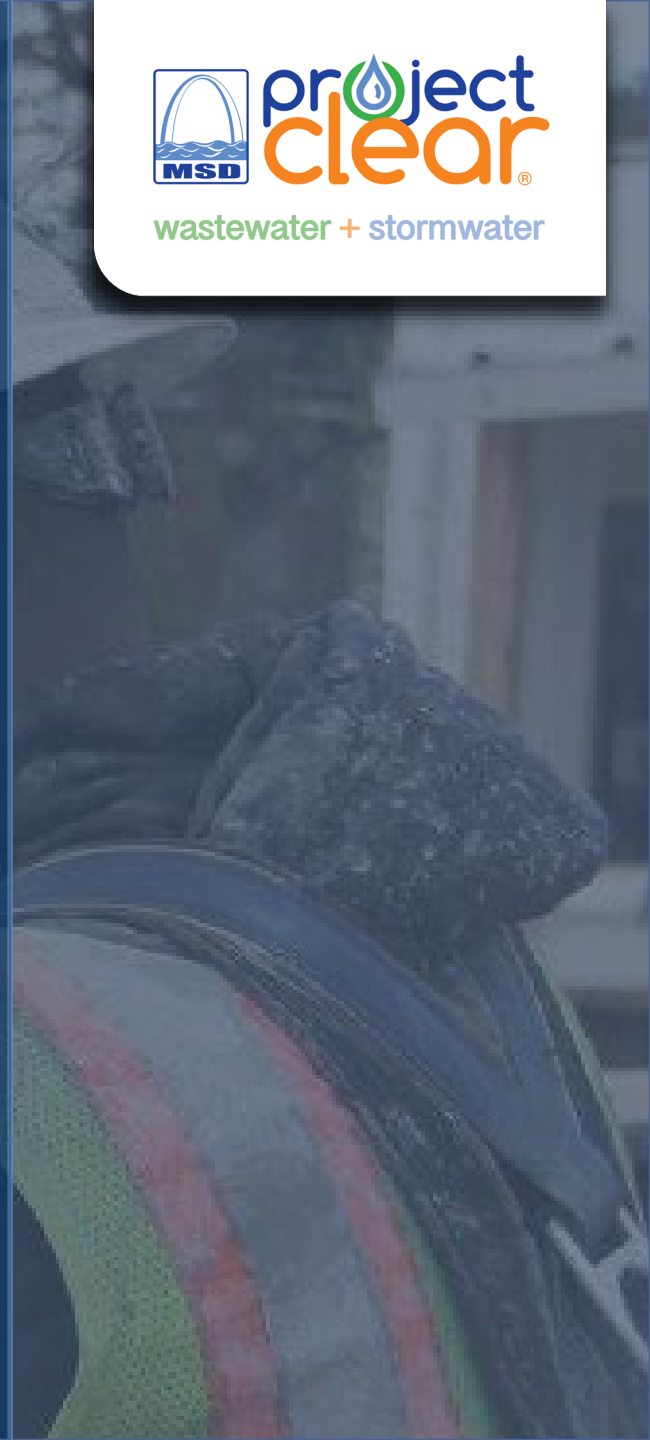




Lower Meramec Wastewater Treatment Facility Expansion Phase II (12255)

February 17, 2022



Today's Roadmap

- Technology Overview and Ground Rules
- Overview of MSDPC
- Project Overview and Specifics
- FAQs
- Q&A

Notes on our Virtual Town Hall Platform

- Participants are in listen-and-view mode
- There are several ways to engage
 - Type your question using Q/A icon at the bottom of your screen at any time (even before the Q/A portion has begun)
 - Everyone can read all questions posed and you can “Upvote” questions you want answered

MSD Project Clear (MSDPC) Overview & Details

- Government Utility
 - State Constitution
 - Voter Approved Charter in 1954
 - 6 Member Board of Trustees (3 City & 3 County)
- Two utilities: Wastewater & Stormwater
- 520 square mile service area
 - All of St. Louis City
 - 87% of St. Louis County
- ~1,300,000 customers
- 88 municipalities served
- 7 Treatment Plants
- 350+ million gallons per day of wastewater treated
- 4,700+ miles of wastewater sewers
- 1,800+ miles of combined sewers
- 3,000+ miles of stormwater sewers
- 4th largest sewer system in the United States (as measured by miles of sewers handling wastewater)



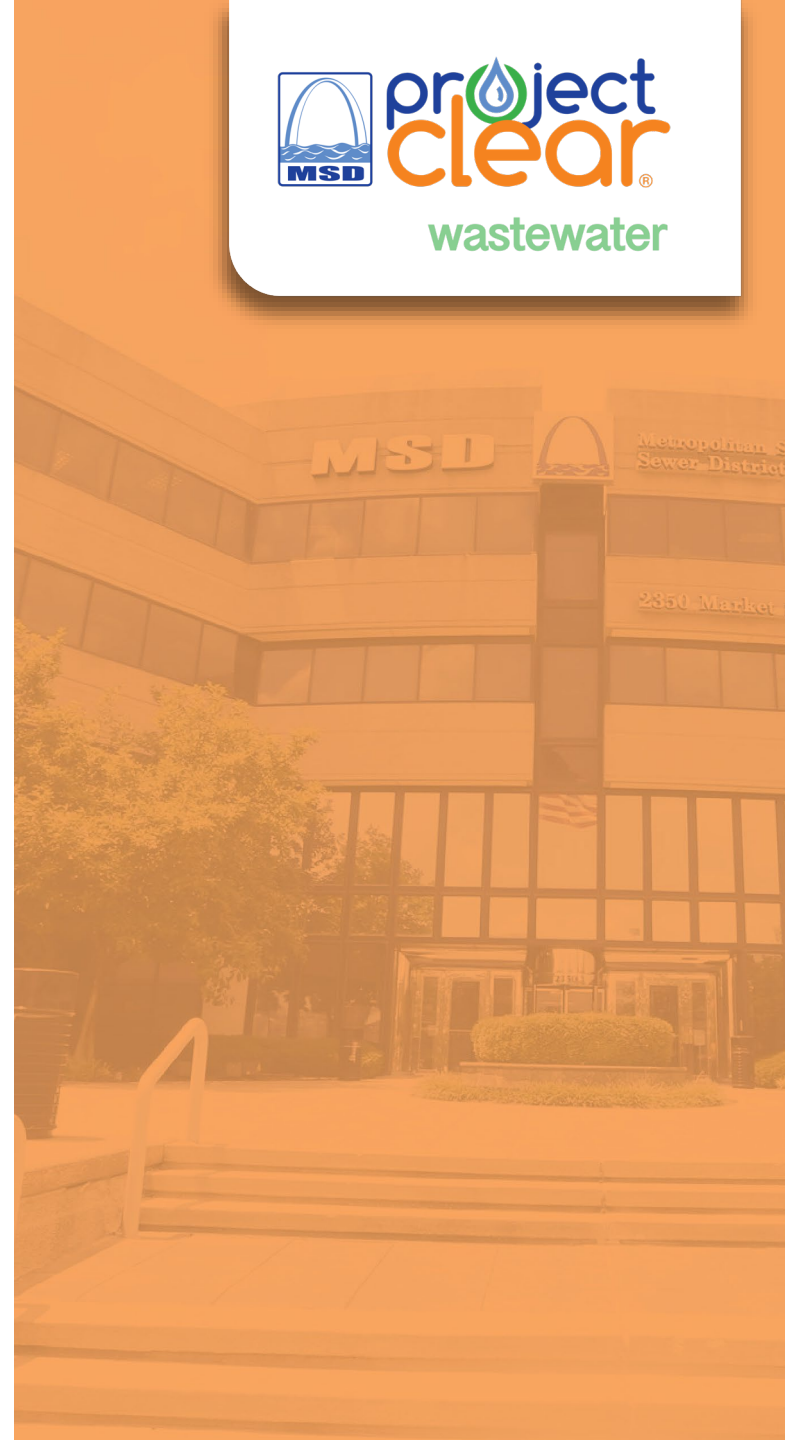
Lower Meramec Wastewater Treatment Facility Expansion Phase II (12255)

Project Manager:

Jerry Jung

Jjung@stlmsd.com

314-768-6226





Project Overview

Origin of Project:

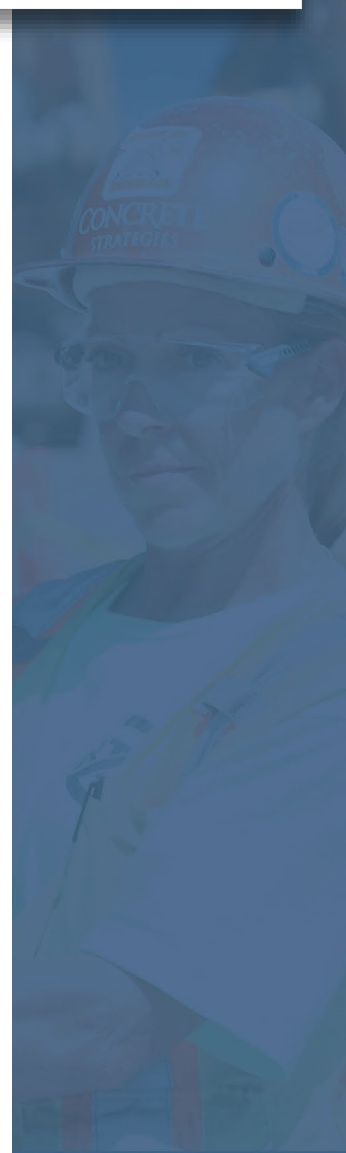
- Long term planning efforts
- Compliance with legal requirements
- \$117 million investment

Project Goal

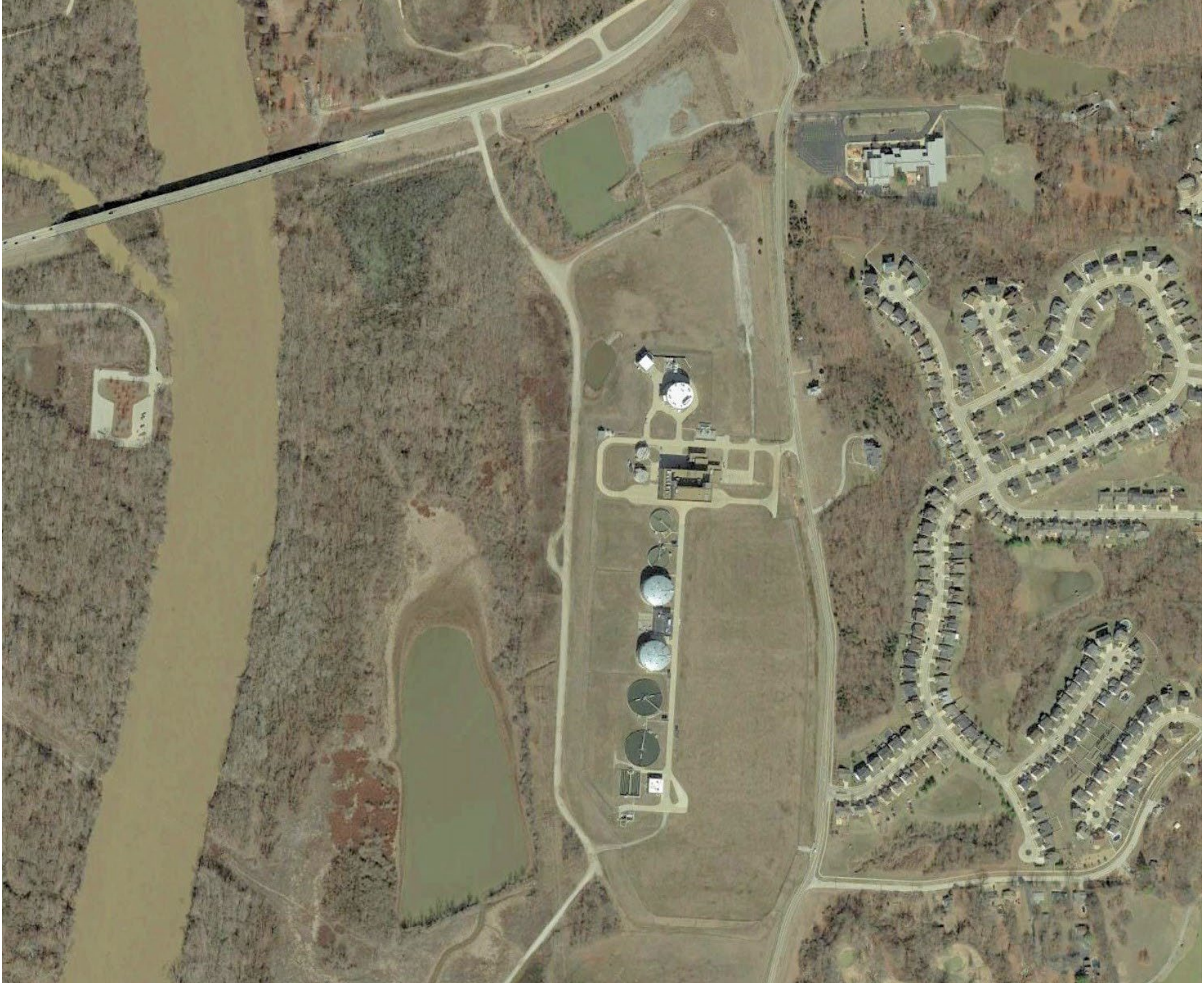
- Expand wastewater treatment capacity
- Position region for the future

Benefits

- Improved treatment and capacity to protect public health

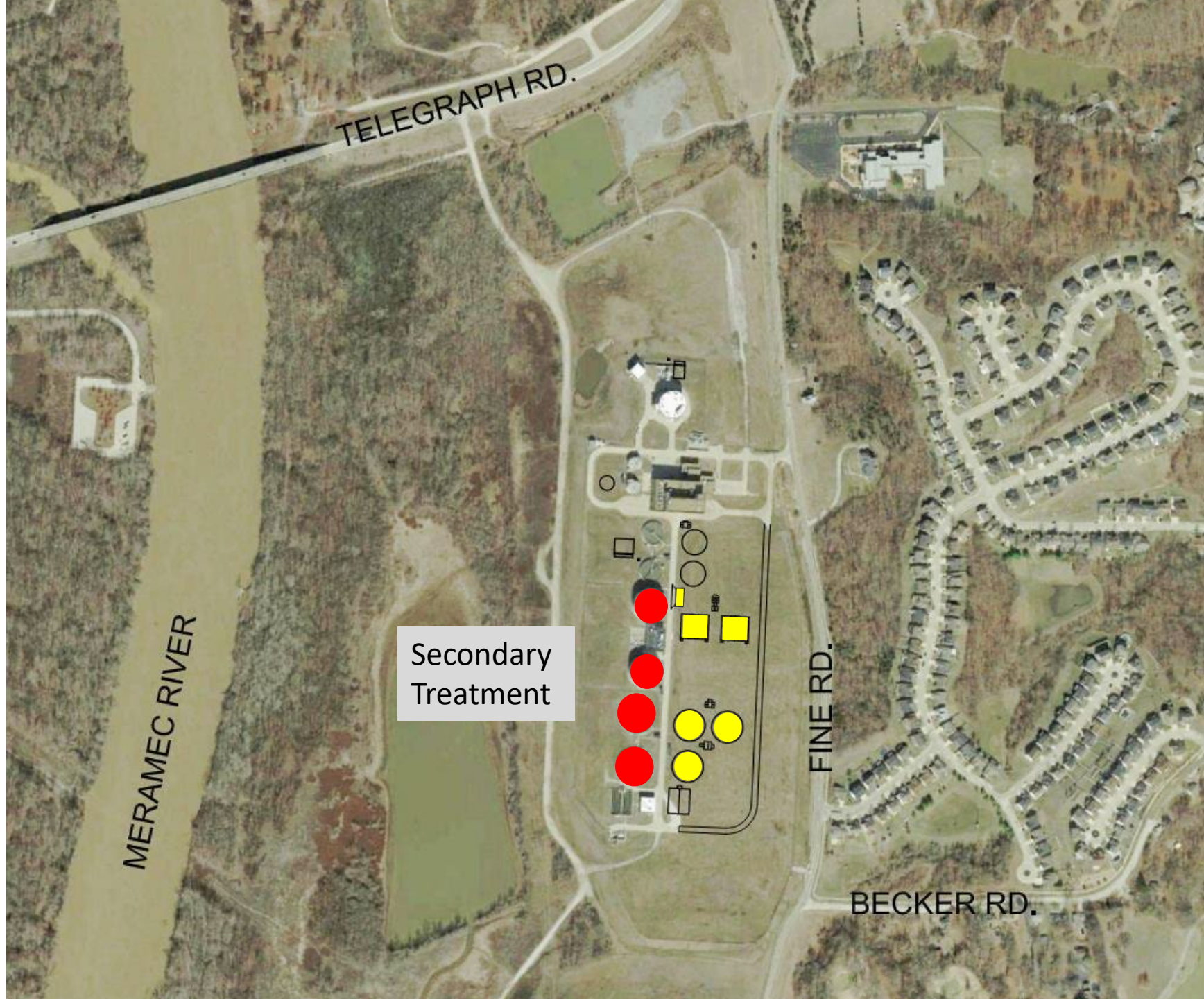


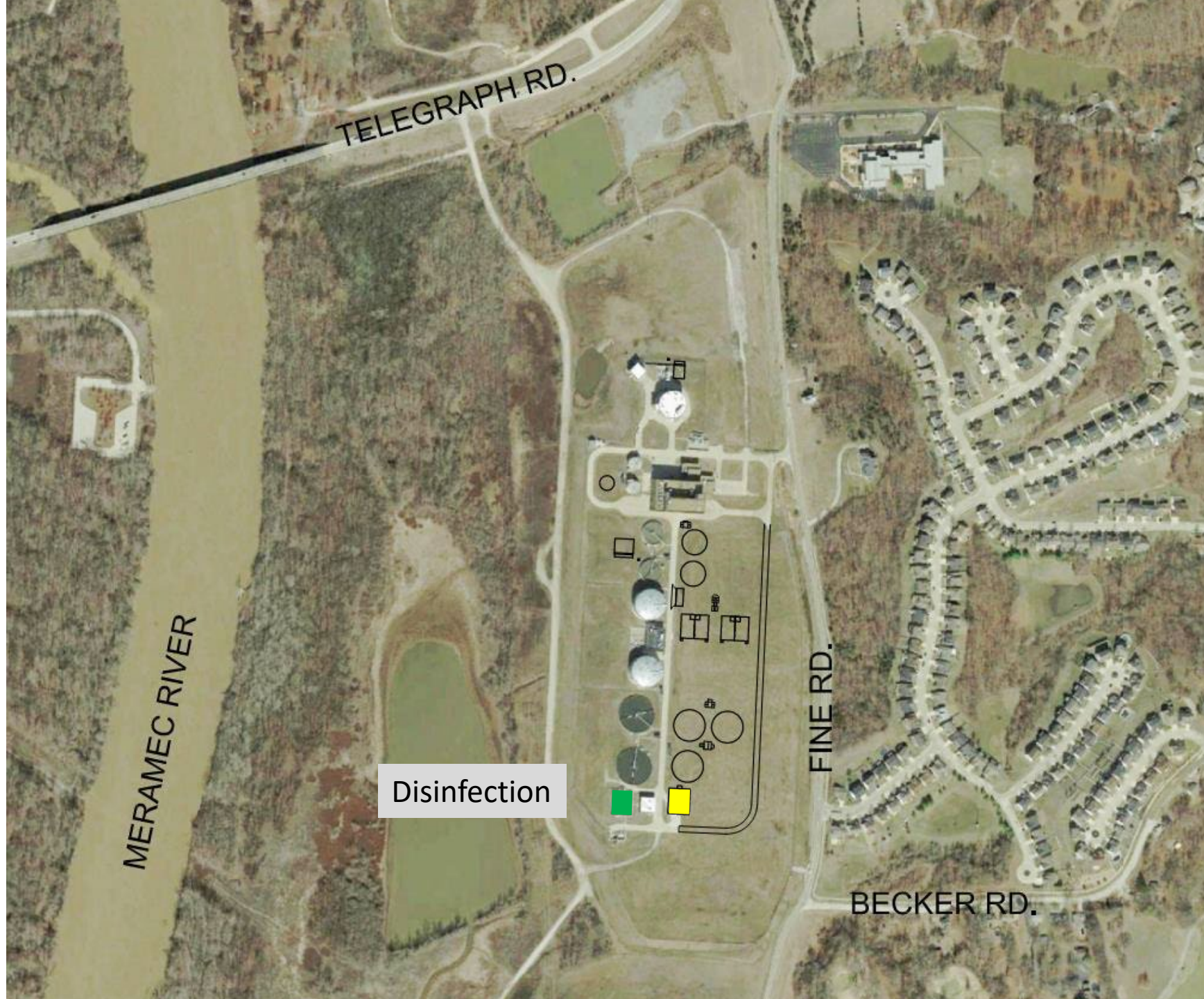










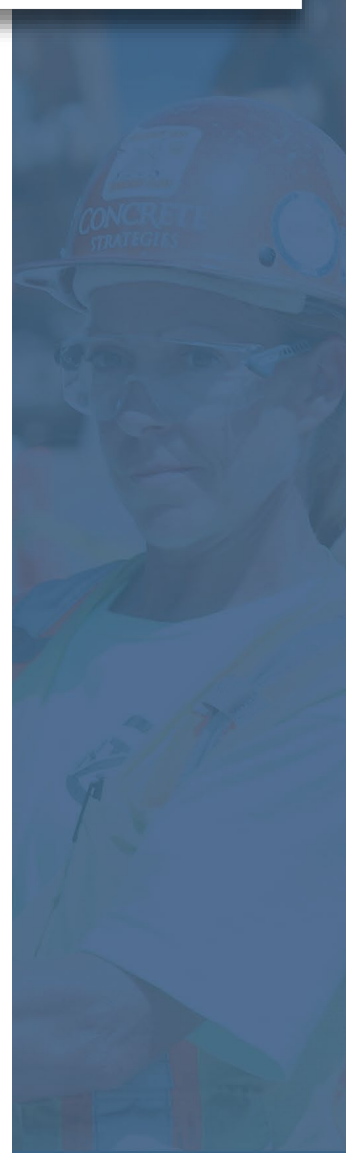






Project Facts

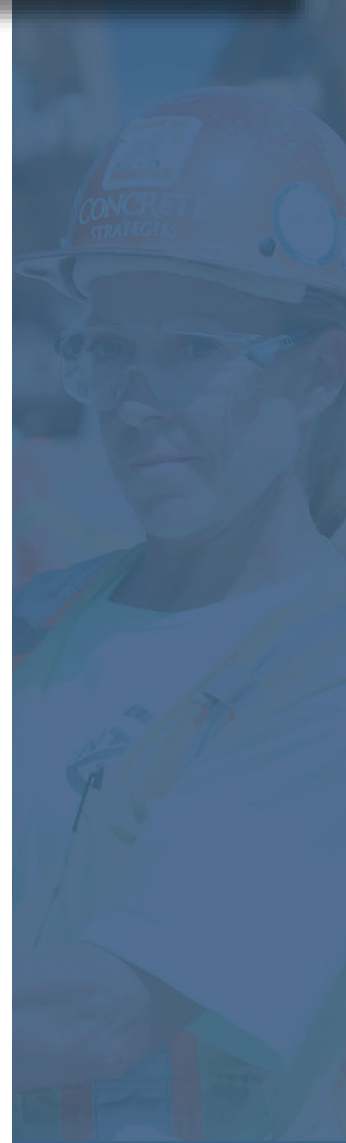
- Increase design average day flow from 15 to 16 million gallons (MGD)
- Increase design peak hour flow from 60 to 100 MGD
- Replacing trickling filter treatment with higher quality aeration system
- Includes repair/replacement of some existing equipment





How will it be built?

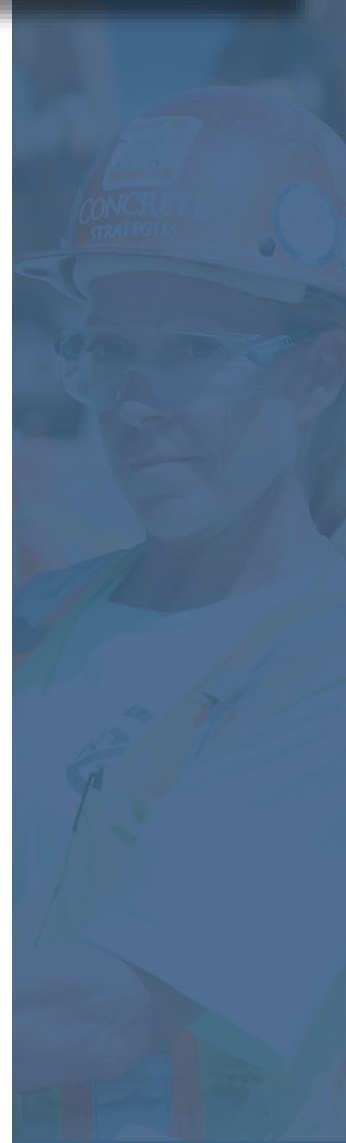
- Surface work
- Below grade work
- New treatment system built before demolition of trickling filters





What can residents expect?

- Typical construction noise during the day; loudest during pile driving
- Minimal disruption to local traffic
- Construction entrance on Telegraph, not Fine Road
- Other construction nearby, unrelated
 - McBride development
 - Ameren decommissioning project
 - Rogers School





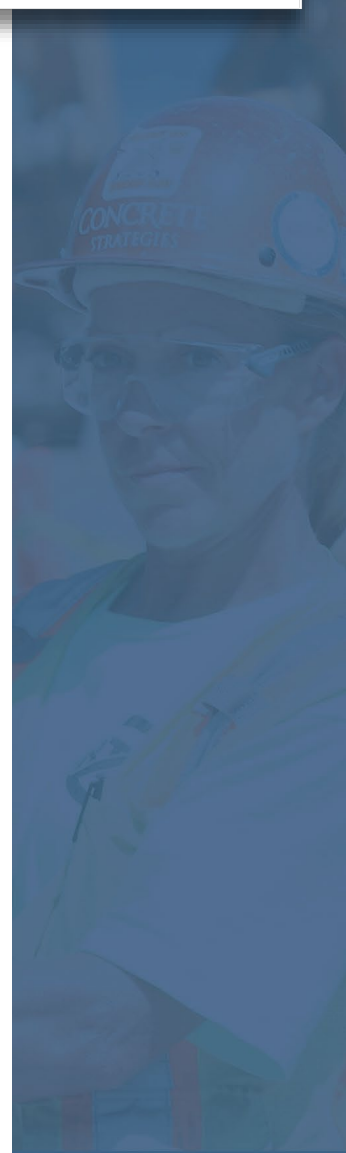
Tentative Construction Schedule



Estimated contractor selection:
2022 March

Estimated construction duration:
2022 Summer – 2025 Spring

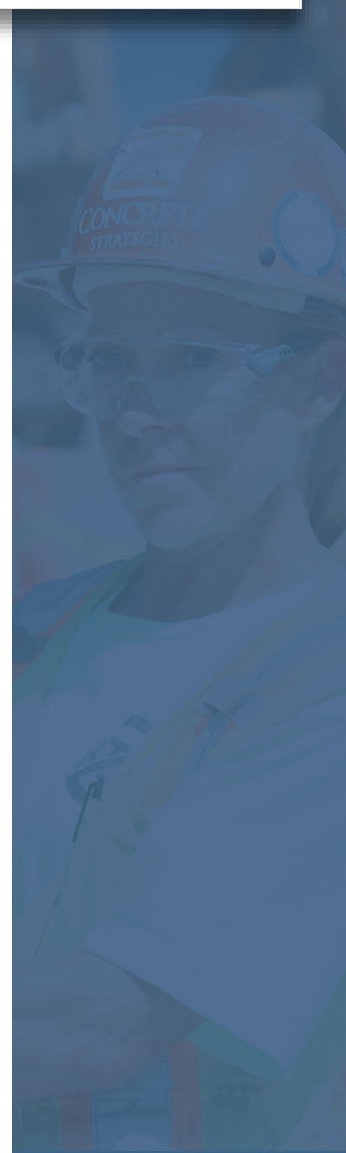
*Anticipated construction start date is subject to change.
MSD will notify residents before beginning construction.*





FAQs

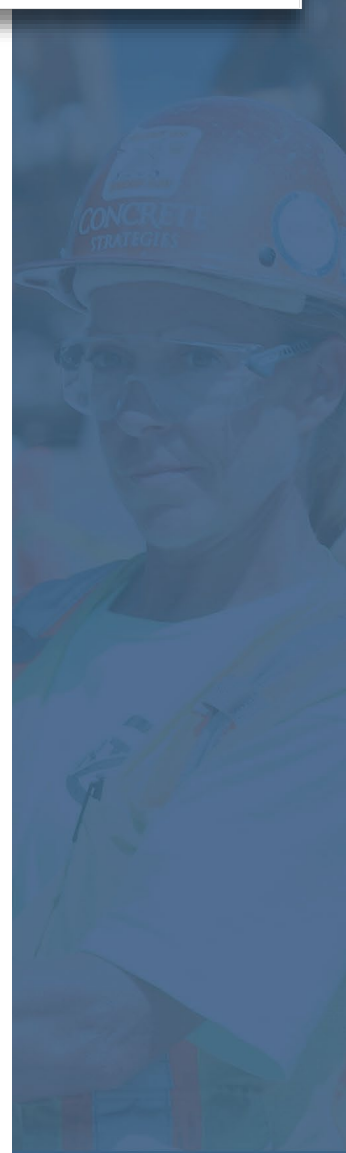
1. Easements needed? No, all work is done on land owned by MSD
2. Construction traffic? Fine Road only used by contractors during flood events
3. Noise? St. Louis County permit rules apply
4. Road status? Ongoing cleaning required of contractors





FAQs

5. Odor? Current odor controls will be updated to match best practices and will have a lower profile
6. Timing? First planned in the late 1970s; construction on the property will be visible this year
7. Funding? Budget is approved; funding comes from current rates
8. Benefits? Improved treatment





Questions?

Jerry Jung

MSD Project Clear

Jjung@Stlmsd.com

(314) 768-6226

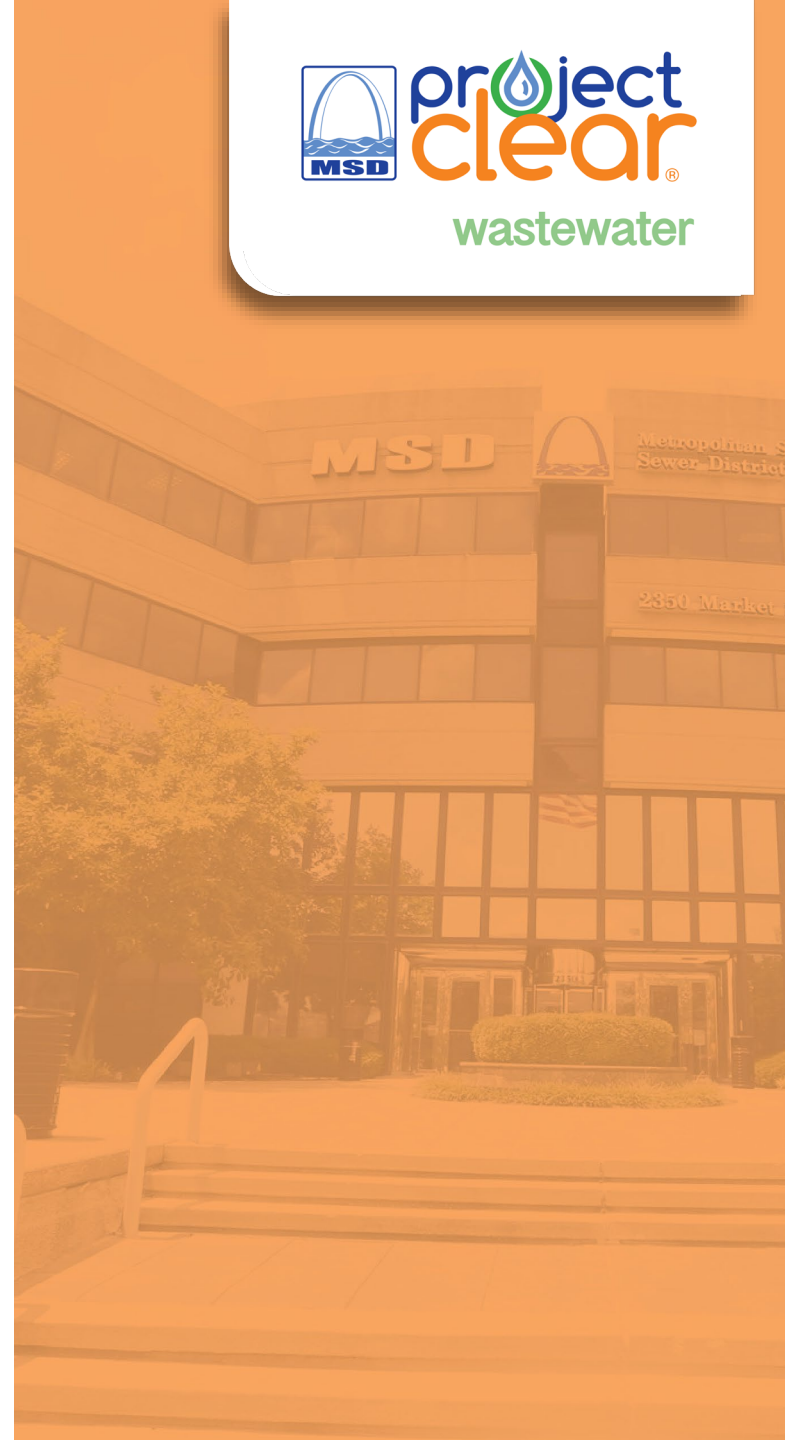
Doug Hickey

HDR Engineering, Inc.

Doug.Hickey@hdrinc.com

(314) 425-8318

msdprojectclear.org/LowerMeramecFacility





Project Overview

Ongoing Lower Meramec Tunnel Phase II Project

