

FY 2023 Capital Improvement Program - Proposed Construction Services

Rich Unverferth, P.E.

Director of Engineering

April 20, 2022

Technology Overview

- Participants are in listen-and-view mode
- There are several ways to engage
 - Type your question using Q/A icon at the bottom of your screen at any time (even before the Q/A portion has begun)
 - Everyone can read all questions posed and you can “Upvote” questions you want answered
- Ground Rules: General questions only during live Q&A
 - Specific project questions should be directed to Allen Muehlher, AFMUEH@stlmsd.com

Today's Agenda

- Introductions and About MSD
- Proposed Program – Summary
- Proposed Program – Ongoing Construction
- Proposed Program – Procurements Needed
- Proposed Program – Work Order Repairs
- Proposed Program – Contingency Projects
- Proposed Program – Looking Ahead
- Prequalification Process
- Small Contractor Program
- Bid Schedule and Plan Room
- Prevailing Wage Program
- Construction Management Division Staffing
- Diversity
- Executive Director's Update
- Questions and Answers

MSD Overview & Details

- Government Utility
 - State Constitution
 - Voter Approved Charter
 - 6 Member Board of Trustees (3 City & 3 County)
- Two utilities: Wastewater & Stormwater
- 520 square mile service area
 - All of St. Louis City
 - 87% of St. Louis County
- ~1,300,000 customers
- 88 municipalities served
- 7 Treatment Plants
- 350+ million gallons per day of wastewater treated
- 4,500+ miles of sanitary sewers
- 1,400+ miles of combined sewers
- 3,000+ miles of stormwater sewers
- 4th largest sewer system in the United States (as measured by miles of sewers handling wastewater)

Proposed Program – FY2023

- Summary



Proposed Program – FY2023

- Summary

CAPITAL IMPROVEMENT AND REPLACEMENT PROGRAM **SUMMARY - FY23**

<u>TYPE OF PROJECT</u>	<u>NUMBER OF PROJECTS</u>	<u>PROJECT COST</u>
Wastewater Engineering	52	\$53,515,000
Wastewater Construction	50	\$330,576,000
Stormwater Engineering	9	\$6,850,000
Stormwater Construction	19	\$16,786,244
<i>TOTAL:</i>	130	\$407,727,244
Wastewater Continued	3	\$9,100,000
Stormwater Continued	1	\$200,000
<i>TOTAL:</i>	4	\$9,300,000
<i>GRAND TOTAL:</i>	134	\$417,027,244

Proposed Program – FY2023

- Ongoing Construction, Supplemental Funding

Project Name	Additional Appropriation:
BADEN CITYSHED MITIGATION BASINS (CALVARY, FREDERICK, PARTRIDGE AND TILLIE) - SEPARATION SEWERS	2,400,000
CAULKS CREEK A PUMP STATION (P-750) IMPROVEMENTS	3,200,000
CAULKS CREEK FORCEMAIN (RIVER VALLEY RD TO L-52)	2,500,000
HARLEM - BADEN RELIEF PHASE IV (HEBERT) (GOODFELLOW TO HAMILTON)	1,279,000
LOWER MERAMEC RIVER SYSTEM IMPROVEMENTS - BAUMGARTNER TO FENTON WWTF TUNNEL	48,000,000
LOWER MERAMEC WWTF EXPANSION PHASE II	30,000,000
MC-02 WATSON TO EDGAR RD SANITARY RELIEF (SKME-580A)	5,954,000
PRICE TO PIONEER SANITARY RELIEF	2,507,000
	95,840,000

Proposed Program – FY2023

- Ongoing Construction



Proposed Program – FY2023

- Ongoing Construction



Proposed Program – FY2023

- Ongoing Construction



Proposed Program – FY2023

- Ongoing Construction



Proposed Program – FY2023

- Ongoing Construction



Proposed Program – FY2023

- Ongoing Construction



Proposed Program – FY2023

- Ongoing Construction



Proposed Program – FY2023

- Ongoing Construction



Proposed Program – FY2023

- Procurements Needed

Construction Category	# Bid Opportunities	FY23 Construction Budget
CIPP	9	29,518,000
Facilities	6	132,900,000
Pump Stations	6	8,670,000
Sewers	26	49,586,000
PIR	2	1,402,000
Tunnels	0	0
Bank Stabilization	<u>0</u>	<u>0</u>
Total	49	222,076,000

Proposed Program – FY2023



- Procurements Needed (CIPP)

Project Name	Description	Budget
NORTH FEE FEE CREEK PUBLIC I/I REDUCTION	REHABILITATE 90,000 FEET OF THE PUBLIC SEWER SYSTEM USING THE CURED IN PLACE PIPE METHOD.	6,000,000
BISSELL - COLDWATER - MISSOURI - MERAMEC PUBLIC I/I REDUCTION (2023) CONTRACT E	REHABILITATE 47,900 FEET OF THE PUBLIC SEWER SYSTEM USING THE CURED IN PLACE PIPE METHOD.	4,251,000
BISSELL - COLDWATER - MISSOURI - MERAMEC PUBLIC I/I REDUCTION (2023) CONTRACT D	REHABILITATE 54,900 FEET OF THE PUBLIC SEWER SYSTEM USING THE CURED IN PLACE PIPE METHOD.	3,594,000
STORMWATER INFRASTRUCTURE REPAIRS (REHABILITATION) (2023)	CONSTRUCT CURED-IN-PLACE PIPE INSTALLATION FOR STORMWATER SYSTEM REHABILITATION AND REPAIR, AS NEEDS ARE IDENTIFIED BY SEWER CLEANING AND INSPECTION EFFORTS.	3,000,000
BISSELL - COLDWATER - MISSOURI - MERAMEC PUBLIC I/I REDUCTION (2023) CONTRACT C	REHABILITATE 41,900 FEET OF THE PUBLIC SEWER SYSTEM USING THE CURED IN PLACE PIPE METHOD.	2,663,000
FF-15 AND FF-16 SANITARY RELIEF PHASE II REHABILITATION	REHABILITATE 4,500 FEET OF 18-INCH TO 30-INCH DIAMETER SEWER. REHABILITATE 10 MANHOLES.	2,650,000
INFRASTRUCTURE REPAIRS (REHABILITATION) (2023) CONTRACT A	CONSTRUCT CURED-IN-PLACE PIPE INSTALLATION FOR SYSTEM REHABILITATION AND REPAIR, AS NEEDS ARE IDENTIFIED BY SEWER CLEANING AND INSPECTION EFFORTS.	2,500,000
INFRASTRUCTURE REPAIRS (REHABILITATION) (2023) CONTRACT B	CONSTRUCT CURED-IN-PLACE PIPE INSTALLATION FOR SYSTEM REHABILITATION AND REPAIR, AS NEEDS ARE IDENTIFIED BY SEWER CLEANING AND INSPECTION EFFORTS.	2,500,000
BISSELL - COLDWATER - MISSOURI - MERAMEC PUBLIC I/I REDUCTION (2023) CONTRACT F	REHABILITATION OF THE PUBLIC SEWER SYSTEM USING THE CURED IN PLACE PIPE METHOD, TO REDUCE PUBLIC I/I.	2,360,000

Proposed Program – FY2023

- Procurements Needed (Facilities)

Project Name	Description	Budget
BISSELL & LEMAY WWTF FLUIDIZED BED INCINERATORS	CONSTRUCT FLUIDIZED BED INCINERATORS AT THE BISSELL AND LEMAY WASTEWATER TREATMENT FACILITIES, TO INCLUDE REDUNDANT SLUDGE ACCEPTANCE SYSTEMS AND SOLIDS HANDLING SYSTEM IMPROVEMENTS.	101,000,000
BISSELL POINT WWTF FINE SCREEN, CONCRETE AND GATE IMPROVEMENTS	INSTALL FINE SCREENS TO REPLACE FAILING COMMINUTORS, REPAIR SLUICE GATES AND COMPONENTS, AND CONCRETE.	18,000,000
COLDWATER CREEK WWTF REPAIRS AND IMPROVEMENTS (2023)	AERATION CONTROL BUILDING IMPROVEMENTS, INCLUDING REPLACEMENT OF AERATION CONTROL PIPING AND INSTRUMENTATION, AND INSTALLATION OF A PARALLEL BOSKER SWITCH TRACK SYSTEM AND NEW BOSKER UNITS.	5,000,000
HARLEM CITYSHED MITIGATION BASINS (ASHLAND AND ESSEX)	CONSTRUCT 2 STORMWATER DETENTION BASINS, AND 2 RAIN GARDENS.	4,000,000
LEMAY WWTF REPAIRS AND IMPROVEMENTS (2023) (GRIT TANKS AND SECONDARY CLARIFIER DUCT BANK)	CONSTRUCT CONCRETE REPAIRS, REPLACE SECONDARY CLARIFIER DUCT BANK, AND RENEW 4 GRIT TANKS.	4,000,000
LEMAY WWTF AERATION BLOWER AND POWER DISTRIBUTION IMPROVEMENTS	REPLACE AERATION BLOWER MOTORS, DRIVES, AND CONTROLS, AND MAKE IMPROVEMENTS TO LEMAY SUBSTATION RELAYS AND POWER DISTRIBUTION SYSTEM.	900,000

Proposed Program – FY2023

- Procurements Needed (Pump Stations)

Project Name	Description	Budget
PUMP STATION MANLIFT REPLACEMENT	REPLACE MANLIFTS IN VARIOUS PUMP STATIONS.	4,000,000
EARTH CITY UPS PUMP STATION (P-702) REPLACEMENT PHASE II	CONSTRUCT REPLACEMENT OF PUMP STATION P-702, 266 FEET OF 8-INCH FORCE MAIN, AND 128 FEET OF 8-INCH TO 72-INCH SANITARY SEWER.	1,800,000
LEMAY 1 PUMP STATION (P-301) COOLING TOWER REPLACEMENT	REMOVE AND REPLACE EXISTING COOLING TOWERS, PIPING, AND VALVES	1,130,000
ROBYN HILLS NUMBER 1 PUMP STATION (P-417) REPLACEMENT	REPLACE PUMP STATION P-417.	780,000
PUMP STATION FALL PROTECTION UPGRADES - PHASE I	CONSTRUCT INTEGRATED FALL PROTECTION GRATING AND HATCH MODIFICATIONS WHERE NECESSARY OVER EXISTING WET WELLS, AND INSTALL SAFETY POST ANCHOR PLATES.	500,000
FABICK PUMP STATION (P-444) IMPROVEMENTS (SKME-404E)	CONSTRUCT MODIFICATIONS TO THE FABICK PUMP STATION TO MEET CURRENT STANDARDS.	460,000

Proposed Program – FY2023

- Procurements Needed (Sewers)

Project Name	Description	Budget
BLACK CREEK - HADDINGTON COURT RELIEF SEWERS	CONSTRUCT 7,955 FEET OF 8-INCH TO 42-INCH SANITARY SEWER, AND ELIMINATE CONSTRUCTED SSO OUTFALLS BP-013, BP-017, AND BP-151.	13,000,000
HARLEM BADEN RELIEF PHASE IV (HEBERT) - HAMILTON TO DARVER TRUNK SEWER	CONSTRUCT 3,660 FEET OF 12-INCH TO 108-INCH STORM AND COMBINED SEWERS, AND 900 FEET OF PIPE IN TUNNEL.	6,000,000
FLORISSANT/DUNN SANITARY RELIEF (ST. ANTHONY LN TO I-270)	CONSTRUCT 6,170 FEET OF 8-INCH TO 24-INCH SANITARY SEWER.	4,910,000
JEFFERSON BARRACKS TUNNEL CONSOLIDATION SEWERS	CONSTRUCT 5,700 FEET OF 8-INCH TO 36-INCH SANITARY SEWER, AND REHABILITATE 2,800 FEET OF 30-INCH TO 36-INCH SANITARY SEWER, TO CONVEY FLOW TO THE NEW JEFFERSON BARRACKS TUNNEL.	3,400,000
INFRASTRUCTURE REPAIRS (REHABILITATION) (2023) CONTRACT C	CONSTRUCT GEOPOLYMER LINING REHABILITATION AT 6 MISSISSIPPI RIVER OUTFALLS.	3,310,000
SAYLESVILLE SANITARY RELIEF (SAYLESVILLE DR TO S GREENTRAILS DR)	CONSTRUCT 3,920 FEET OF 18-INCH SANITARY SEWER, AND 280 LINEAR FEET OF 8 TO 12 FEET HIGH HEAVY STONE REVETMENT BANK STABILIZATION.	2,850,000
LARIMORE STORM SEWER	CONSTRUCT 4,880 FEET OF 12-INCH TO 54-INCH STORM SEWER.	2,600,000

Proposed Program – FY2023

- Procurements Needed (Sewers)

Project Name	Description	Budget
AMBLEWOOD SANITARY RELIEF (WATERFORD DR TO BIRCHBARK DR)	CONSTRUCT 2,400 FEET OF 10-INCH TO 24-INCH SANITARY SEWER.	2,453,000
LAMBERT AIRPORT RESTRICTED ACCESS ASSETS INSPECTION AND REPAIR	PERFORM CCTV INSPECTION, REPAIR AND CIPP REHABILITATION OF 48,000 FEET OF SANITARY SEWER AND 26,000 FEET OF STORM SEWER.	2,000,000
WHITE PLAINS SANITARY RELIEF (SALTBOX DR TO CEDAR CREEK RD)	CONSTRUCT 2,785 FEET OF 8-INCH TO 15-INCH SANITARY SEWER.	1,800,000
WEBSTER GROVES TRUNK E SANITARY REHABILITATION AND I/I REDUCTION PHASE IV	CONSTRUCT 3,200 FEET OF 12-INCH TO 21-INCH STORM SEWER, AND PERFORM PRIVATE I/I REDUCTION AT 40 PROPERTIES.	1,300,000
GLENFIELD SANITARY RELIEF (WATSON WOODS CT TO S LINDBERGH BLVD)	CONSTRUCT 2,400 FEET OF 8-INCH TO 12-INCH SANITARY SEWER.	1,130,000
NEWPORT LANDING PUMP STATION (P-480) ELIMINATION	CONSTRUCT 1,555 FEET OF 8-INCH SANITARY SEWER. DECOMMISSION AND ABANDON EXISTING PUMP STATION P-480 AND ASSOCIATED FORCEMAIN.	626,000
BALLMAN DRIVE 300 BLOCK STORM SEWER	CONSTRUCT 670 FEET OF 18-INCH TO 24-INCH STORM SEWER.	600,000
NORTH NEW FLORISSANT - FOX RUN STORM SEWER	CONSTRUCT 1,230 FEET OF 12-INCH TO 36-INCH STORM SEWER.	600,000

Proposed Program – FY2023

• Procurements Needed (Sewers)

Project Name	Description	Budget
LAMBERT AIRPORT RESTRICTED ACCESS ASSETS INSPECTION AND REPAIR	PERFORM CCTV INSPECTION, REPAIR AND CIPP REHABILITATION OF 48,000 FEET OF SANITARY SEWER AND 26,000 FEET OF STORM SEWER.	500,000
CROSS TIMBERS #705 SANITARY REPLACEMENT	CONSTRUCT 410 FEET OF 8-INCH DIAMETER SANITARY SEWERS, 515 FEET OF 2-INCH DIAMETER FORCE MAIN, AND FOUR (4) GRINDER PUMP SYSTEMS.	425,000
GREENBRIAR #2 PUMP STATION (P-448) ELIMINATION	CONSTRUCT 1,080 FEET OF 8-INCH SANITARY SEWER. DECOMMISSION AND ABANDON EXISTING PUMP STATION P-448 AND ASSOCIATED FORCEMAIN.	425,000
ROXBURGH DR SANITARY RELIEF	CONSTRUCT 530 FEET OF 21-24 INCH SANITARY SEWER, AND ELIMINATE CONSTRUCTED SSO BP-018.	400,000
BEAUCAIRE DRIVE - MARK DRIVE - MONACO DRIVE STORM SEWER	CONSTRUCT 305 FEET OF 12-INCH STORM SEWER.	325,000
DEARBORN DR STORM SEWER	CONSTRUCT 355 FEET OF 15-INCH TO 24-INCH STORM SEWER.	320,000
BANFF SANITARY RELIEF (CAITHNESS RD TO LANARK RD)	CONSTRUCT 342 FEET OF 12-INCH SANITARY SEWER.	167,000
SAYLESVILLE SANITARY RELIEF (SAYLESVILLE DR TO S GREENTRAILS DR)	CONSTRUCT 3,920 FEET OF 18-INCH SANITARY SEWER, AND 280 LINEAR FEET OF 8 TO 12 FEET HIGH HEAVY STONE REVETMENT BANK STABILIZATION.	150,000
LITZSINGER #10412 STORM SEWER IMPROVEMENTS	CONSTRUCT 250 FEET OF 12-INCH TO 18-INCH STORM SEWER.	115,000
LONGFORD DRIVE 1851 STORM SEWER	CONSTRUCT 134 FEET OF 12-INCH TO 24-INCH STORM SEWER.	95,000
MEADOW CREEK LN 508 STORM SEWER	CONSTRUCT 200 FEET OF 12-INCH STORM SEWER.	85,000

Proposed Program – FY2023



- Procurements Needed (PIR)

Project Name	Description	Budget
HATHAWAY DRIVE SANITARY RELIEF	CONSTRUCT 1,042 FEET OF 10-INCH SANITARY SEWER AND PERFORM PRIVATE I/I REDUCTION AT 6 PROPERTIES.	902,000
LINDSAY - ST. ALBERT PRIVATE I/I REDUCTION	CONSTRUCT 870 FEET OF 8-INCH TO 12-INCH SANITARY SEWER AND PERFORM PRIVATE I/I REDUCTION AT 27 PROPERTIES.	500,000

Proposed Program – FY2023



- Work Order Repairs

Project Name	Description	Budget
INFRASTRUCTURE REPAIRS (WASTEWATER) (2023)	CONSTRUCT REPAIR OR REPLACEMENT OF WASTEWATER INFRASTRUCTURE DISTRICTWIDE.	9,000,000
STORMWATER INFRASTRUCTURE REPAIRS (2023)	CONSTRUCT REPAIR OR REPLACEMENT OF STORMWATER INFRASTRUCTURE THROUGHOUT THE DISTRICT.	4,000,000
INFRASTRUCTURE REPAIRS (FACILITIES) (2023)	CONSTRUCT REPAIR, REPLACEMENT, OR IMPROVEMENT PROJECTS TO ADDRESS NEEDS AT FACILITIES SUCH AS TREATMENT PLANTS AND PUMP STATIONS.	3,000,000

Proposed Program – FY2023



- Contingency Projects

Project Name	Description	Budget
HALL STREET STORM SEWERS	CONSTRUCT 5,500 FEET OF 12-INCH TO 66-INCH STORM SEWER, 523 FEET OF 72-INCH TUNNEL, AND 16,800 FEET OF DRAINAGE DITCH ALONG HALL STREET.	7,000,000
CAULKS CREEK PUMP STATION B (P-751) RELOCATION	RECONSTRUCT PUMP STATION AT NEW LOCATION.	5,000,000
WW-2 AND WW-3 WARSON WOODS SANITARY RELIEF	CONSTRUCT 10,600 FEET OF 8-INCH TO 24-INCH SANITARY SEWER. ELIMINATE CONSTRUCTED SSO OUTFALLS BP-156, BP-158, AND BP-501.	5,000,000
SCADA SYSTEM UPGRADE	CONSTRUCT SUPERVISORY CONTROL AND DATA ACQUISITION (SCADA) IMPROVEMENTS TO ALLOW FOR ACTIVE CONTROLS TO MANAGE WET WEATHER FLOWS.	5,000,000
HARLEM CITYSHED MITIGATION BASINS (ASHLAND AND ESSEX) - SEPARATION SEWERS	CONSTRUCT 16,320 OF STORM SEWER FOR SOFT SEPARATION.	4,800,000
HALLSTEAD STORM CHANNEL PHASE IV (MCBJ-230)	CONSTRUCT 1,220 FEET OF 45-FOOT WIDE BY 12-FOOT HIGH VERTICAL WALL CHANNEL, FROM VORHOFF DRIVE SOUTH TO HUDSON DRIVE.	4,200,000
NEW ENGLAND TOWN CLIFF CAVE PUMP STATION (P-323) IMPROVEMENTS	CONSTRUCT 3,500 FEET OF 8-INCH TO 12-INCH SANITARY SEWER, 1,600 FEET OF 6-INCH FORCEMAIN, AND REPLACE SANITARY PUMP STATION P-323.	4,000,000
VALLEY SANITARY RELIEF PHASE III	CONSTRUCT 6,960 FEET OF 8-INCH TO 15-INCH SANITARY SEWER.	4,000,000
GC-06 GRAVOIS CREEK TO BRIARSTONE AND GATES SANITARY RELIEF PHASE II	CONSTRUCT 4,700 FEET OF 8-INCH TO 18-INCH SANITARY SEWER, AND ELIMINATE CONSTRUCTED SSO OUTFALL BP-382.	3,758,000
UPPER BADEN SANITARY RELIEF (JENNINGS STATION RD TO OAKRIDGE BLVD)	CONSTRUCT 4,100 FEET OF 15-INCH TO 27-INCH SANITARY SEWER, AND ELIMINATE CONSTRUCTED SSO OUTFALL BP-001.	2,974,000
FILLMORE PUMP STATION (P-308) REHABILITATION	REHABILITATE THE MECHANICAL AND ELECTRICAL SYSTEMS, AND THE BUILDING ENVELOPE.	1,800,000
FRIEDENS (PARTIAL) I/I REDUCTION (CHAIN OF ROCKS DR AND FONTAINE PL)	CONSTRUCT 3,000 FEET OF 8-INCH TO 12-INCH STORM SEWER.	1,750,000

Proposed Program – FY2023



- Contingency Projects

Project Name	Description	Budget
SUTHERLAND LANSDOWNE COMBINED SEWER REPLACEMENT	REPLACE 470 FEET OF 10-INCH AND 310 FEET OF 15-INCH COMBINED SEWERS.	1,215,000
MISSISSIPPI FLOODWALL ORS PUMP STATIONS - LADDER REPLACEMENTS	REPLACE FIXED STEEL LADDERS INSIDE AND OUTSIDE OF PUMP STATIONS.	1,200,000
SPIRIT OF ST. LOUIS 1 PUMP STATION (P-735) REPLACEMENT	REPLACE PUMP STATION P-735.	1,085,000
VALLEY VIEW PUMP STATION (P-734) REPLACEMENT	REPLACE PUMP STATION P-734, AND 430 FEET OF FORCE MAIN.	600,000
HIGHGATE - ENFIELD STORM SEWER	CONSTRUCT 945 FEET OF 12-INCH TO 24-INCH STORM SEWER	520,000
FAIRWAY CT 3901 BANK STABILIZATION	CONSTRUCT 320 FEET OF 11 TO 15 FOOT HIGH HEAVY STONE REVETMENT BANK STABILIZATION.	487,000
OUTER LADUE AND CHIPPER STORM SEWER	CONSTRUCT 1,125 FEET OF 12-INCH TO 30-INCH STORM SEWER, AND 5 RAIN GARDENS.	434,000
GLENMARY TO WHITE ROSE STORM IMPROVEMENTS	CONSTRUCT 755 FEET OF 24-INCH TO 36-INCH STORM SEWER	380,000
DENNIS AND KAPPEL STORM SEWER	CONSTRUCT 970 FEET OF 15-INCH TO 27-INCH STORM SEWER.	334,000
BALLAS RD. - BALWYCK LN. BANK STABILIZATION	CONSTRUCT 520 FEET OF COMPOSITE BANK REVETMENT AND ONE GRADE CONTROL STRUCTURE.	322,000
WHITEHALL CT - PINE AVE STORM SEWER	CONSTRUCT 510 FEET OF 12-INCH TO 18-INCH STORM SEWER	270,000
SHERWOOD DR. #2790 STORM SEWER	CONSTRUCT 480 FEET OF 12-INCH TO 15-INCH STORM SEWER.	176,000

Proposed Program – FY2023-27

- Looking Ahead

Fiscal Year	Anticipated Construction Budget	Estimated # of bid opportunities
FY23	335,916,000	49
FY24	480,635,000	67
FY25	425,669,000	31
FY26	286,012,000	29
FY27	205,580,000	34
Total	1,733,812,000	210

Proposed Program – FY2024



- Procurements Needed

Construction Category	Estimated # of Bid Opportunities	FY24 Budget
CIPP	4	14,110,000
Facilities	3	13,000,000
Pump Stations	9	41,620,000
Sewers	43	101,336,000
PIR	2	2,086,000
Tunnels	0	0
Bank Stabilization	<u>6</u>	<u>7,243,000</u>
Total	67	179,395,000

Proposed Program – FY2025

- Procurements Needed

Construction Category	# Projects	Construction Budget
CIPP	3	14,000,000
Facilities	4	60,500,000
Pump Stations	1	5,000,000
Sewers	21	82,222,000
PIR	0	0
Tunnels	0	0
Bank Stabilization	<u>2</u>	<u>7,200,000</u>
Total	31	168,922,000

Proposed Program – FY2026

- Procurements Needed

Construction Category	# Projects	Construction Budget
CIPP	4	17,340,000
Facilities	2	10,400,000
Pump Stations	4	6,400,000
Sewers	19	28,312,000
PIR	0	0
Tunnels	0	0
Bank Stabilization	<u>0</u>	<u>0</u>
Total	29	62,452,000

Proposed Program – FY2027

- Procurements Needed

Construction Category	# Projects	Construction Budget
CIPP	4	22,000,000
Facilities	6	18,385,000
Pump Stations	7	9,685,000
Sewers	15	28,810,000
PIR	1	2,000,000
Tunnels	1	72,000,000
Bank Stabilization	<u>0</u>	<u>0</u>
Total	34	152,880,000

Proposed Program – FY2023-27



- Looking Ahead – Design Build Projects

Fiscal Year	Project
23	BISSELL & LEMAY WWTF FLUIDIZED BED INCINERATORS
24	ELTORA WET WEATHER STORAGE FACILITY
25	MISSISSIPPI FLOODWALL ORS PUMP STATIONS REHABILITATION PHASE IV

Prequalification Process

- Contractors must be prequalified to bid
- Prequalification applications are accepted at any time
- <https://msdprojectclear.org/doing-business/capital-improvement-replacement-program/capital-construction/prequalification-process/>
- Contractors are prequalified for Specific Work Categories
- Annual Renewal of Prequalification is required

Small Contractor Program (SCP)

- Program Purpose
- SCP Project Size
- SCP Typical Work Types
- <https://msdprojectclear.org/doing-business/capital-improvement-replacement-program/small-contractor-program/>

Michael Buechter, P.E.
Program Manager, Design
Engineering Division
Phone: (314) 768-2772
Fax: (314) 768-6341
E-mail: mtbuec@stlmsd.com

Bid Schedule

- <https://msdprojectclear.org/doing-business/capital-improvement-replacement-program/>

13352	CONSTRUCTION	STORMWATER QUALITY GREEN INFRASTRUCTURE - SMALL GRANT RAINSCAPING PROGRAM	\$200,000	\$200,000	5110	Dec-21	Dec-21	(FY22)	
13488	CONSTRUCTION	COLDWATER CREEK OMCI REIMBURSEMENTS PROGRAM	\$1,076,519	\$1,049,544	5564	Dec-21	Dec-21	(FY22)	
13487	CONSTRUCTION	DEER CREEK OMCI REIMBURSEMENTS PROGRAM	\$1,958,164	\$1,563,211	5566	Dec-21	Dec-21	(FY22)	
13491	CONSTRUCTION	SEMINARY OMCI REIMBURSEMENTS PROGRAM	\$124,292	\$124,292	5593	Dec-21	Dec-21	(FY22)	
13490	CONSTRUCTION	SUGAR CREEK OMCI REIMBURSEMENTS PROGRAM	\$149,499	\$148,421	5583	Dec-21	Dec-21	(FY22)	
13489	CONSTRUCTION	UNIVERSITY CITY OMCI REIMBURSEMENTS PROGRAM	\$495,049	\$478,012	5584	Dec-21	Dec-21	(FY22)	
12095	CONSULTANT/VENDOR	RADAR RAINFALL DATA (2020)	\$150,000	\$150,000	1101	Dec-21	Dec-21	(FY22)	
13467	DESIGN	SCADA SYSTEM UPGRADE	\$1,000,000		6660	Dec-21		(FY22)	Mar-22
12847	CONSTRUCTION	BADEN CITYSHED MITIGATION BASINS (CALVARY, FREDERIK, PARTRIDGE AND TILLIE) - SEPARATION SEWERS	\$4,000,000	\$4,000,000	6660	Jan-22	Jan-22	(FY22)	
11796	CONSTRUCTION	HARLEM BADEN RELIEF PHASE IV (HEBERT) - HAMILTON TO DARVER TRUNK SEWER	\$6,000,000		6660	Jan-22		(FY21)	May-22
12741	CONSTRUCTION	LOUISVILLE AVENUE AND OAKLAND AVENUE COMBINED SEWER RELIEF	\$2,275,000		6660	Feb-22		(FY22)	Feb-22
12364	CONSTRUCTION	OAKWOOD FARMS PUMP STATION (P-470) ELIMINATION	\$445,000	\$360,000	6660	Feb-22	Jan-22	(FY22)	
12153	CONSTRUCTION	EARTH CITY EXPRESSWAY PUMP STATION (P-708) REPLACEMENT	\$1,700,000		6660	Feb-22		(FY22)	Mar-22
12272	CONSTRUCTION	GRAND GLAIZE TRUNK SANITARY RELIEF (BALLWIN GOLF CLUB TO CLAYMONT COVE CT)	\$740,000		6660	Feb-22		(FY22)	Feb-22
10161	CONSTRUCTION	SCHUETZ ROAD SANITARY RELIEF (FOREST BROOK LN TO SUNNY WOOD CT)	\$753,000		6660	Feb-22		(FY22)	Feb-22
12368	CONSTRUCTION	PRICE TO PIONEER SANITARY RELIEF	\$4,000,000		6660	Feb-22		(FY22)	Apr-22
12212	CONSTRUCTION	ST. GEORGE CREEK SANITARY RELIEF (DAISY LN TO GRAVOIS RD TO NEW HAMPSHIRE AVE)	\$3,305,000		6660	Feb-22		(FY22)	Apr-22
13127	CONSTRUCTION	STORMWATER INFRASTRUCTURE REPAIRS (REHABILITATION) (2022)	\$2,000,000		5120	Mar-22		(FY22)	Mar-22
13031	CONSTRUCTION	BISSELL - COLDWATER - MISSOURI - MERAMEC PUBLIC W/ REDUCTION (2022) CONTRACT B	\$2,906,000		6660	Mar-22		(FY22)	Mar-22
11678	CONSTRUCTION	WEBSTER GROVES TRUNK E SANITARY REHABILITATION AND W/ REDUCTION PHASE IV PART 3	\$1,300,000		6660	Mar-22		(FY19)	May-22
10880	ACQUISITION	SIMS AVE 2201 STORM BUYOUT	\$200,000		5584	Mar-22		(FY21)	Mar-22
13017	CONSTRUCTION	INFRASTRUCTURE REPAIRS (REHABILITATION) (2022) CONTRACT B	\$2,500,000		6660	Apr-22		(FY22)	Apr-22
13599	CONSTRUCTION	EARTH CITY UPS PUMP STATION (P-702) REPLACEMENT PHASE II	\$1,500,000		6660	Apr-22		(FY22)	May-22
11937	CONSULTANT/VENDOR	GRAVOIS CREEK OMCI STORMWATER DESIGN (CONTRACT F)	\$30,000		5571	Apr-22		(FY22)	Apr-22
10293	CONSTRUCTION	RECO AVENUE BANK STABILIZATION	\$250,000		5571	Apr-22		(FY22)	Apr-22
13409	CONSTRUCTION	LOWER MERAMEC WWTF - ADMINISTRATION BUILDING FACILITY IMPROVEMENTS	\$1,800,000		6660	Apr-22		(FY22)	Apr-22

Plan Room

- <https://www.stlmsdplanroom.com/>



Home Contact Us Billing Customer Service: 1 (314) 281-5737 Email: billingquest@stlmsd.com


wastewater + stormwater

Planroom

Planroom Home
Public Jobs
Private Jobs
Job Calendar

Login

Username

Password

☐ Remember me

Register for an account

[Forgot password?](#)

WELCOME TO OUR PLANROOM

*Fast and easy access to our projects anytime, anywhere.
View drawings, order prints, upload files and much more.*

Register for your free planroom account

[Get Started](#)

Prevailing Wage Program

- <https://msdprojectclear.org/doing-business/prevailing-wage/>



The screenshot displays the MSD Project Clear website's "Prevailing Wage" page. The top navigation bar includes links for News, Events, Careers, Report an Issue, Contact Us, Customer Service (1 (314) 768-6260), Billing (1 (866) 281-5737), and a "PAY BILL NOW" button. The main header features the MSD Project Clear logo and a navigation menu with links for About Us, What We Do, Customers, Doing Business With Us, Community & Education, Projects, and a Search icon. The page title "Prevailing Wage" is prominently displayed in a large, white font on a dark blue background. Below the title, a breadcrumb trail shows the path: Home > Doing Business With Us > Prevailing Wage. On the left side, a sidebar menu lists "Prevailing Wage" with sub-options: Overview (highlighted with a blue arrow), Current Wage Orders, and Historical Wage Orders. The main content area is titled "MSD Prevailing Wage Program" and contains text stating that on April 11, 2019, the Metropolitan St. Louis Sewer District's Board of Trustees adopted Ordinance 15136, establishing a Prevailing Wage Program. It also provides a link to "The Metropolitan St. Louis Sewer District Prevailing Wage Rules." At the bottom, there are two tabs: "Projects Subject to MSD Prevailing Wage" and "How the Prevailing Wage is Calculated". A blue box at the bottom left encourages users to "Find answers fast" and provides a search function with a "GO" button.

News Events Careers Report an Issue Contact Us Customer Service: 1 (314) 768-6260 Billing: 1 (866) 281-5737 PAY BILL NOW

MSD project
clear®
wastewater + stormwater

About Us ▾ What We Do ▾ Customers ▾ Doing Business With Us ▾ Community & Education ▾ Projects ▾ Search 🔍

Prevailing Wage

[Home](#) > [Doing Business With Us](#) > Prevailing Wage

Prevailing Wage

- Overview
- Current Wage Orders
- Historical Wage Orders

MSD Prevailing Wage Program

On April 11, 2019, the Metropolitan St. Louis Sewer District's Board of Trustees adopted [Ordinance 15136](#) establishing a Prevailing Wage Program that meets its Charter requirement to pay prevailing wages on improvement projects.

Additional information on the requirements of the District's Prevailing Wage Program is provided in [The Metropolitan St. Louis Sewer District Prevailing Wage Rules](#).

Find answers fast.

Select a subject from the menu below:

Select a subject ▾ GO

Projects Subject to MSD Prevailing Wage How the Prevailing Wage is Calculated

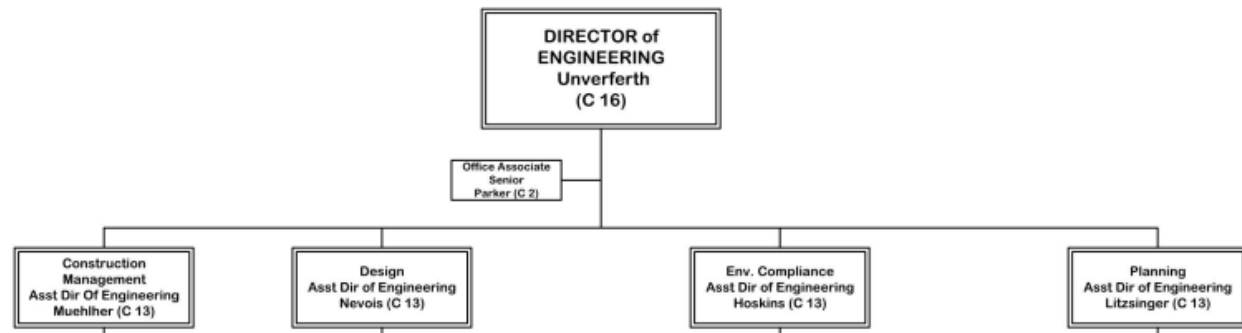
Construction Management Division Staffing

<https://msdprojectclear.org/about/our-organization/departments/engineering/>

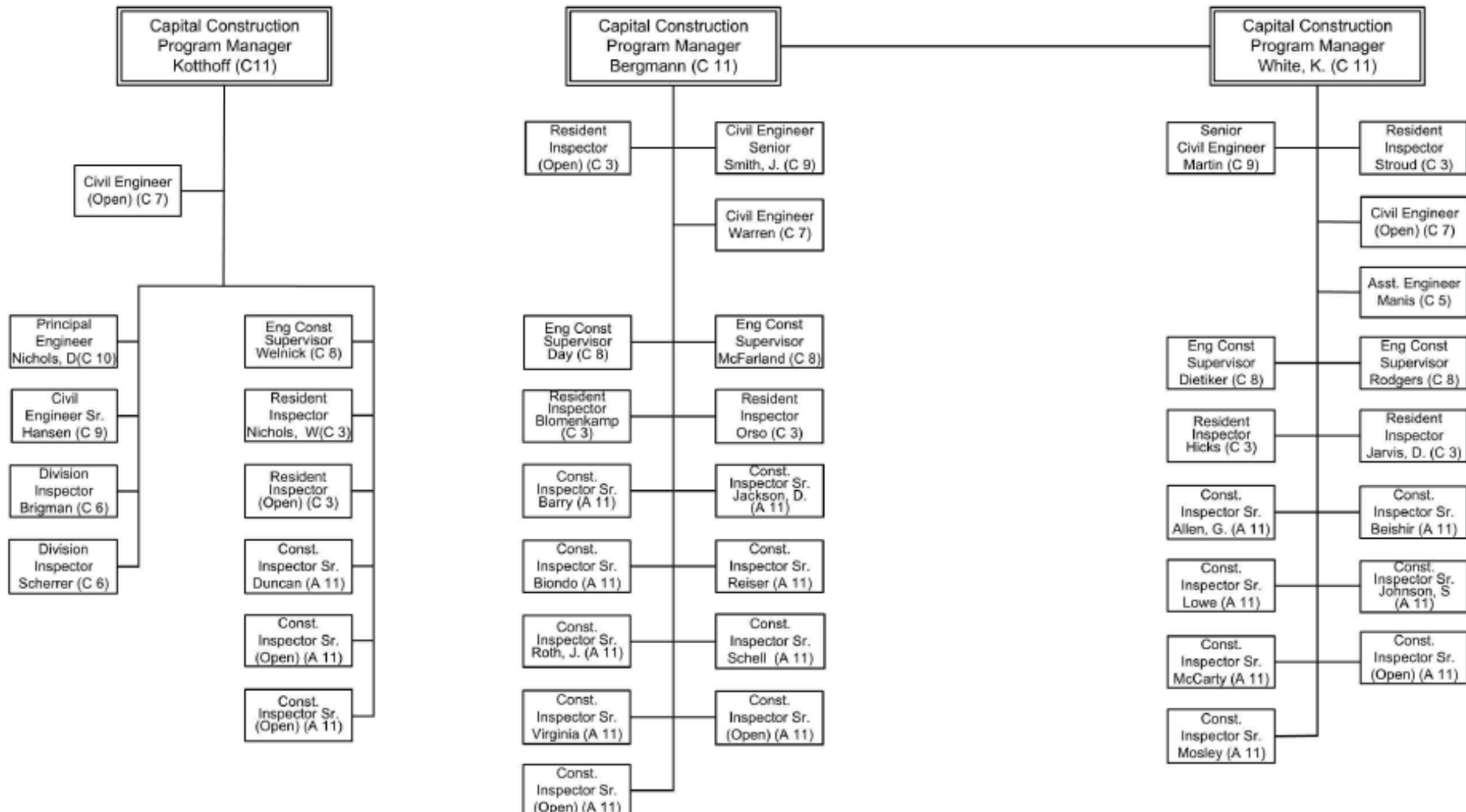
METROPOLITAN ST. LOUIS SEWER DISTRICT



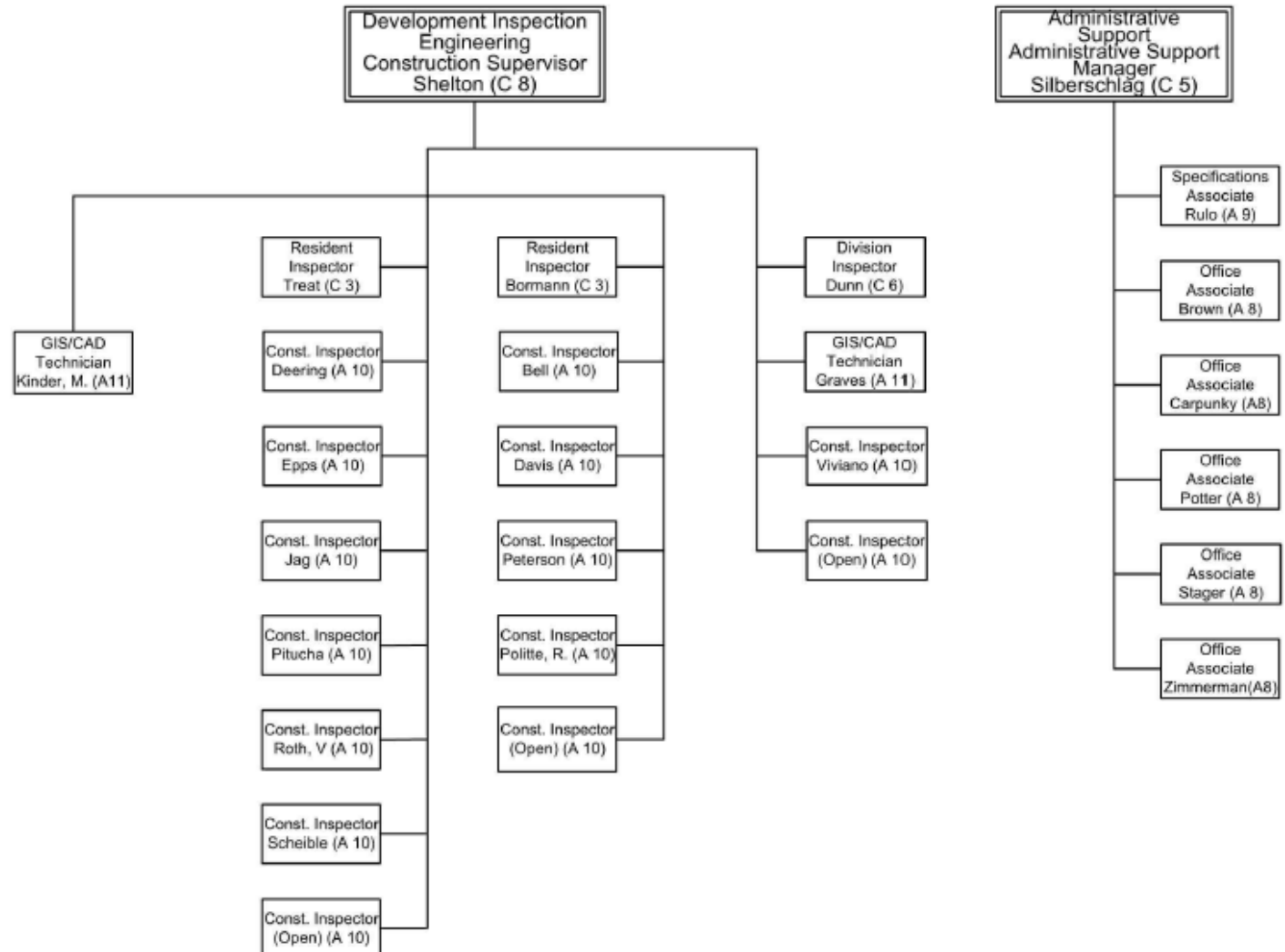
ENGINEERING DEPARTMENT



CONSTRUCTION MANAGEMENT DIVISION



CONSTRUCTION MANAGEMENT DIVISION



Metropolitan St. Louis Sewer District Disparity Study and Workforce Study Update

April 20,
2022



stormwater

Summary of Disparity Study Recommendations



Race and Gender-Conscious Prime Contract Remedies

- Apply prime incentive credits for engineering professional services and non-engineering professional services contracts.
- Implement a Sheltered Market Program to increase MWSBE utilization.
- Implement a Mentor-Protégé Program to increase MWSBE capacity.

Race and Gender-Conscious Subcontract Remedies

- Set subcontract MWBE goals for the ethnic and gender groups with a statistically significant disparity.
 - Building Construction – 21% MBE and 10% WBE Subcontracting Goals
 - Non-Building Construction – 10% MBE and 10% WBE Subcontracting Goals
 - Engineering Professional Services – 18% MBE and 13% WBE Subcontracting Goals
- Revise MWBE participation requirements for truckers.

Race and Gender-Neutral Recommendations

- Modify the electronic subcontract tracking system to report both MWBE and non-MWBEs subcontractors.
- Require reporting on all MWBE's and non-MWBE subcontractors on all bid and proposal contracts.

Workforce Recommendations

- Construction – 37% Minority and 11% Women
- Construction Apprentice - 46% Minorities and Women
- Engineering Professional Services – 31% Minorities and 37% Women

Shonnah
Paredes,
Manager of
Diversity
Programs,
Metropolitan
St. Louis
Sewer District
(314) 768-
6395
sparedes@stlmsd.com



MSD Next Steps

- Disparity Study presentation and documents available on MSD's website:
<http://www.msdpjectclear.org/disparity>
- MSD will collect public input and comments through April 30, 2022
- Board Introduction (June, 2022)
- Board Adoption (July, 2022)
- Implementation plans to begin upon Board approval.
- Program changes beginning of FY2024 (July 1, 2023).

Executive Director's Update

- Plans for Stormwater Program
- Status of Board of Trustees

Further Details will be provided during Quarterly AGC/SITE Update Meetings

Questions and Answers

www.MSDProjectClear.org

Thanks to:



AGCMO
MISSOURI CHAPTER
THE CONSTRUCTION ASSOCIATION

