

Louisville and Oakland Ave. Combined Sewer Relief

Project #12741

June 14, 2022

Today's Roadmap

- Technology Overview and Ground Rules
- Overview of MSDPC
- Project Overview and Specifics
- Q&A

Notes on our Virtual Town Hall Platform

- Participants are in listen-and-view mode
- There are several ways to engage
 - Type your question using Q/A icon at the bottom of your screen at any time (even before the Q/A portion has begun)
 - Everyone can read all questions posed and you can “Upvote” questions you want answered

MSD Project Clear (MSDPC) Overview & Details

- Government Utility
 - State Constitution
 - Voter Approved Charter in 1954
 - 6 Member Board of Trustees (3 City & 3 County)
- Two utilities: Wastewater & Stormwater
- 520 square mile service area
 - All of St. Louis City
 - 87% of St. Louis County
- ~1,300,000 customers
- 88 municipalities served
- 7 Treatment Plants
- 350+ million gallons per day of wastewater treated
- 4,700+ miles of wastewater sewers
- 1,800+ miles of combined sewers
- 3,000+ miles of stormwater sewers
- 4th largest sewer system in the United States (as measured by miles of sewers handling wastewater)

Louisville and Oakland – Project #12741

Mark Dietiker

MSD Project Manager
314-768-6380
mdietiker@stlmsd.com

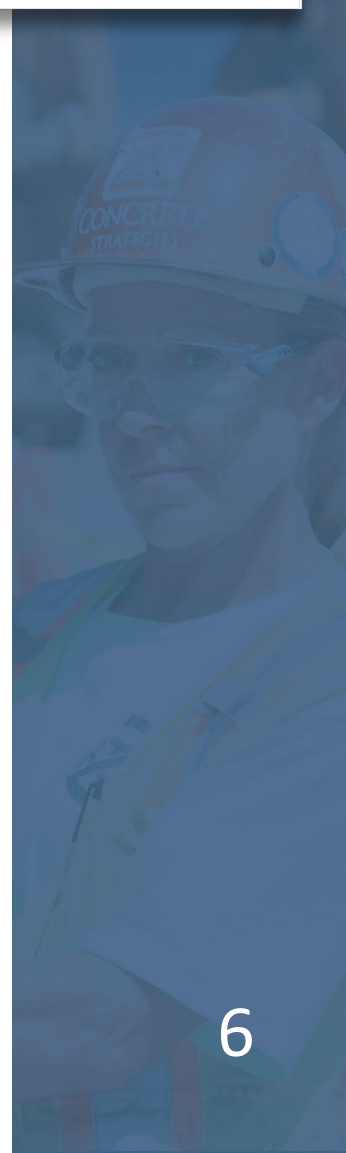
Lamarr Mosley

MSD Onsite Inspector
314-448-6462
Lmosley@stlmsd.com



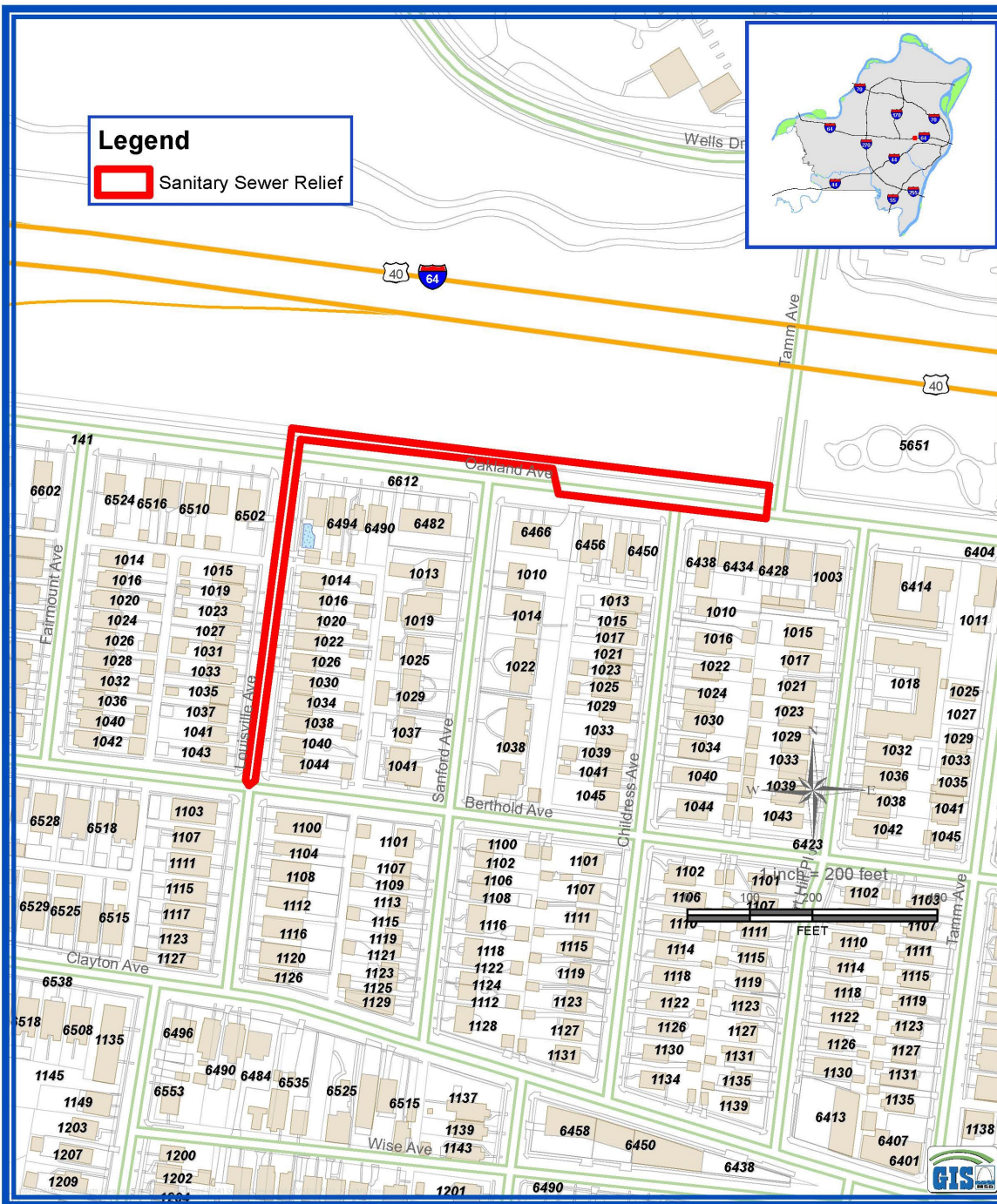
Project Overview

- General Goal
 - Increase the capacity of the sewer in this area
- Project Scope
 - Replace approximately 1,000 feet of sewer with larger pipe between 12” and 36” in diameter
 - Install approximately 800 feet of 96” diameter underground storage
- Benefits
 - Reduce basement backups
 - Reduce sewer overflows



Tentative Construction Schedule

- Start: July 2022
- End: Summer 2023



Previous Public Engagement

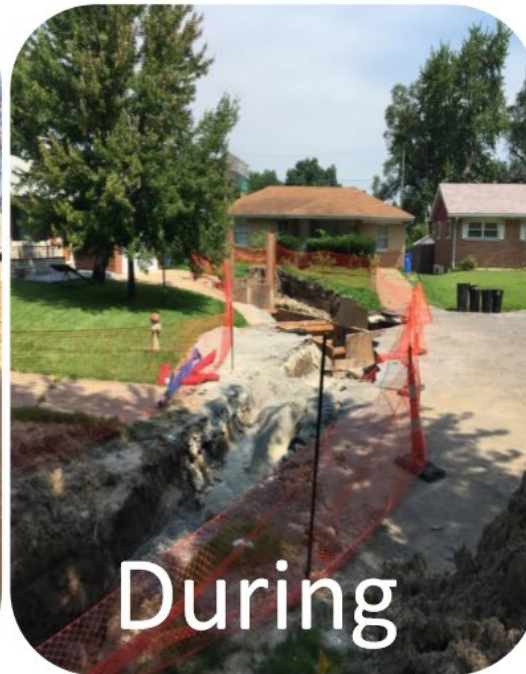
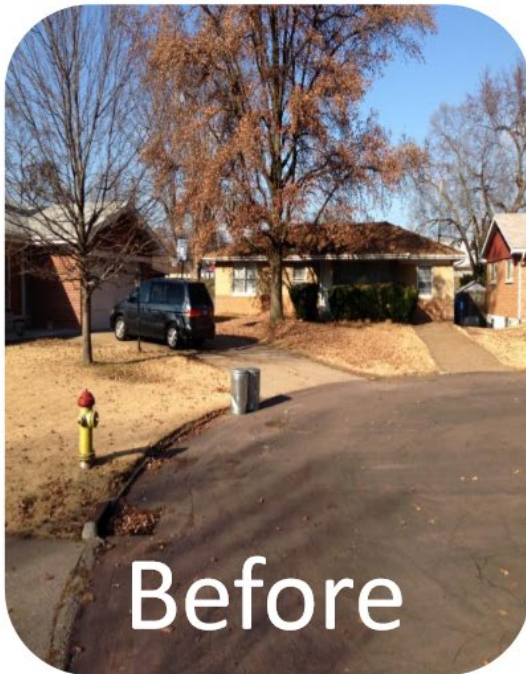
- September 2019 – Neighborhood Public Meeting

What can residents expect?

- Trenches or “open-cut” excavation
- Construction noise during normal business hours
- Traffic Control Plan and access issues
 - Lane and road closures will temporarily affect traffic
 - Temporary access restrictions to residential/commercial properties
 - No street parking during construction

How will it look when construction is finished?

- Trenches backfilled soon after pipe is installed
- Roadway and sidewalk restoration
- Private property restoration per easement



FAQs

- Will this work disrupt sewer or other utility services?
- Will construction affect access to my property?
- Will trees be removed as part of this project?
- How will this project affect street parking?
- Will the landscaping between the sidewalk and the street be affected?

Questions?

Mark Dietiker

MSD Project Manager

314-768-6380

mdietiker@stlmsd.com

Lamarr Mosley

MSD Onsite Inspector

314-448-6462

Lmosley@stlmsd.com

MSDprojectclear.org/Louisville

