

Cross Timbers Sanitary Relief (13163) Virtual Town Hall

December 5, 2023

Today's Roadmap

- Technology Overview and Ground Rules
- Overview of MSDPC
- Project Overview and Specifics
- FAQs
- Q&A

Notes on our Virtual Town Hall Platform

- Participants are in listen-and-view mode
- There are several ways to engage
 - Type your question using Q/A icon at the bottom of your screen at any time (even before the Q/A portion has begun)
 - Everyone can read all questions posed and you can “Upvote” questions you want answered

MSD Project Clear (MSDPC) Overview & Details

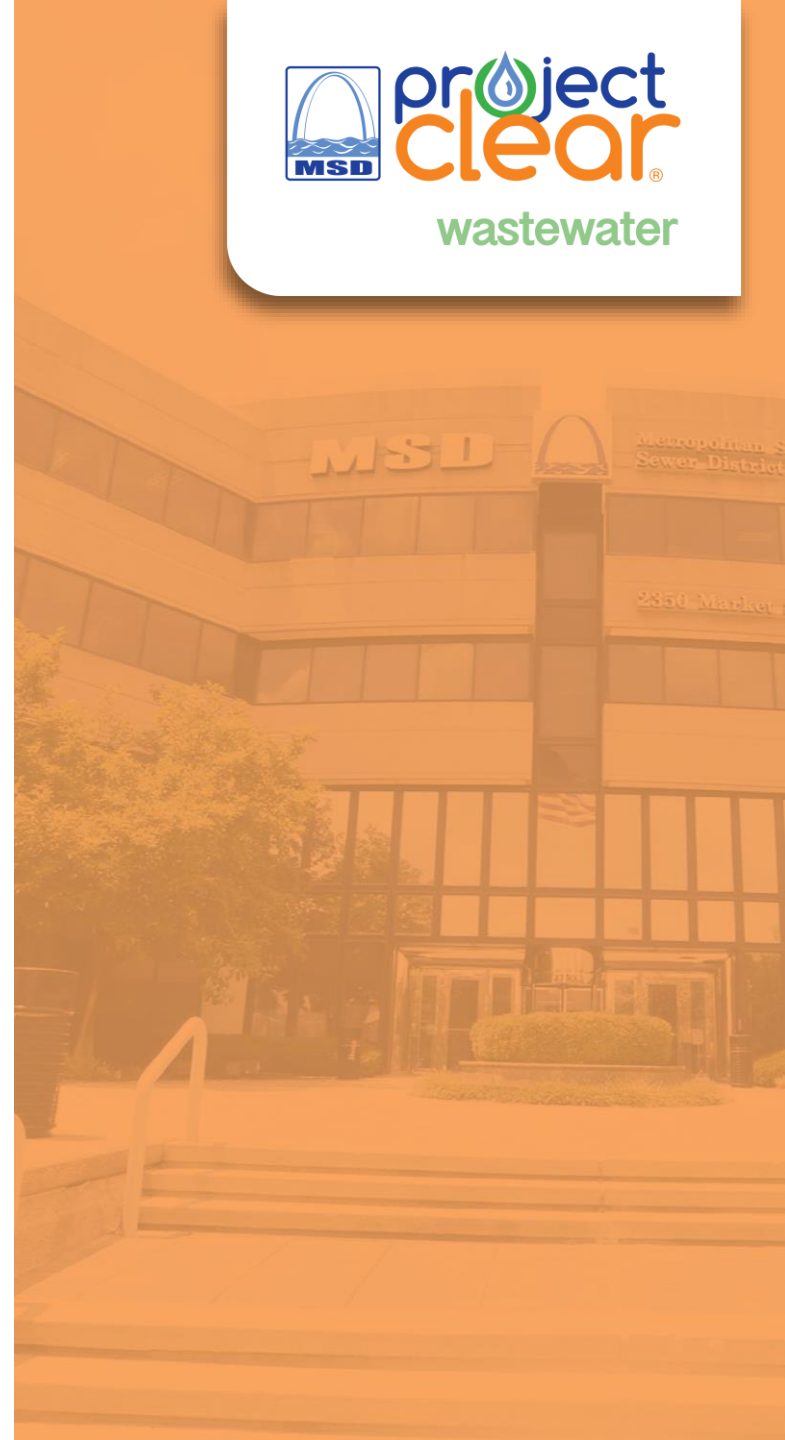
- Government Utility
 - State Constitution
 - Voter Approved Charter in 1954
 - 6 Member Board of Trustees (3 City & 3 County)
- Two utilities: Wastewater & Stormwater
- 520 square mile service area
 - All of St. Louis City
 - 87% of St. Louis County
- ~1,300,000 customers
- 88 municipalities served
- 7 Treatment Plants
- 350+ million gallons per day of wastewater treated
- 4,700+ miles of wastewater sewers
- 1,800+ miles of combined sewers
- 3,000+ miles of stormwater sewers
- 4th largest sewer system in the United States (as measured by miles of sewers handling wastewater)

Cross Timbers Sanitary Relief (13163)

Gerald Allen
(MSD Construction Supervisor)
gallen@stlmsd.com
314-768-6381

Matt Spinnenweber (Keeley Construction)
mspinnenweber@keeleyconstruction.com
314-421-5933

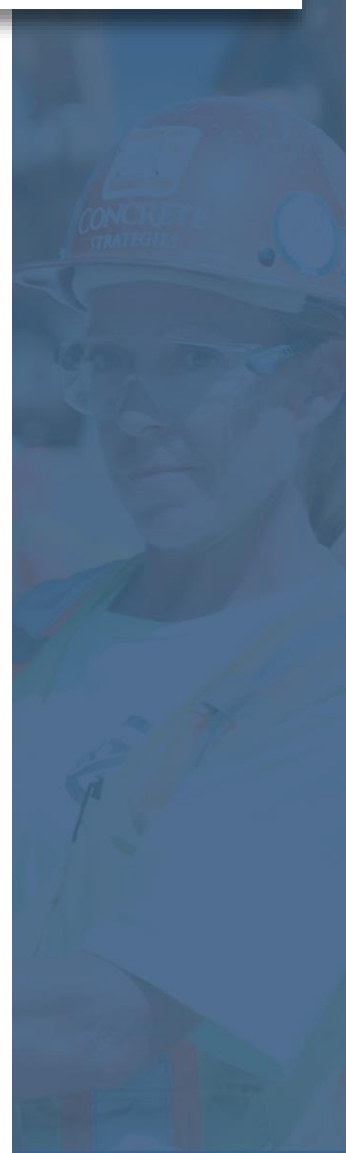
Dennis Schell (MSD Inspector)
dschell@stlmsd.com
314-267-5286



Project Overview



- General Goal
 - Repair existing wastewater infrastructure
- Project Scope
 - Construct approximately 400 feet of sewer with pipe 8" in diameter
 - Construct approximately 500 feet of 2" force main
 - Install four grinder pump systems and appurtenances
- Benefits
 - Reduce basement backups

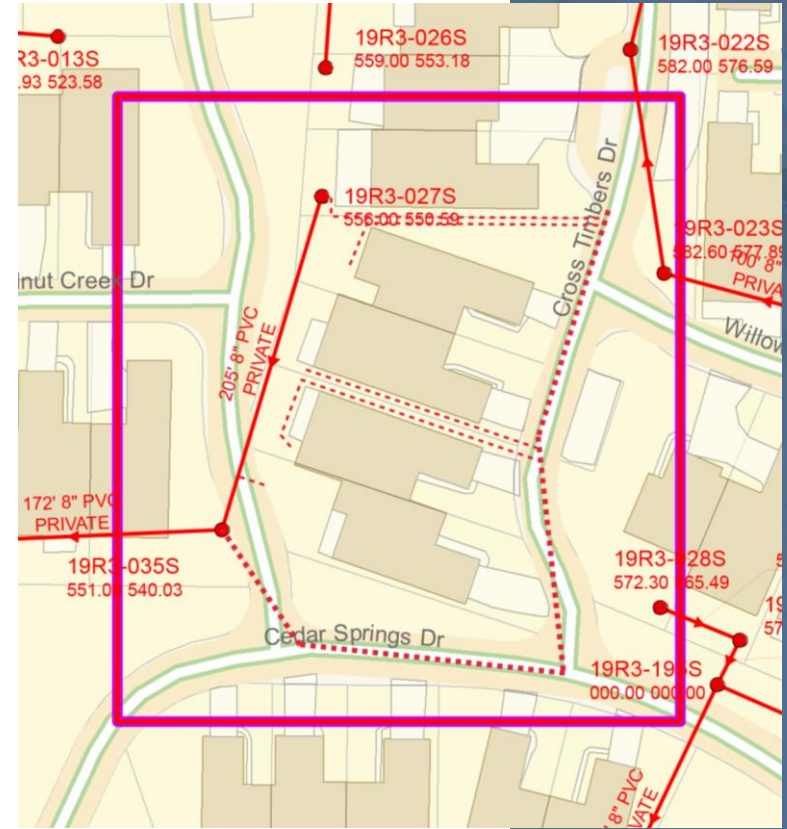
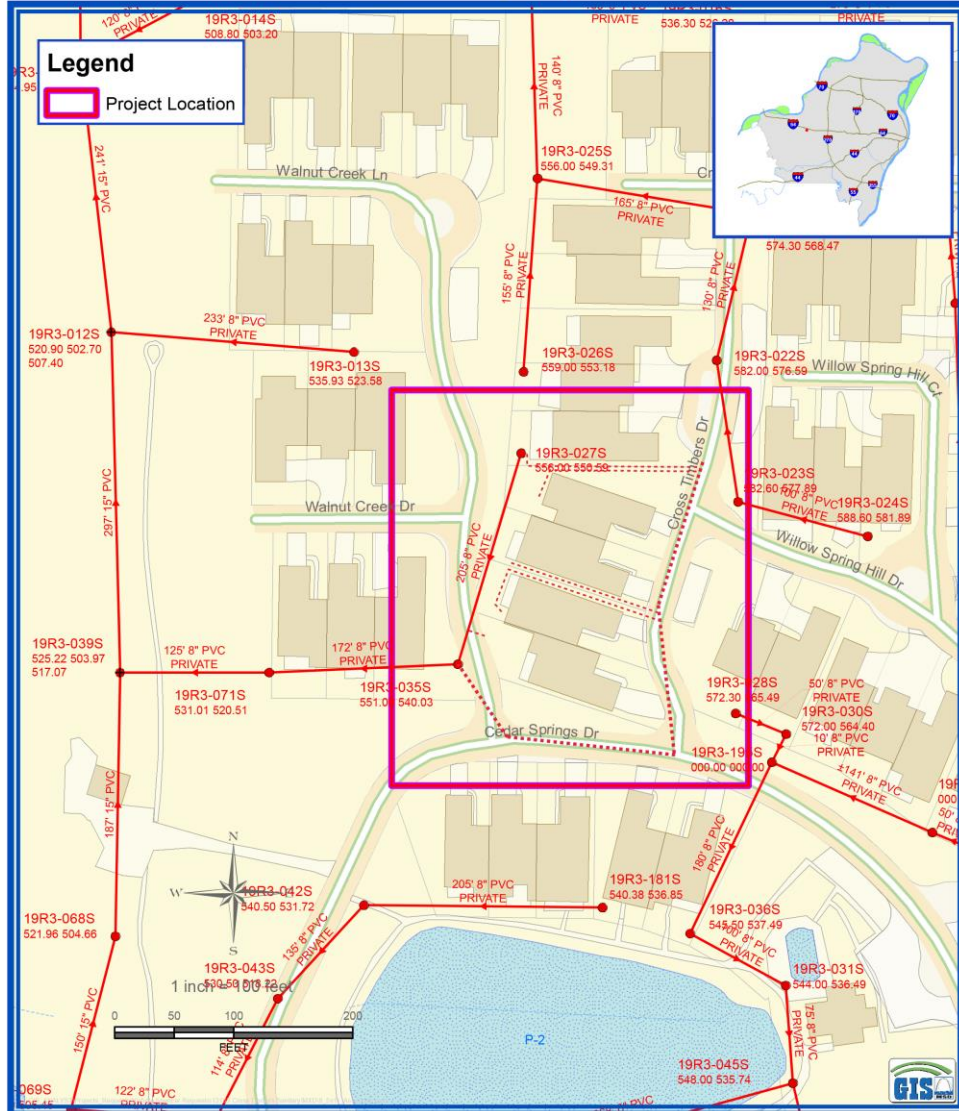


Project Map



The Metropolitan St. Louis Sewer District

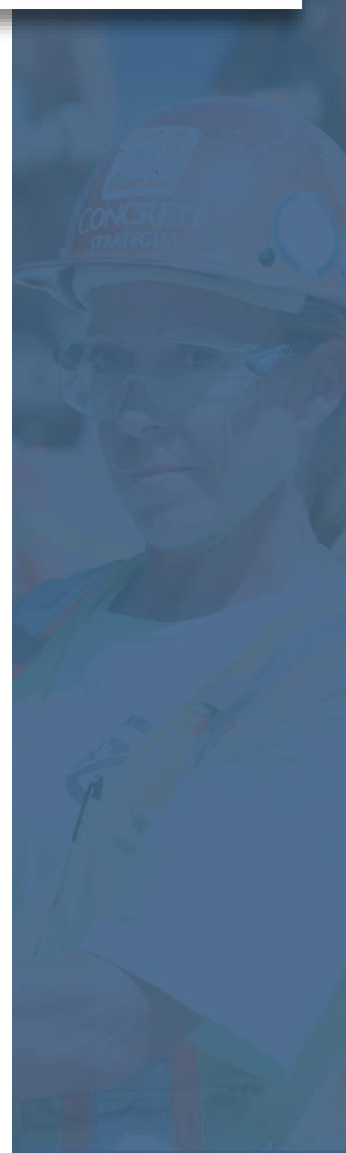
Cross Timbers Sanitary Replacement (13163)



Tentative Construction Schedule

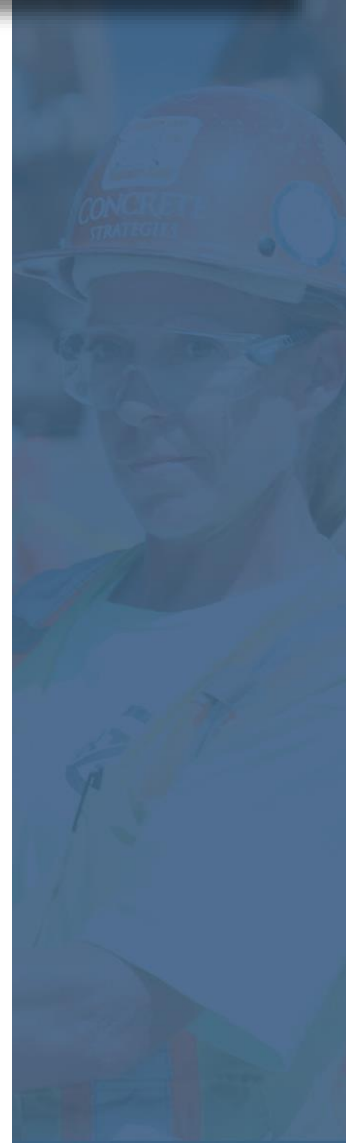
- **Start:** February 2024
- **End:** December 2024

Construction schedule is subject to change based on weather, utility conflicts, supply chain problems, and other unforeseen issues.



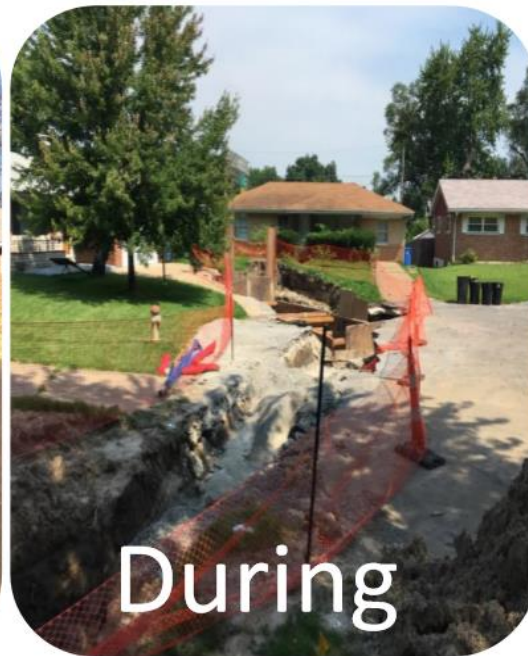
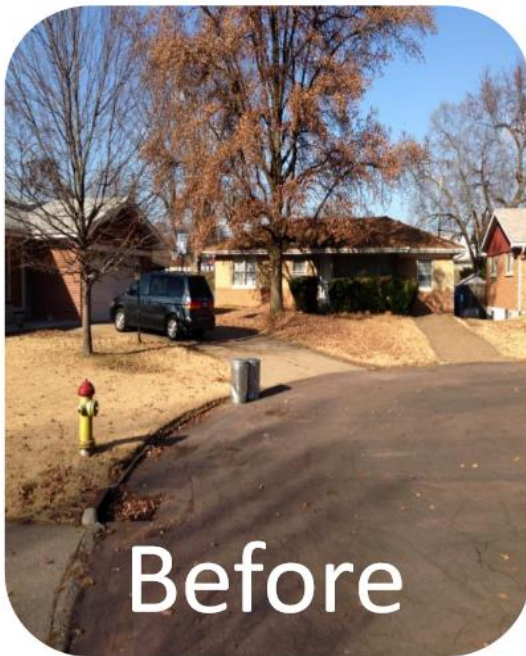
What can residents expect?

- Trenches or “open-cut” excavation
- Construction during normal business hours
- Temporary access restrictions to residential properties
- Contractor will notify property owners before access restrictions



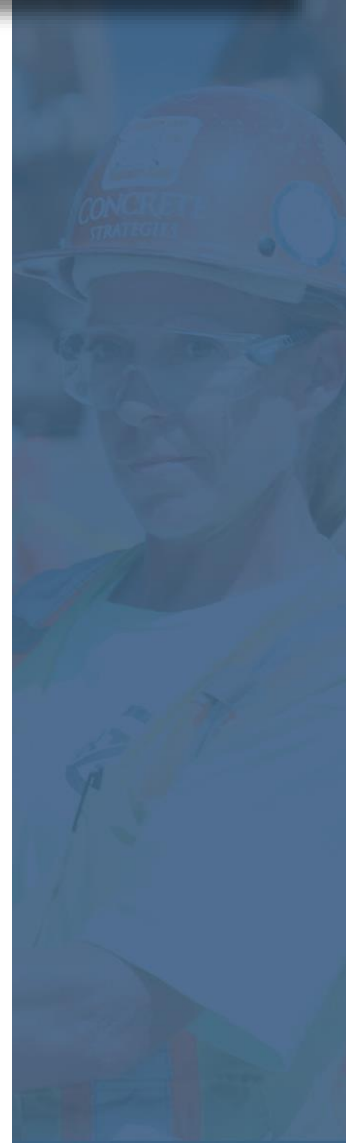
How will it look when construction is finished?

- Trenches backfilled soon after pipe is installed
- Roadway and sidewalk restoration
- Private property restoration



FAQs

- Will this work disrupt sewer or other utility services?
- Will construction affect access to my property?
- Will trees be removed as part of this project?



Questions?

Gerald Allen
(MSD Construction Supervisor)
gallen@stlmsd.com
314-768-6381

Matt Spinnenweber (Keeley Construction)
mspinnenweber@keeleyconstruction.com
314-421-5933

Dennis Schell (MSD Inspector)
dschell@stlmsd.com
314-267-5286

MSDprojectclear.org/13163

