

Brentwood and Red Bud CSO Elimination (12139) Virtual Town Hall

January 10, 2023

Today's Roadmap

- Technology Overview and Ground Rules
- Overview of MSDPC
- Project Overview and Specifics
- FAQs
- Q&A

Notes on our Virtual Town Hall Platform

- Participants are in listen-and-view mode
- There are several ways to engage
 - Type your question using Q/A icon at the bottom of your screen at any time (even before the Q/A portion has begun)
 - Everyone can read all questions posed and you can “Upvote” questions you want answered

MSD Project Clear (MSDPC) Overview & Details

- Government Utility
 - State Constitution
 - Voter Approved Charter in 1954
 - 6 Member Board of Trustees (3 City & 3 County)
- Two utilities: Wastewater & Stormwater
- 520 square mile service area
 - All of St. Louis City
 - 87% of St. Louis County
- ~1,300,000 customers
- 88 municipalities served
- 7 Treatment Plants
- 350+ million gallons per day of wastewater treated
- 4,700+ miles of wastewater sewers
- 1,800+ miles of combined sewers
- 3,000+ miles of stormwater sewers
- 4th largest sewer system in the United States (as measured by miles of sewers handling wastewater)

Brentwood and Red Bud CSO Elimination (12139)

Patricia Pride (MSD Project Manager)

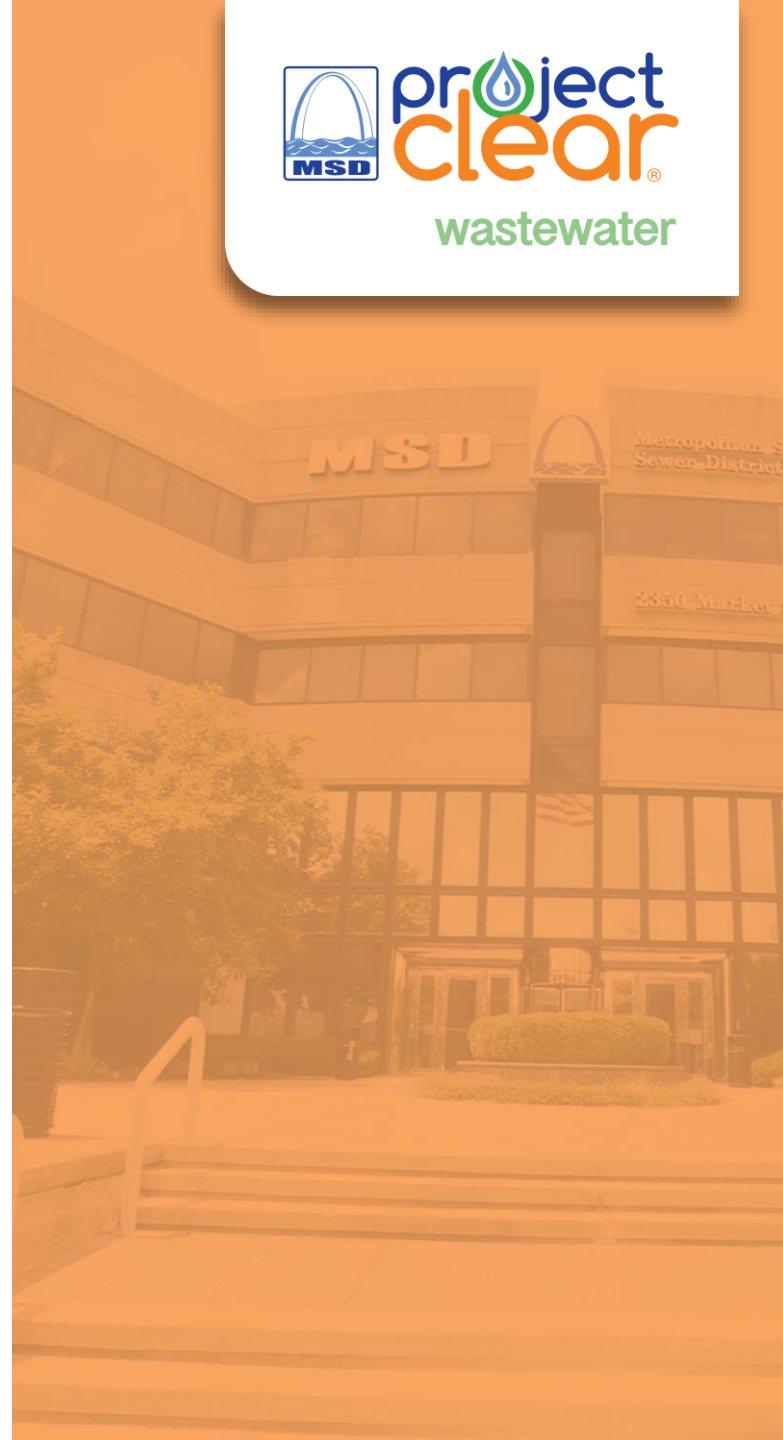
paprid@stlmsd.com

314-768-6275

Robert Kuenzel (HDR, Inc.)

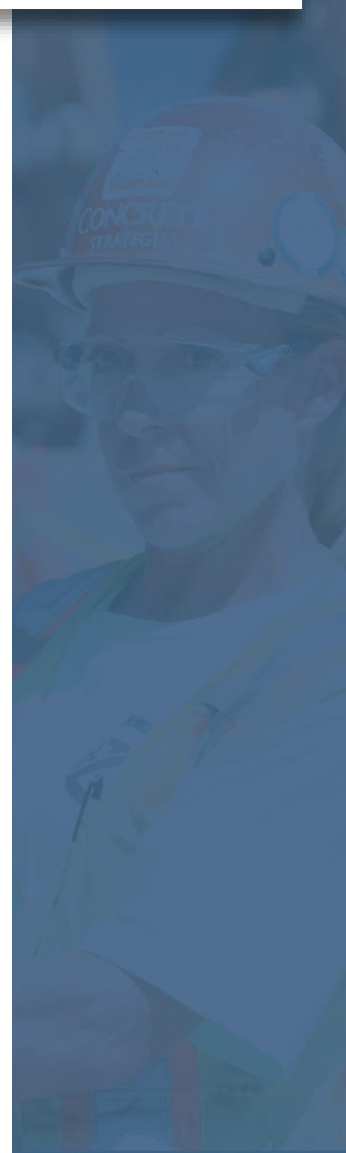
robert.kuenzel@hdrinc.com

314-425-8302



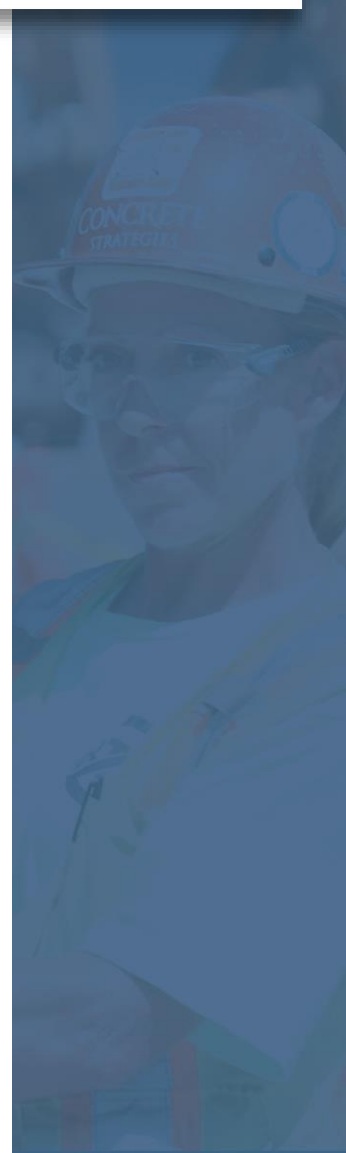
Project Overview

- General Goal
 - Increase the capacity of the wastewater and stormwater sewers in this area
 - Reduce basement backups
 - Reduce wastewater overflows
- Project Scope
 - Required by Consent Decree (CD) and Long-Term Control Plan
 - Inflow removal at up to 65 properties
 - Replace approximately 9,200 feet of wastewater pipe
 - Replace approximately 4,200 feet of stormwater pipe
 - Increase wastewater pipe size to 6"-30"
 - Increase stormwater pipe size to 12"-21"
- Benefits
 - Eliminate 1 constructed overflow point (CSO)
 - Fewer basement backups
 - Cleaner waterways

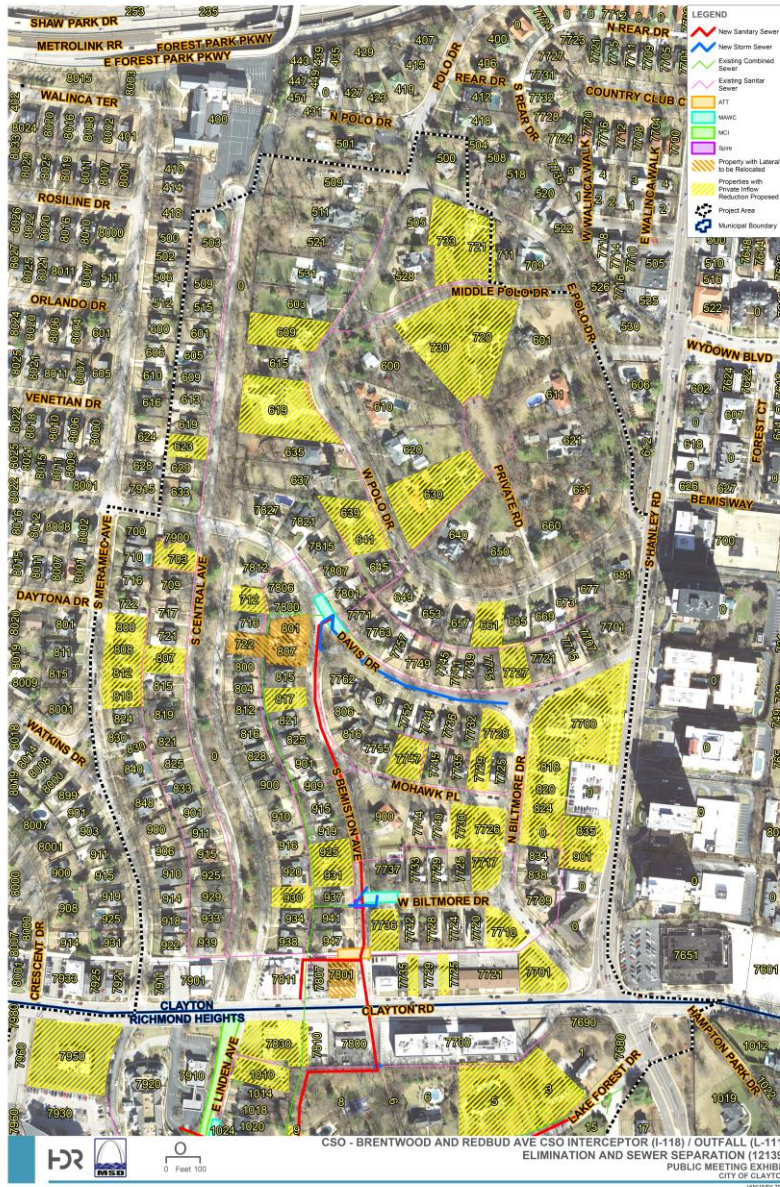


Utility Relocation

- Pilot project to reduce conflicts with other utilities prior to construction
- Coordination with Spire, AT&T, Missouri American Water and Ameren to relocate utilities
- Restoration will be performed upon completion

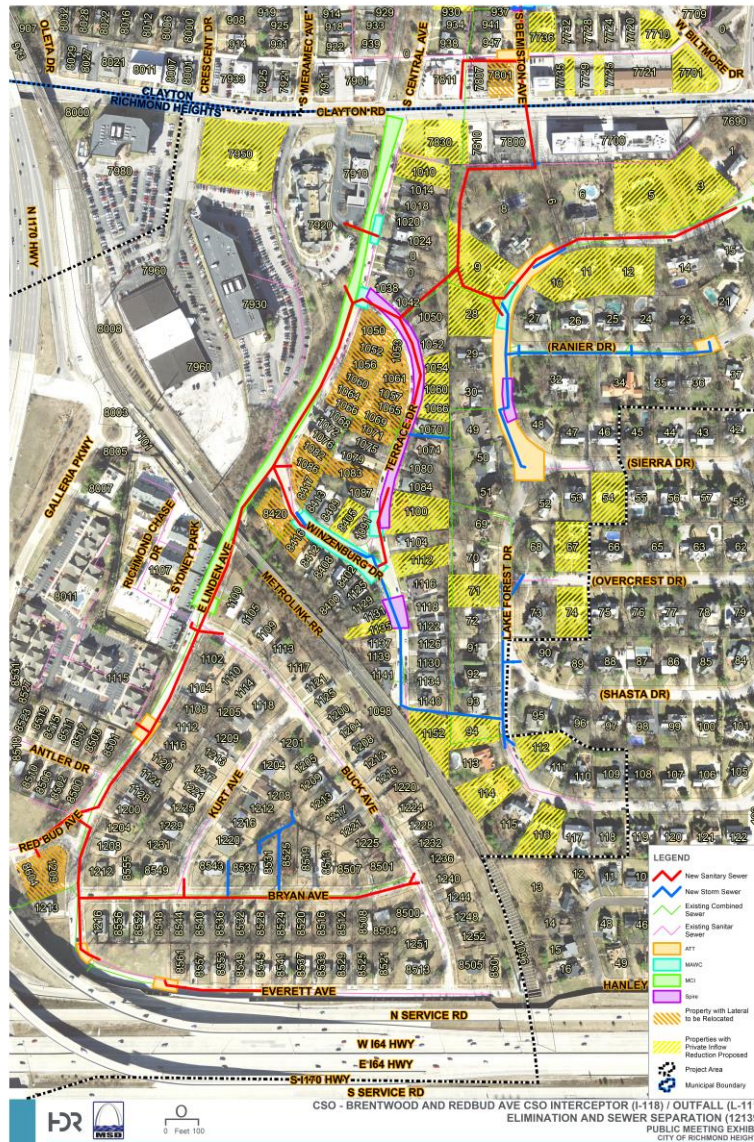


Project Map – Northern part



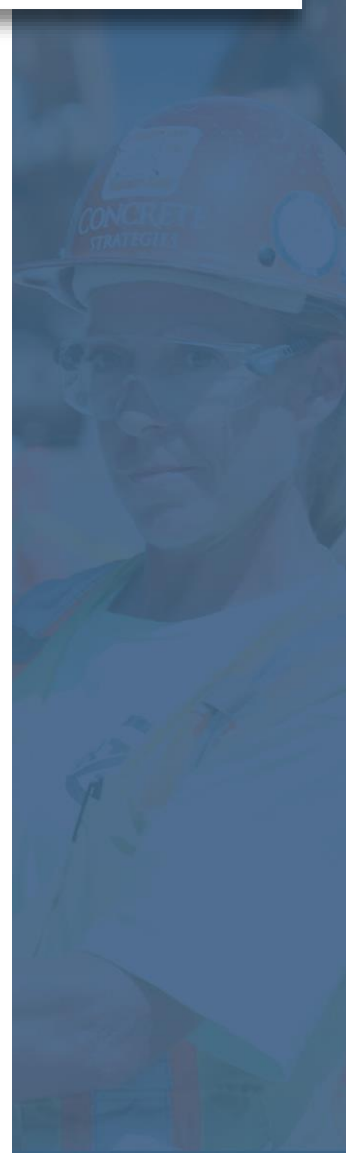
- Design completion:
 - Summer 2020
- Utility relocation:
 - Early 2024
(approximately 6 months duration)
- Easement acquisition completion:
 - Fall 2024
- Estimated construction start:
 - Late 2024
- Estimated duration:
 - 3 years

Project Map – Southern part



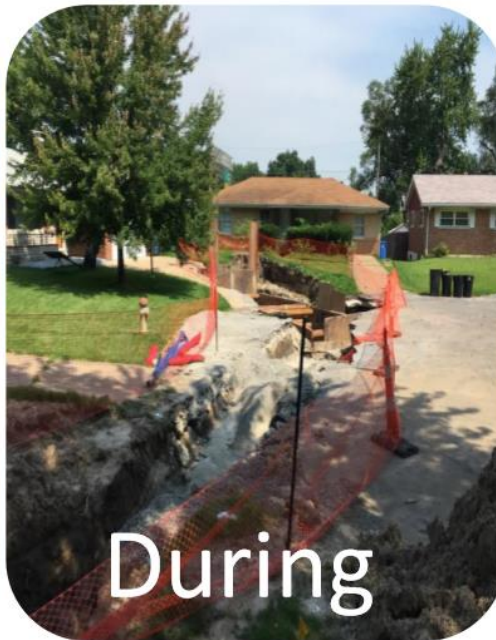
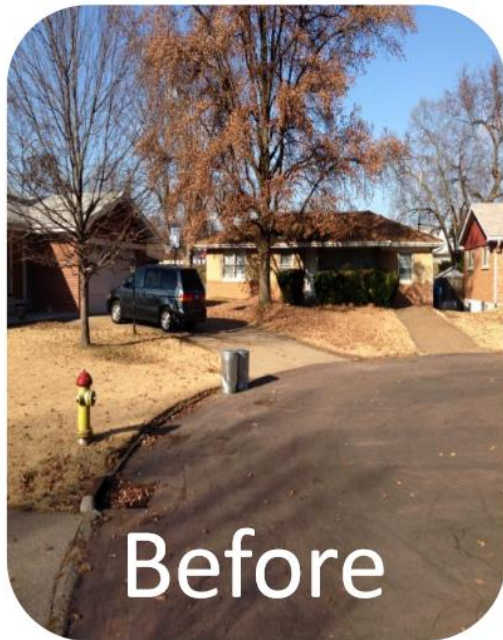
What can residents expect?

- Trenches or “open-cut” excavation
- Tunneling proposed on Clayton Road beneath Metrolink at Linden Avenue and the alley west of Bemiston Avenue
- Construction noise during normal business hours
- Traffic Control Plan and access issues
 - Lane and road closures will temporarily affect traffic
 - Temporary access restrictions to residential properties
 - Contractor will notify property owners before access restrictions



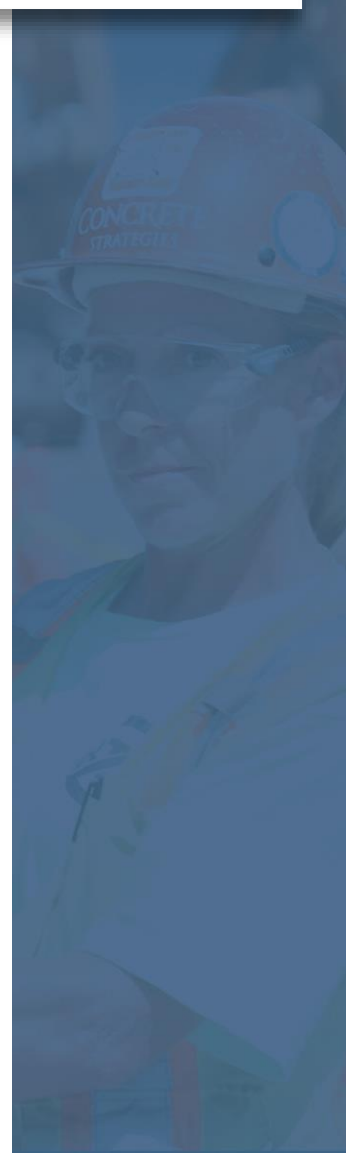
How will it look when construction is finished?

- Trenches backfilled soon after pipe is installed
- Roadway and sidewalk restoration
- Private property restoration per easement



FAQs

- Will this work disrupt sewer or other utility services?
- Will trees be removed as part of this project?
- Will construction affect access to my driveway?
- Will emergency vehicles have access to my property during construction?



Questions?

Patricia Pride (MSD Project Manager)

paprid@stlmsd.com

314-768-6275

Robert Kuenzel (HDR, Inc.)

robert.kuenzel@hdrinc.com

314-425-8302

MSDProjectClear.org/brentwoodredbud

