



# Edmundson Sanitary Relief (12159) Virtual Town Hall

February 20, 2024

## Today's Roadmap

- Technology Overview and Ground Rules
- Overview of MSDPC
- Project Overview and Specifics
- FAQs
- Q&A

## Notes on our Virtual Town Hall Platform

- Participants are in listen-and-view mode
- There are several ways to engage
  - Type your question using Q/A icon at the bottom of your screen at any time (even before the Q/A portion has begun)
  - Everyone can read all questions posed and you can “Upvote” questions you want answered

# MSD Project Clear (MSDPC) Overview & Details

- Government Utility
  - State Constitution
  - Voter Approved Charter in 1954
  - 6 Member Board of Trustees (3 City & 3 County)
- Two utilities: Wastewater & Stormwater
- 520 square mile service area
  - All of St. Louis City
  - 87% of St. Louis County
- ~1,300,000 customers
- 88 municipalities served
- 7 Treatment Plants
- 350+ million gallons per day of wastewater treated
- 4,700+ miles of wastewater sewers
- 1,800+ miles of combined sewers
- 3,000+ miles of stormwater sewers
- 4th largest sewer system in the United States (as measured by miles of sewers handling wastewater)



# Edmundson Sanitary Relief (12159)

**Andy Day (MSD Project Manager)**

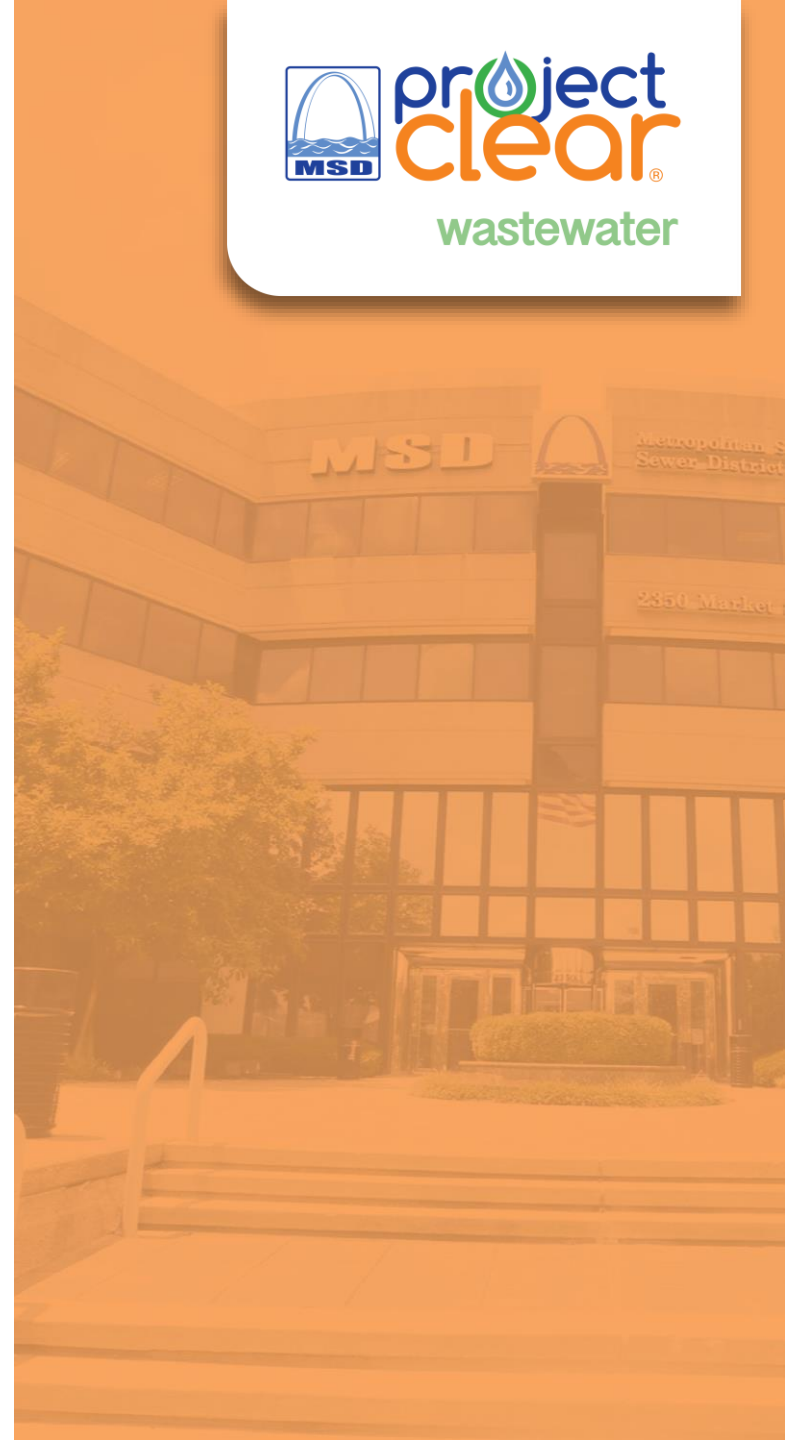
[aday@stlmsd.com](mailto:aday@stlmsd.com)

314-768-2799

**Paul Warner (Gershenson)**

[paul@gershenson.com](mailto:paul@gershenson.com)

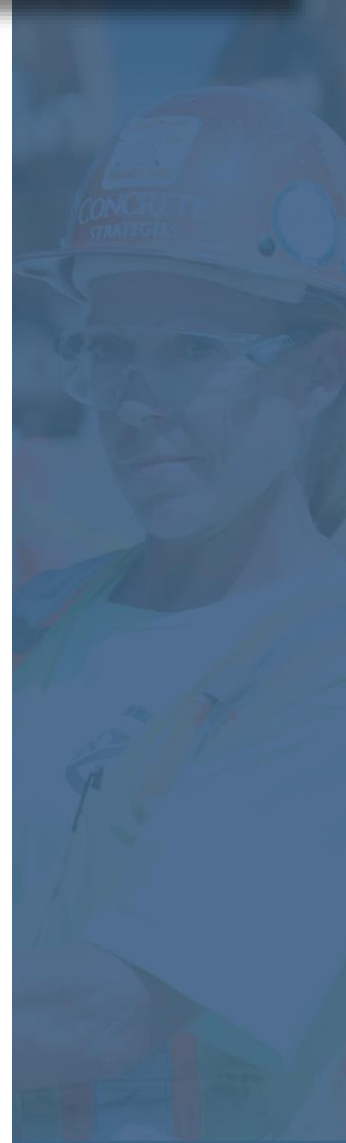
636-549-0222



# Project Overview



- General Goal
  - Increase the capacity of the sewer in this area
- Project Scope
  - Replace approximately 2,500 feet of sewer with larger pipe between 8" and 18" in diameter
- Benefits
  - Reduce basement backups

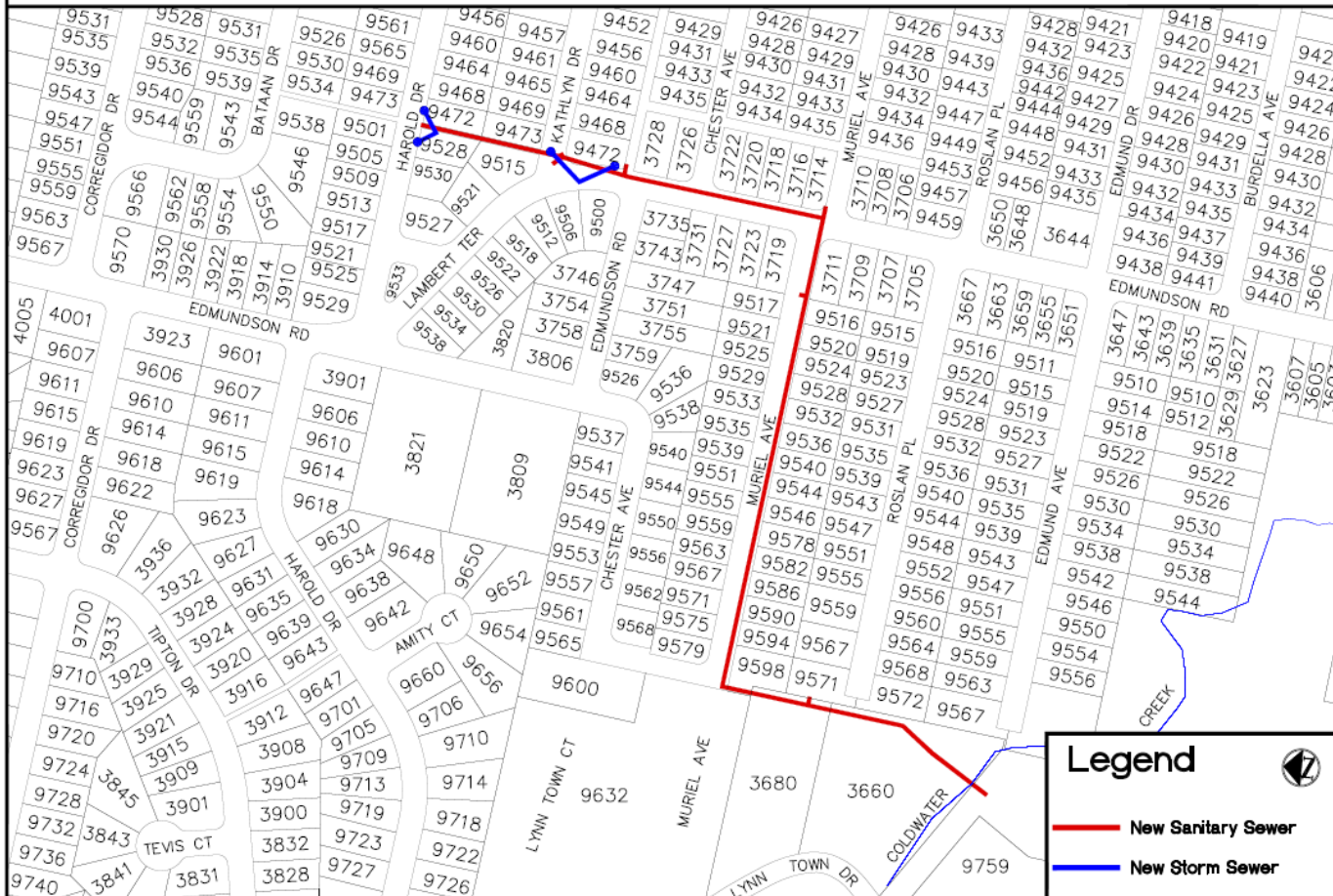




# Project Map



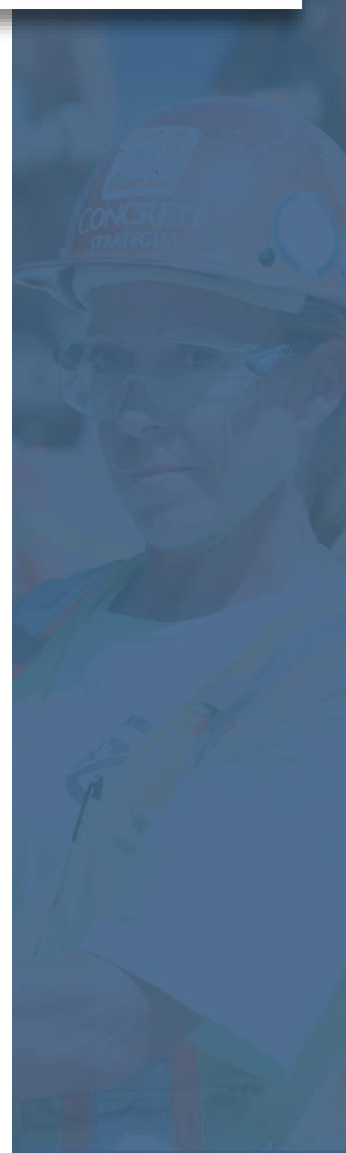
## Edmundson Sanitary Relief (Edmund Ave to Bataan Dr) (12159)



# Tentative Construction Schedule

- **Start:** Spring 2024
- **End:** Summer 2025

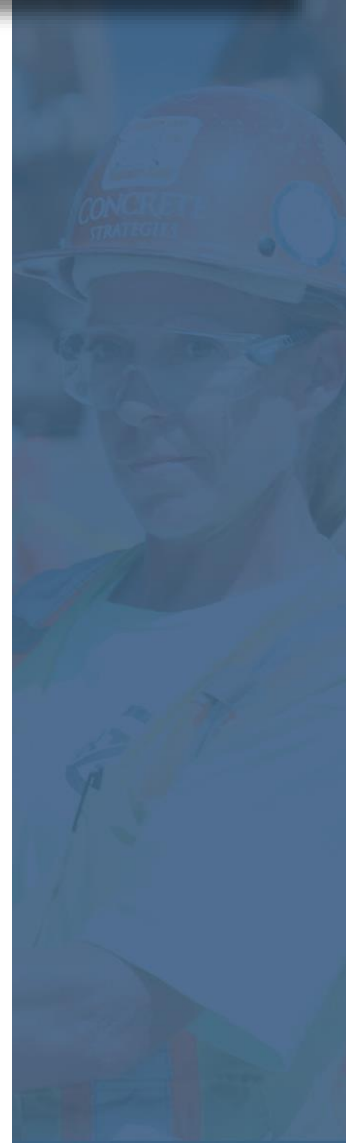
*Construction schedule is subject to change based on weather, utility conflicts, supply chain problems, and other unforeseen issues.*





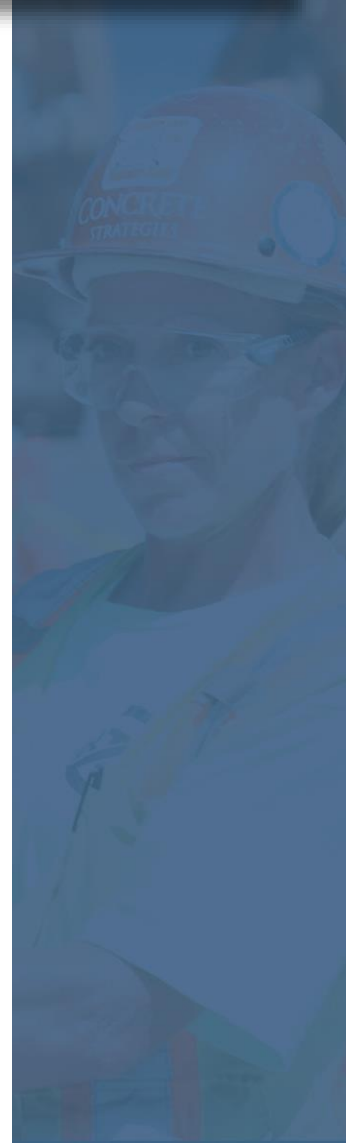
# Previous Public Engagement

- October 2021 – Neighborhood Public Meeting



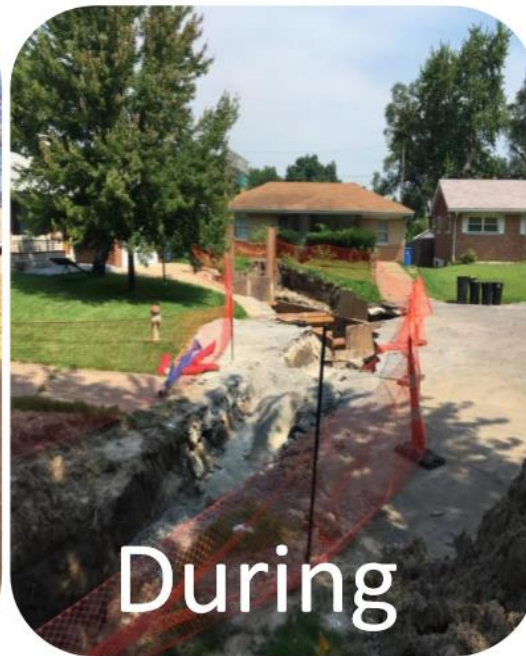
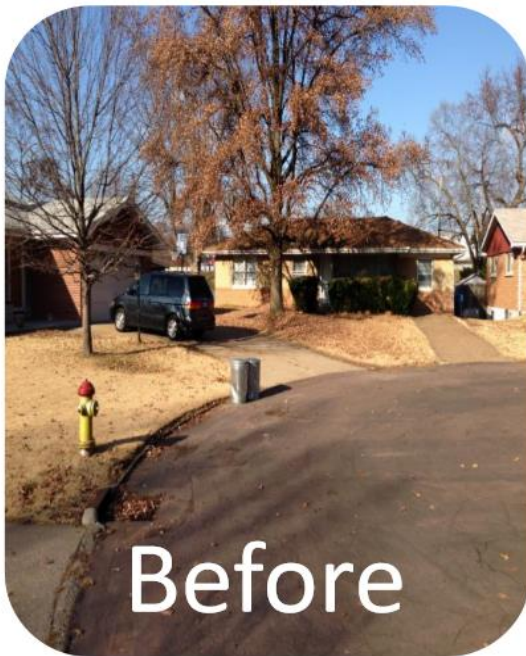
# What can residents expect?

- Trenches or “open-cut” excavation
- Tunneling under Kathlyn and Harold Drive
- Construction during normal business hours
- Temporary access restrictions to residential properties
- Contractor will notify property owners before access restrictions



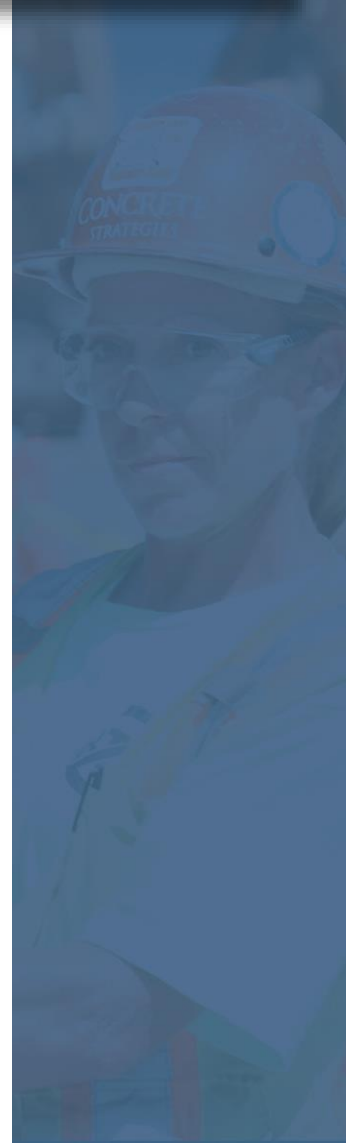
# How will it look when construction is finished?

- Trenches backfilled soon after pipe is installed
- Roadway and sidewalk restoration
- Private property restoration



## FAQs

- Will this work disrupt sewer or other utility services?
- Will construction affect access to my property?
- Will trees be removed as part of this project?
- Will emergency vehicles still have access to my property during construction?



# Questions?

**Andy Day (MSD Project Manager)**

aday@stlmsd.com

314-768-2799

**Paul Warner (Gershenson)**

paul@gershenson.com

636-549-0222

[MSDprojectclear.org/12159](http://MSDprojectclear.org/12159)

