

Normandie Sanitary Relief (12360) Virtual Town Hall

June 13, 2024

Today's Roadmap

- Technology Overview and Ground Rules
- Overview of MSDPC
- Project Overview and Specifics
- FAQs
- Q&A

Notes on our Virtual Town Hall Platform

- Participants are in listen-and-view mode
- There are several ways to engage
 - Type your question using Q/A icon at the bottom of your screen at any time (even before the Q/A portion has begun)
 - Everyone can read all questions posed and you can “Upvote” questions you want answered

MSD Project Clear (MSDPC) Overview & Details

- Government Utility
 - State Constitution
 - Voter Approved Charter in 1954
 - 6 Member Board of Trustees (3 City & 3 County)
- Two utilities: Wastewater & Stormwater
- 520 square mile service area
 - All of St. Louis City
 - 87% of St. Louis County
- ~1,300,000 customers
- 88 municipalities served
- 7 Treatment Plants
- 350+ million gallons per day of wastewater treated
- 4,700+ miles of wastewater sewers
- 1,800+ miles of combined sewers
- 3,000+ miles of stormwater sewers
- 4th largest sewer system in the United States (as measured by miles of sewers handling wastewater)



Normandie Sanitary Relief (12360)

Mark Dietiker (MSD Project Manager)

mdietiker@stlmsd.com

314-768-6380

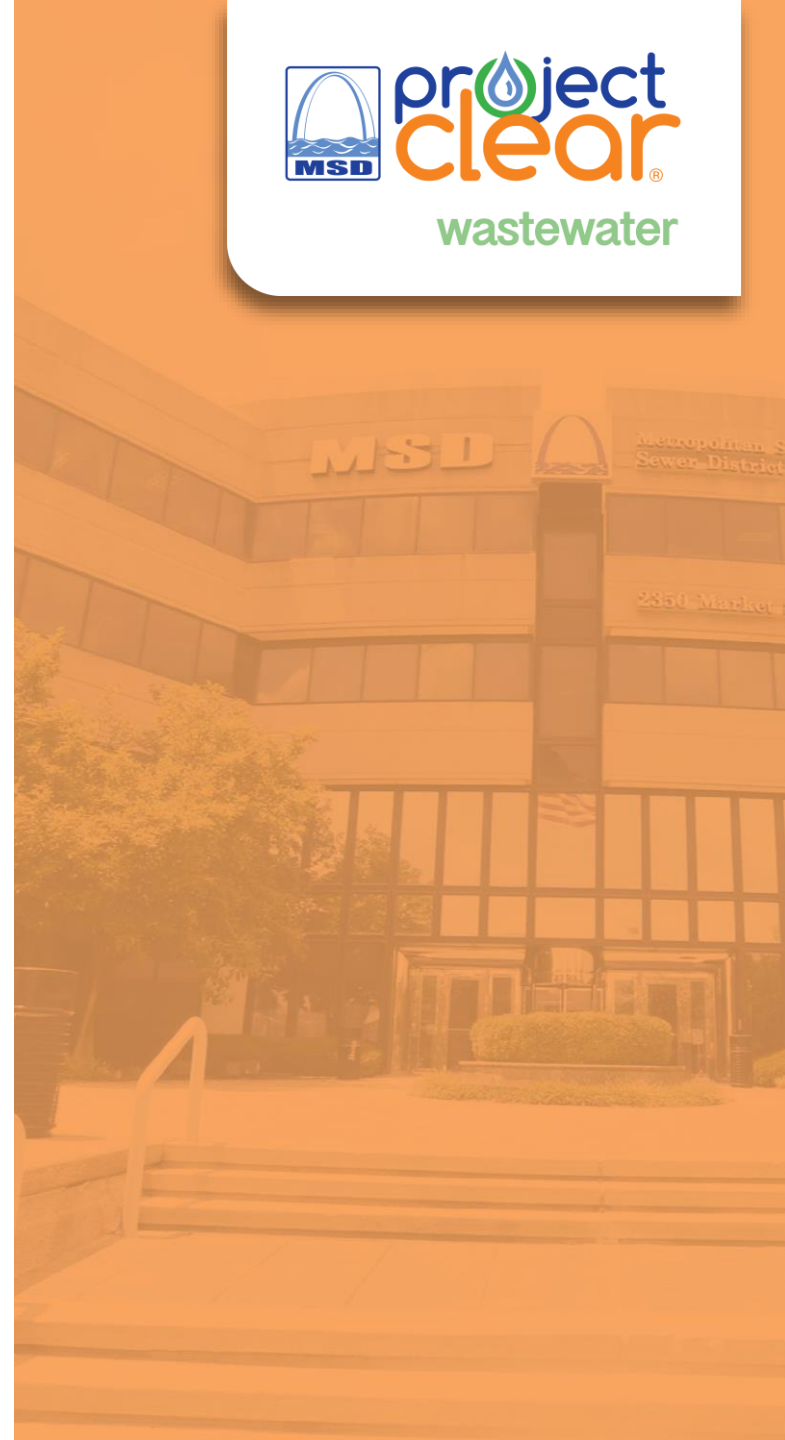
Kevin Bielicki (J.H. Berra)

kbielicki@jhberra.com

314-744-1589

Lamar Mosley (MSD Inspector)

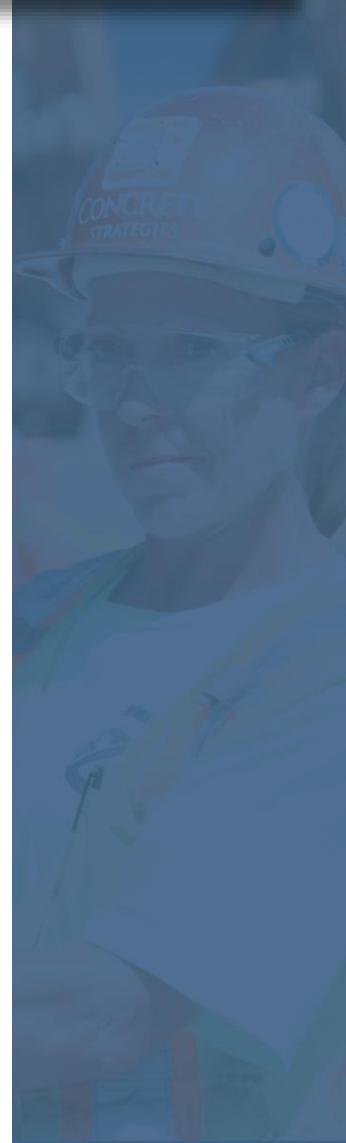
314-448-6462



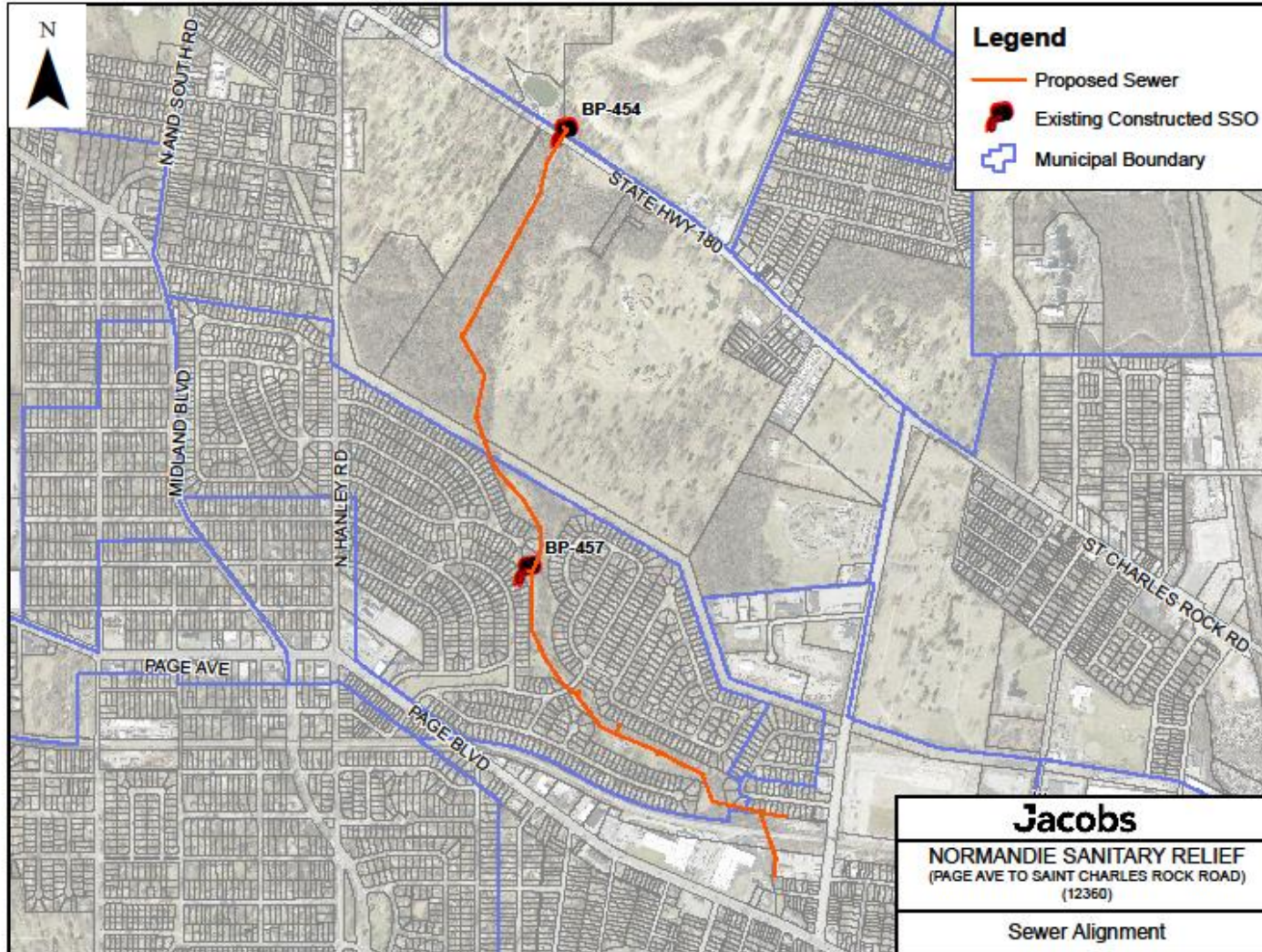
Project Overview



- General Goal
 - Increase the capacity of the sewer in this area
- Project Scope
 - Replace approximately 9,000 feet of sewer with larger pipe 30-54" in diameter
- Benefits
 - Reduce basement backups
 - Eliminate 2 sanitary sewer overflow (SSO) points



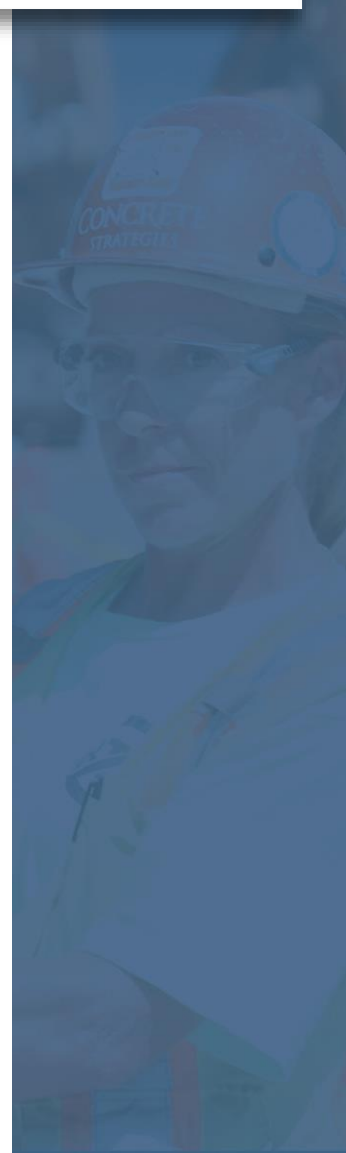
Project Map



Tentative Construction Schedule

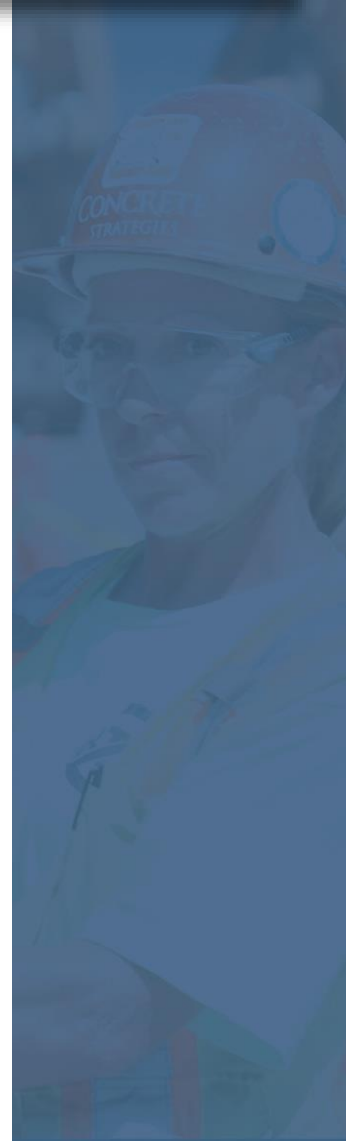
- **Start:** Summer 2024
- **End:** Summer 2027

Construction schedule is subject to change based on weather, utility conflicts, supply chain problems, and other unforeseen issues.



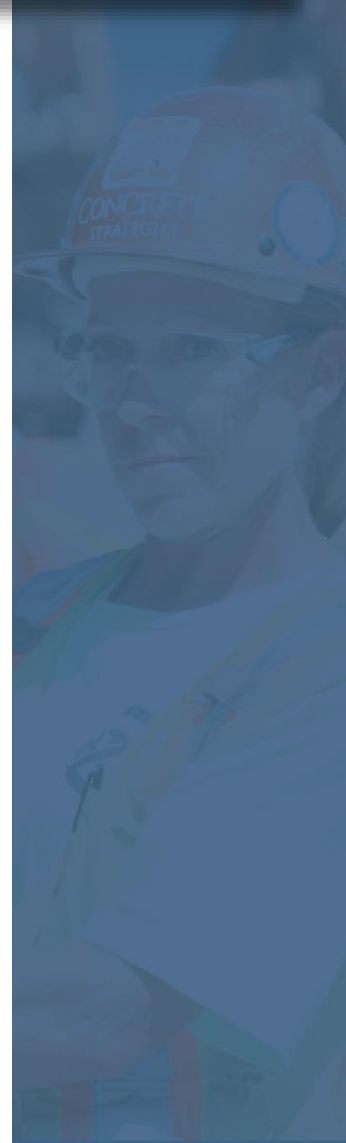
Previous Public Engagement

- April 2023 – Neighborhood Public Meeting



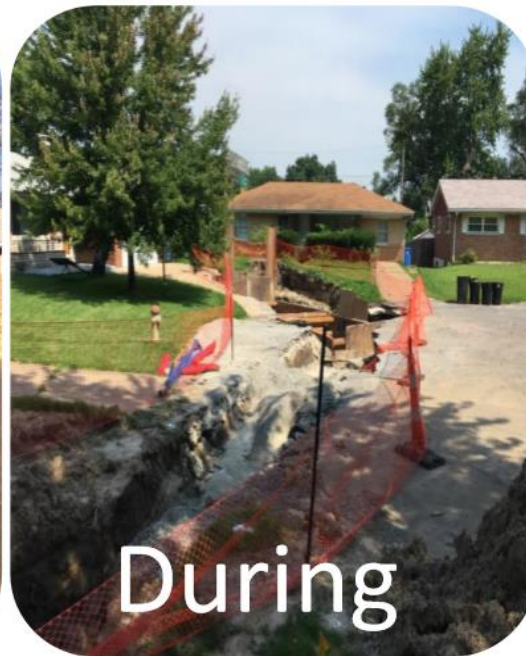
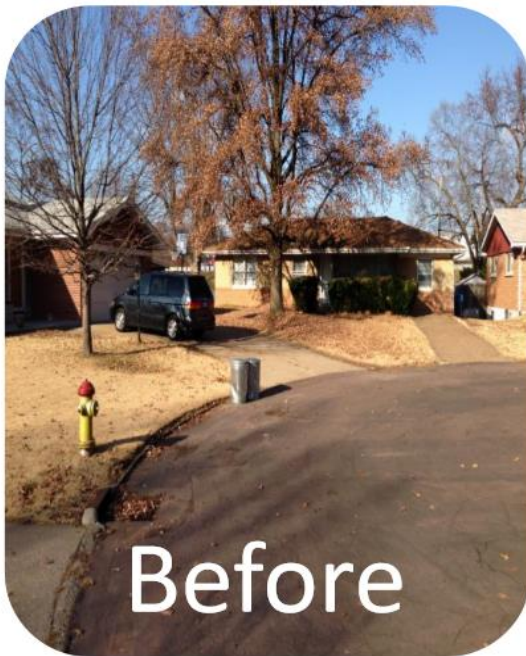
What can residents expect?

- Trenches or “open-cut” excavation
- Tunneling
- Construction during normal business hours
- Temporary access restrictions to residential properties
- Contractor will notify property owners before access restrictions



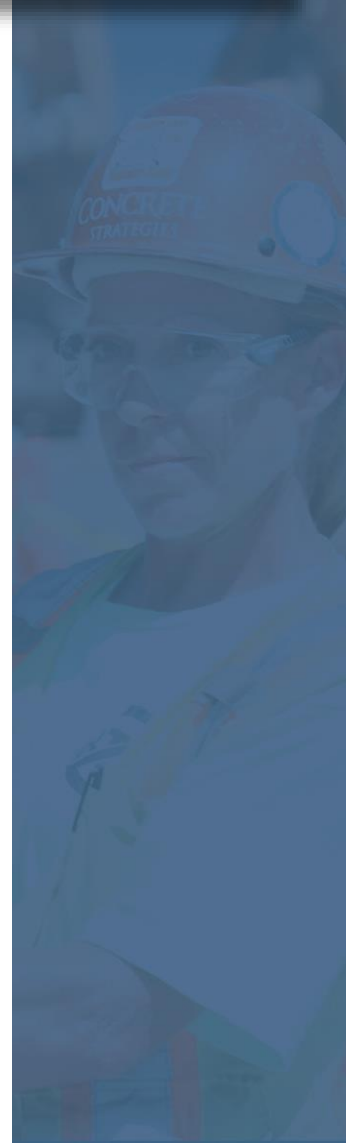
How will it look when construction is finished?

- Trenches backfilled soon after pipe is installed
- Roadway and sidewalk restoration
- Private property restoration



FAQs

- Will this work disrupt sewer or other utility services?
- Will construction affect access to my property?
- Will trees be removed as part of this project?
- Will emergency vehicles still have access to my property during construction?





Questions?

Mark Dietiker (MSD Project Manager)

mdietiker@stlmsd.com

314-768-6380

Kevin Bielicki (J.H. Berra)

kbielicki@jhberra.com

314-744-1589

Lamar Mosley (MSD Inspector)

314-448-6462

MSDprojectclear.org/12360

