

# Conway Meadows Sanitary Relief (12129) Virtual Town Hall



November 12, 2024

# Agenda



**Technology Overview & Ground Rules**



**Overview of MSD Project Clear**



**Project Overview**



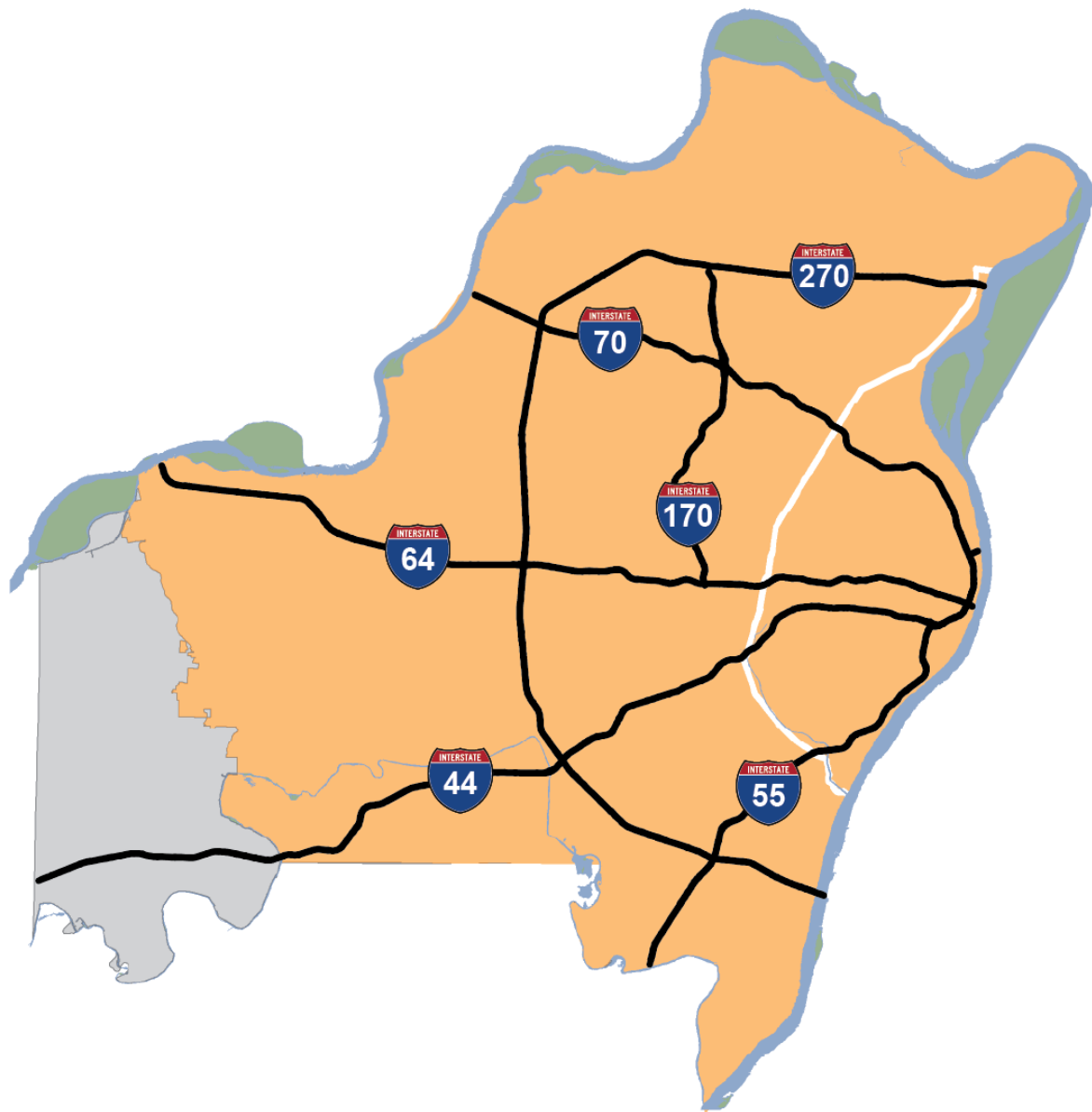
**FAQs**



**Q&A**

# Virtual Town Hall Platform

- Participants are in listen-and-view mode.
- There are several ways to engage:
  - Type your question using the Q/A icon on your menu bar at any time (even more the Q&A portion has begun)
  - Everyone can read all questions posed and you can “upvote” questions you want answered



**520**

**SQUARE MILE SERVICE AREA**



**4<sup>TH</sup>**

**LARGEST SYSTEM IN THE U.S.**



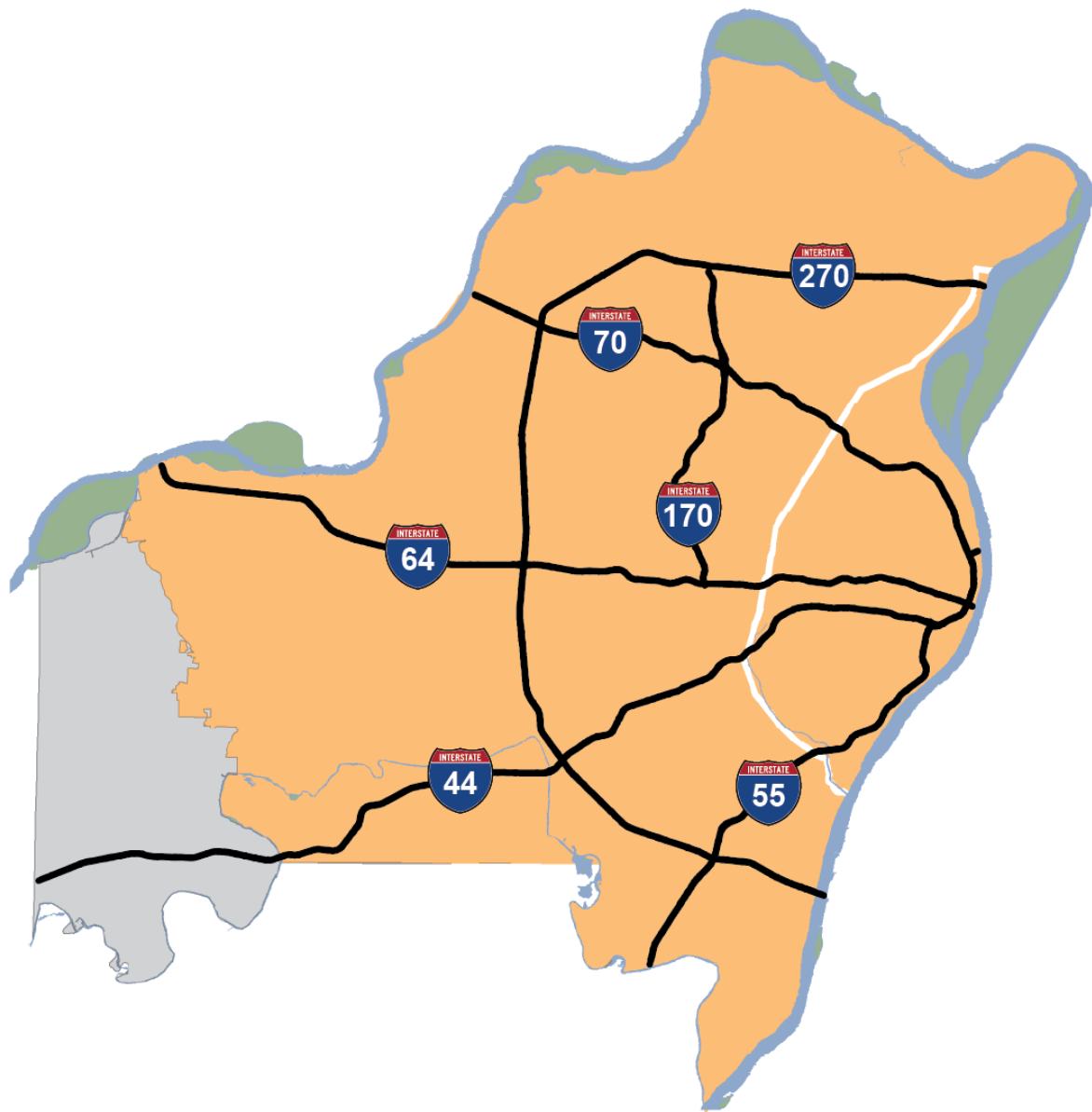
**1.3 MILLION**

**CUSTOMERS**



**87**

**MUNICIPALITIES**



**>350M**  
**GALLONS TREATED/DAY**



**10,000**  
**MILES OF SEWERS**



**345,000**  
**MANHOLES AND INLETS**



**7**  
**TREATMENT FACILITIES**

# Conway Meadows Sanitary Relief (12129)

**Jared Barr**  
MSD, Project Manager



**314-335-2063**



**[jbarr@stlmsd.com](mailto:jbarr@stlmsd.com)**

**Kurt Kutter**  
Cole, Project Manager



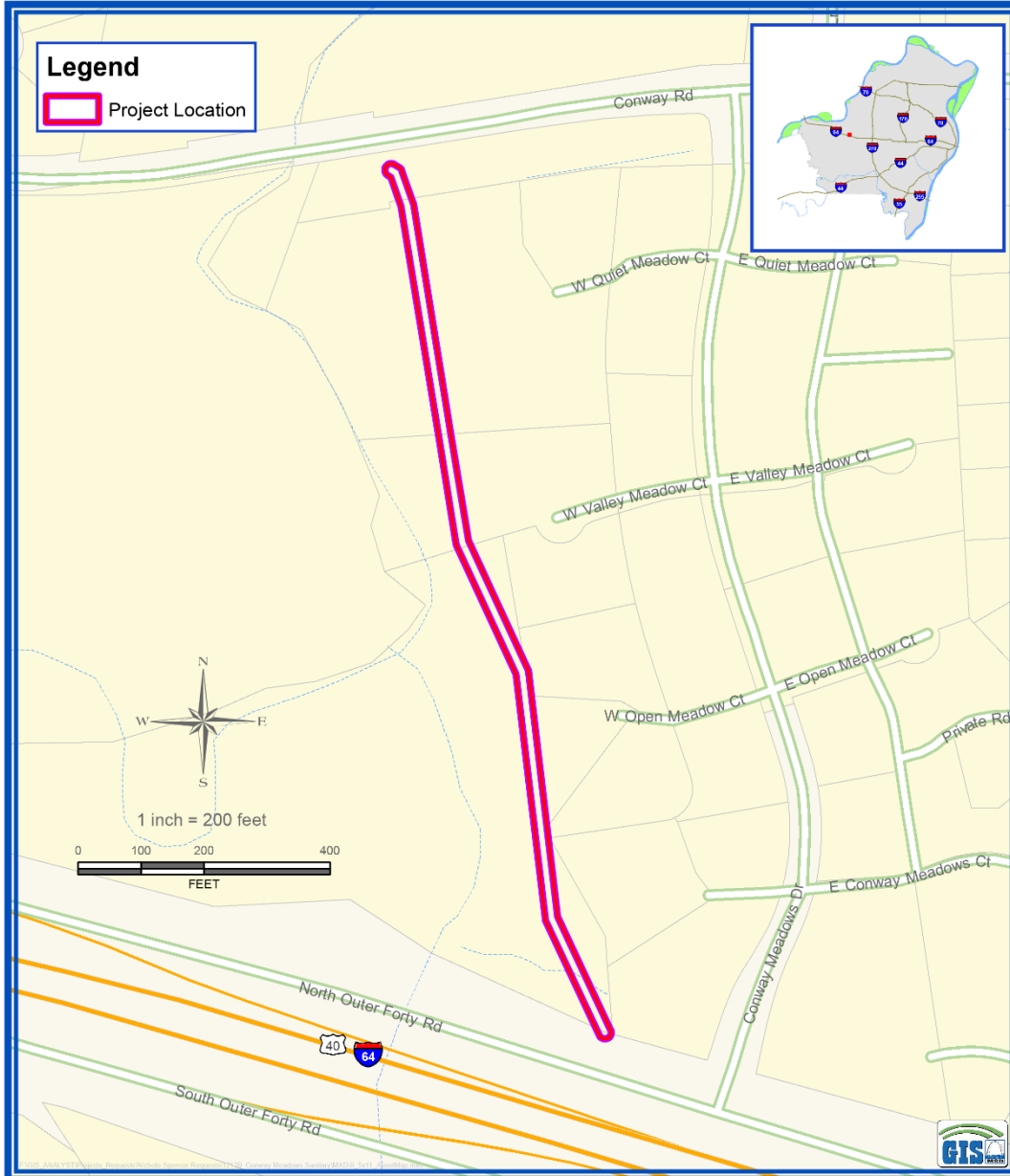
**314-759-0770**



**[kkutter@colestl.com](mailto:kkutter@colestl.com)**

# Project Overview

- General Goal
  - Increase the capacity of the wastewater sewer in this area
  - Reduce basement backups
  - Reduce wastewater overflows
- Project Scope
  - Replace approximately 1,400 feet of wastewater pipe
  - Increase pipe size to 18-24"
- Benefits
  - Fewer basement backups
  - Cleaner waterways



## Project Map

- Design completion: Fall 2024
- Easement acquisition completion: Fall 2025
- Estimated construction start: Spring 2026
- Estimated duration: 12 months

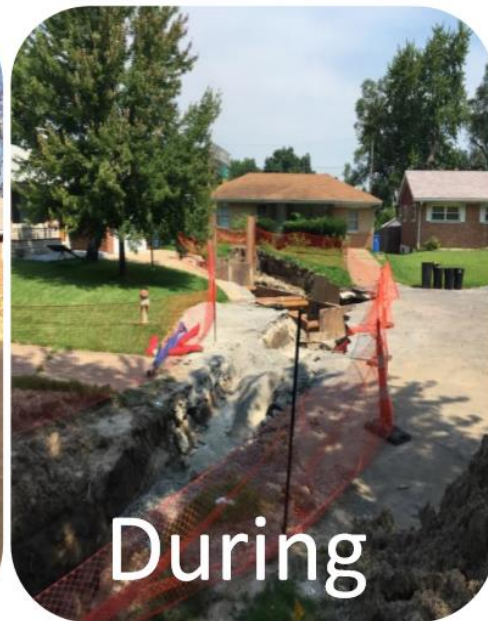
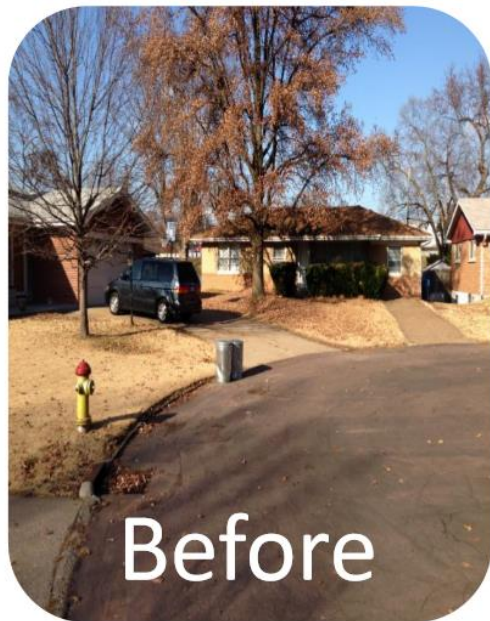


# What can residents expect?

- Trenches or “open-cut” excavation
- Tunneling
- Construction noise during normal business hours
- Traffic control plan and access issues
  - Lane and road closures will temporarily affect traffic
  - Temporary access restrictions to residential properties
  - Contractor will notify property owners before access restrictions

# How will it look when construction is finished?

- Trenches backfilled soon after pipe is installed
  - Roadway and sidewalk restoration
- Private property restoration per easement



# Frequently Asked Questions

- Will this work disrupt sewer or other utility services?
- Will trees be removed as part of this project?
- Will construction affect access to my driveway?
- Will emergency vehicles have access to my property during construction?

# Questions?

**Jared Barr**  
**MSD, Project Manager**



**314-335-2063**



**[jbarr@stlmsd.com](mailto:jbarr@stlmsd.com)**

**Kurt Kutter**  
**Cole, Project Manager**



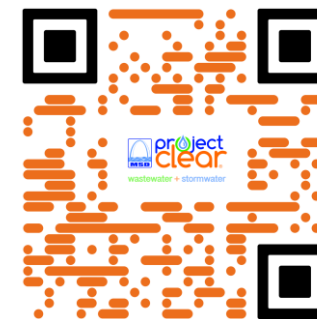
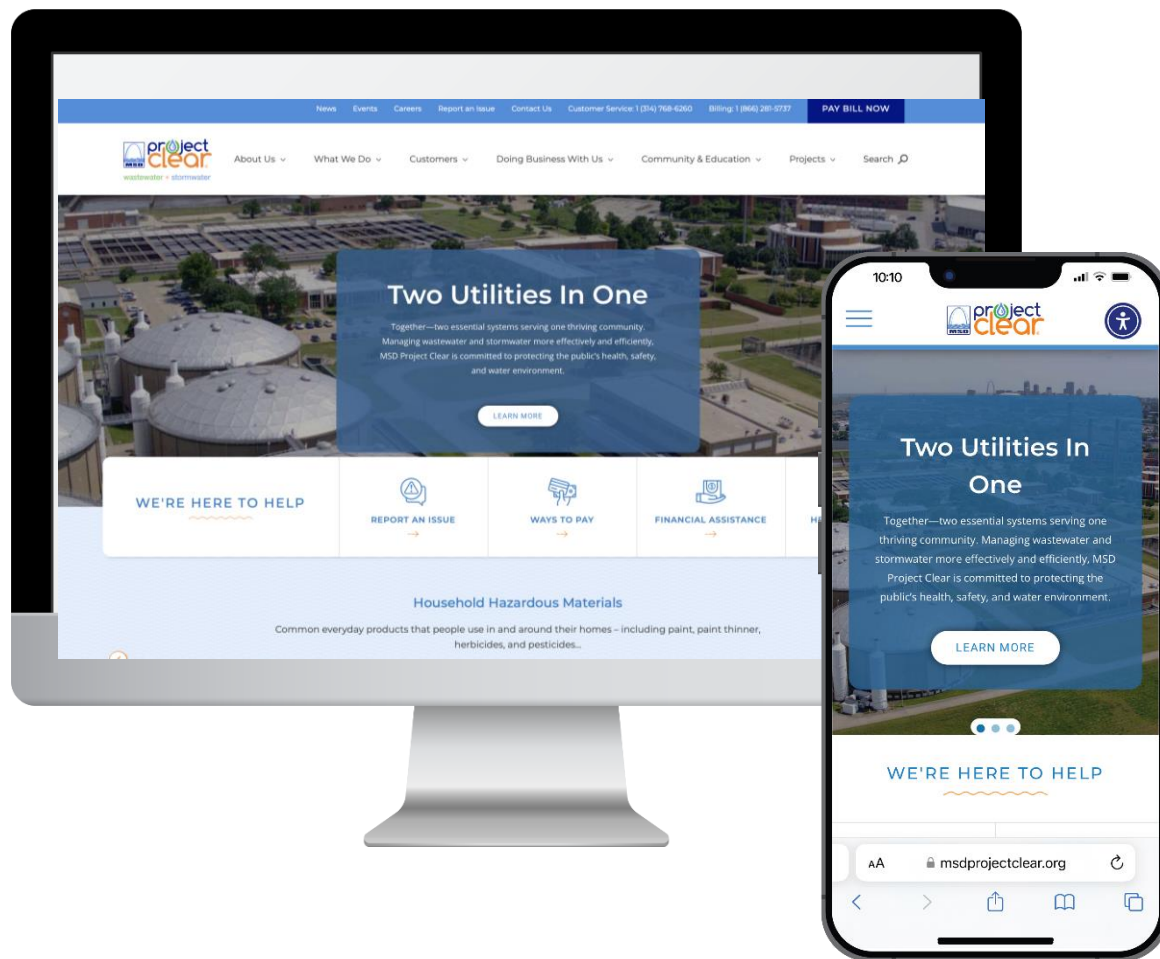
**314-759-0770**



**[kkutter@colestl.com](mailto:kkutter@colestl.com)**

**[MSDProjectClear.org/12129](https://MSDProjectClear.org/12129)**

# Thank You!



[MSDProjectClear.org](https://MSDProjectClear.org)

(314) 768-6260



@MSDProjectClear



Metropolitan St. Louis Sewer District