

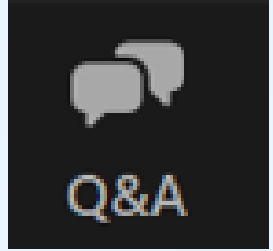


Metropolitan St. Louis Sewer District Solid Management Upgrades: Bissell



Welcome! We're glad you are here.

Notes on participating in our Virtual Meeting

- Participants are in listen-and-view mode
- There are several ways to engage
 - Type your question using the Q&A icon at the bottom of your screen at any time (even before the Q/A portion has begun) 
The icon is a black square with two white speech bubbles and the text 'Q&A' below them.
 - Everyone can read all questions posed and you can “Upvote” questions you want answered



TODAY'S SPEAKERS

Bess McCoy, Manager of Public Affairs
MSD Project Clear

Nick Kampwerth, P.E., Construction Project Manager
Kokosing/Plocher



AGENDA



MSD Overview



Solids Management Upgrade Project



**What to Expect at Bissell
Q&A**

MSD Overview

- Public wastewater and stormwater utility
- 4th largest wastewater/stormwater system in the nation
- 600 square mile service area
- 1.3 million customers
- ~1,000 employees
- 6-member Board of Trustees

Solids Management Upgrade Project

About the upgrades

Through a series of steps during the wastewater treatment process, liquid waste is separated from solid waste, which is eventually incinerated.

Improvements will replace century-old incineration technology with innovative, more environmentally friendly systems.

The result will be cleaner air and more efficient operations and maintenance.

MSDPC SOLIDS MANAGEMENT UPGRADES BY THE NUMBERS*:



reduction in air emissions that already meet or exceed air quality standards

200
NEW JOBS

during construction plus ongoing high-tech jobs upon completion



\$2 MILLION

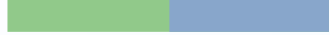
annual savings in operations and maintenance costs

** Figures reflect impact of improvements at both Bissell and Lemay Wastewater Treatment Plants.*

About the Bissell Wastewater Treatment Plant

- Before MSD Project Clear took over the plant in 1970, untreated wastewater went directly into the Mississippi River.
- The plant treats 120 million gallons of wastewater per day on average with peak wet weather capacity of 350 million gallons per day.
- Through its history, the Bissell WWTP has been improved to take advantage of new technology and respond to new regulations. The water coming out of the plant after treatment is cleaner than it's ever been.





Solids Management Upgrade Project: Bissell

Work Involved: View of existing site with rendering of new Solids Handling Building (orange oval)



Solids Management Upgrade Project: Bissell

Work involved: What the public will see

Construction will take place on MSD property other than minor off-site utility work.

Construction will include:

1. Demolition of existing Storage Tanks (completed).
2. Building a new Solids Processing Building (underway, complete Fall 2026).
3. Demolish the existing Solids Processing Building (construction anticipated from Spring 2028 to Summer 2028).

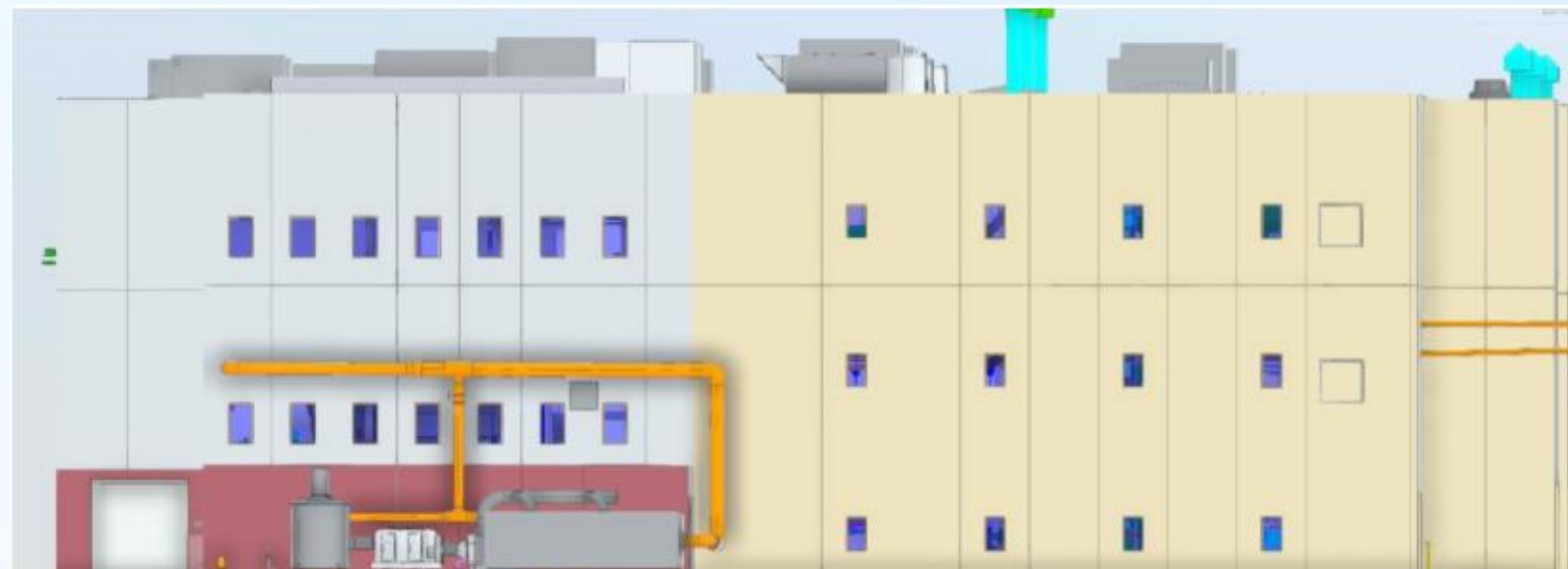


Solids Management Upgrade Project: Bissell

Work involved: Local impacts

- Increased truck traffic, primarily impacting Hall St.
- Noise of equipment working. Standard hours for construction are 7a-3:30p Monday through Friday.
- Staging of equipment at various locations on the site.
- No more smoke stacks!

Site work is underway. Construction began this spring and will continue through fall 2028.





Thank you!

We appreciate your interest and look forward to bringing this updated plant into service for the community.

PROJECT CONTACTS

Bess McCoy, Manager of Public Affairs
MSD Project Clear
314.768.6232
emccoy@msdstl.com

Nick Kampwerth, P.E., Construction Project Manager
Kokosing/Plocher
618.781.4082
nakampwerth@plocherco.com

www.msprojectclear.org/SMU