

TM-01 Two Mile Creek Outfall Sanitary Relief (12231) Virtual Town Hall



January 29, 2025

Agenda



Technology Overview & Ground Rules



Overview of MSD Project Clear



Project Overview



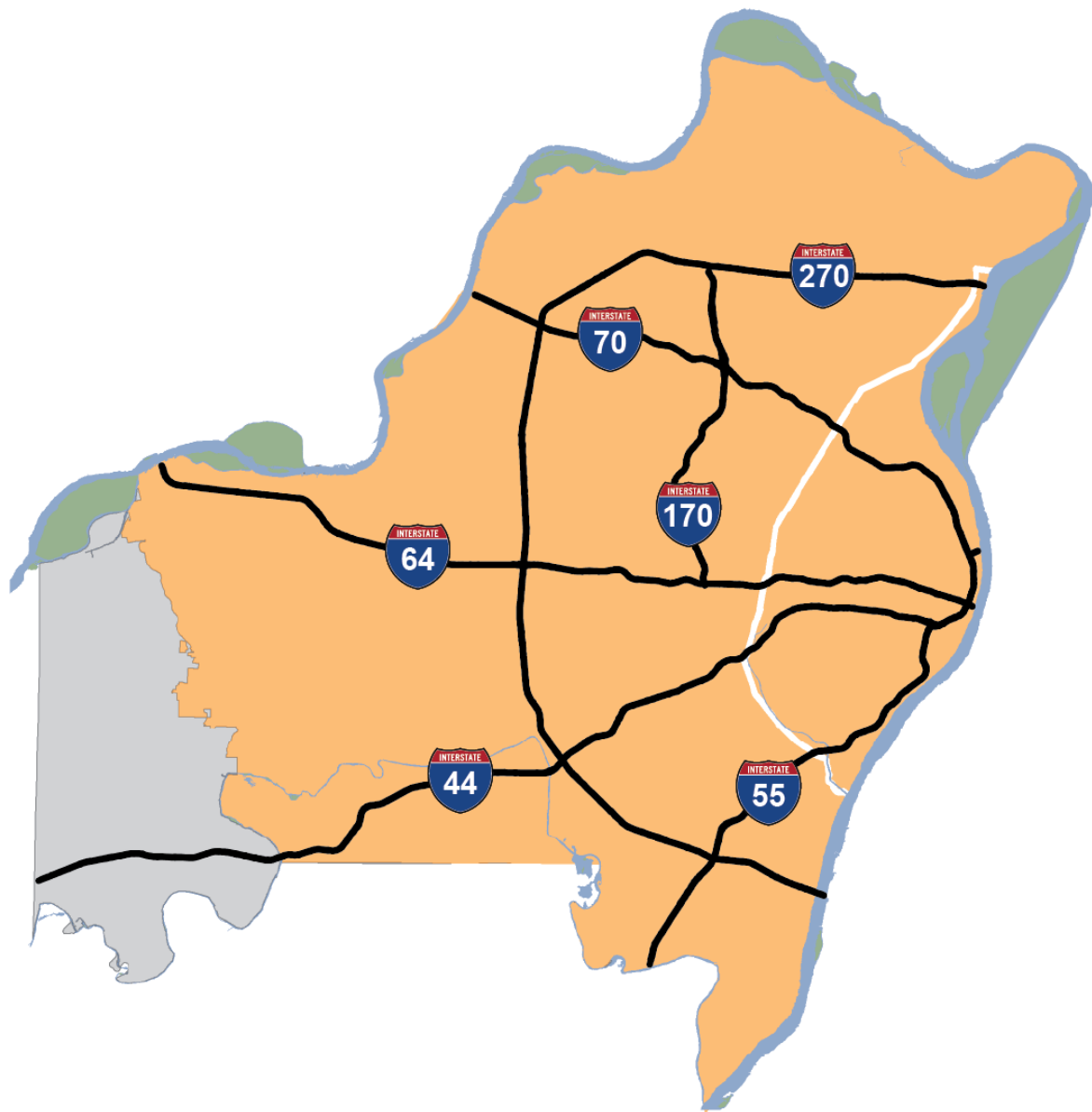
FAQs



Q&A

Virtual Town Hall Platform

- Participants are in listen-and-view mode.
- There are several ways to engage:
 - Type your question using the Q/A icon on your menu bar at any time (even more the Q&A portion has begun)
 - Everyone can read all questions posed and you can “upvote” questions you want answered



520

SQUARE MILE SERVICE AREA



4TH

LARGEST SYSTEM IN THE U.S.



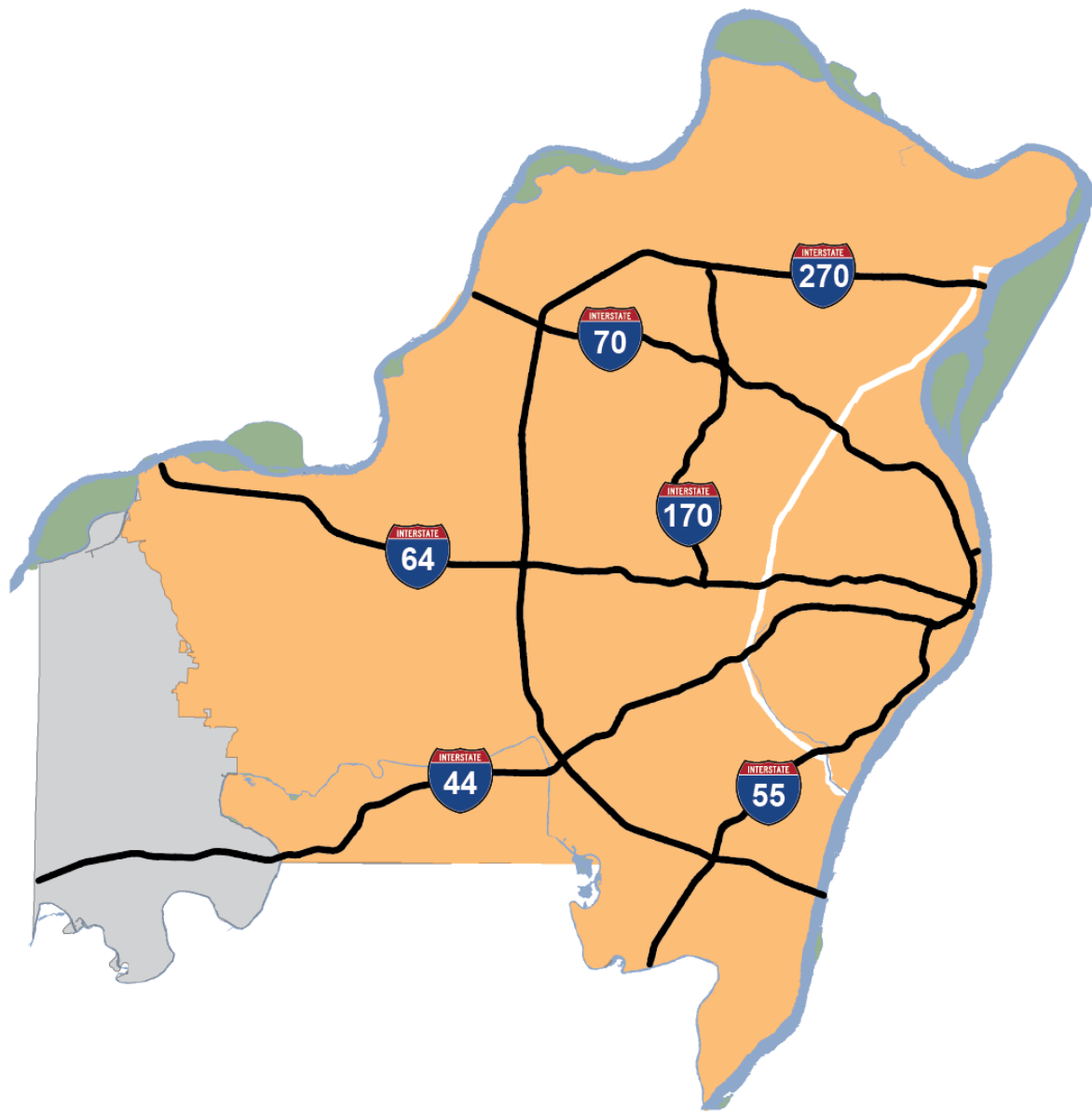
1.3 MILLION

CUSTOMERS



87

MUNICIPALITIES



>350M
GALLONS TREATED/DAY



10,000
MILES OF SEWERS



345,000
MANHOLES AND INLETS



7
TREATMENT FACILITIES

TM-01 Two Mile Creek Outfall Sanitary Relief (12231)

Mark Dietiker
MSD, Project Manager

 **314-768-6380**

 **mdietiker@stlmsd.com**

Faz Mozaffari
MSD, Inspector

 **314-940-4295**

 **fmozaffari@stlmsd.com**

Kris Bates
Bates Utility, Project Manager

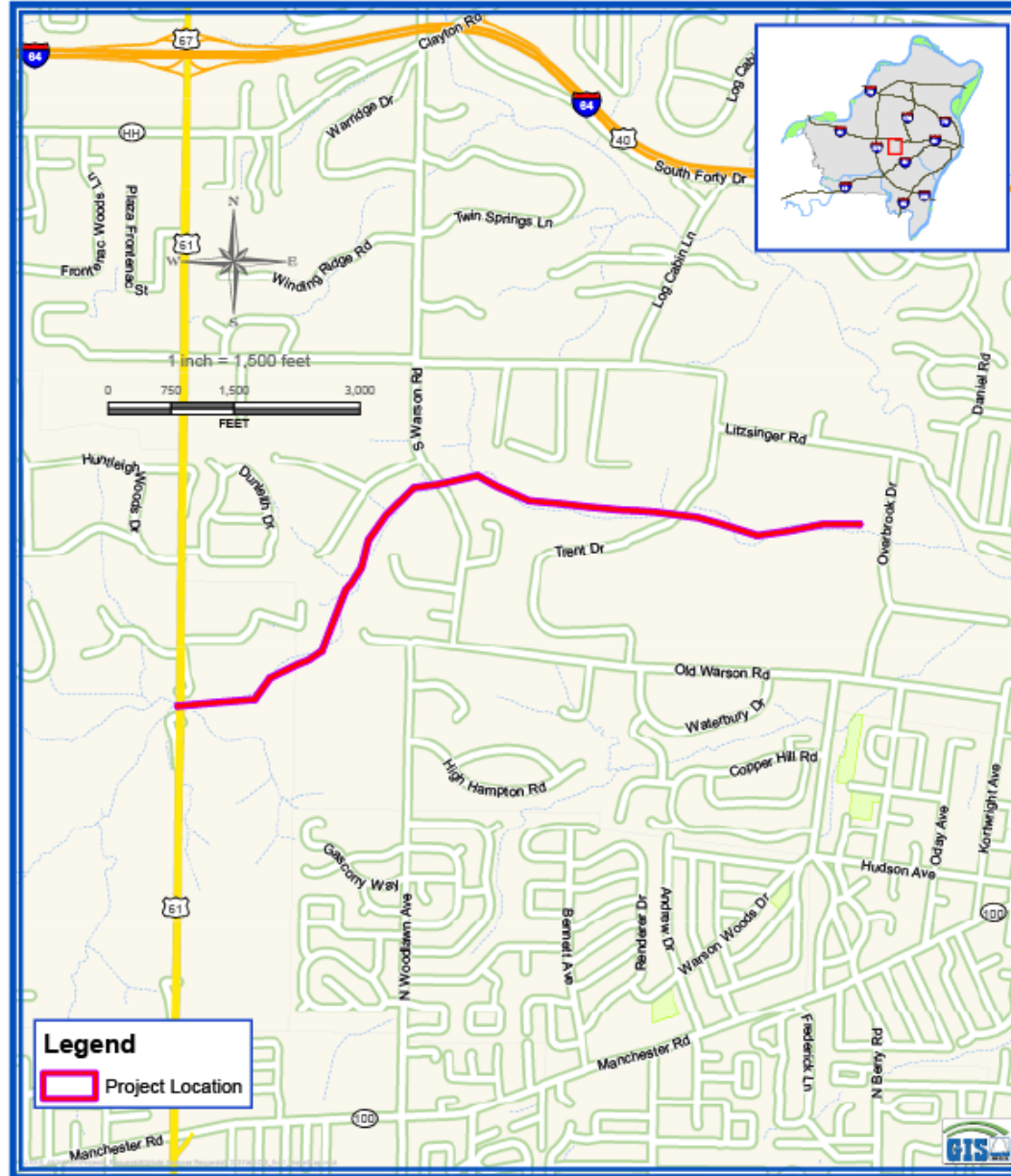
 **636-939-5628**

 **krisbates@batesutility.com**

Project Overview

- General Goal
 - Increase the capacity of the wastewater sewer in this area
- Project Scope
 - Replace approximately 11,400 feet of wastewater pipe
 - Increase pipe size to between 8-48"
- Benefits
 - Fewer basement backups

Two Mile Creek Outfall
Sanitary Relief (12231)



Tentative Construction Schedule

- **Start:** Summer 2025
- **End:** Spring 2029

Construction schedule is subject to change based on weather, utility conflicts, supply chain problems, and other unforeseen issues.

Previous Public Engagement

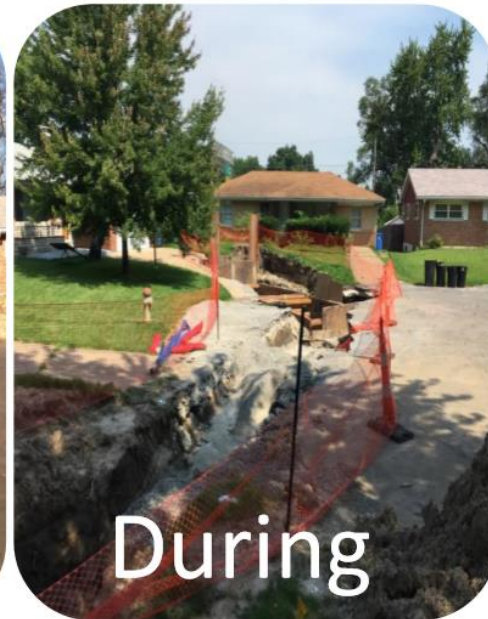
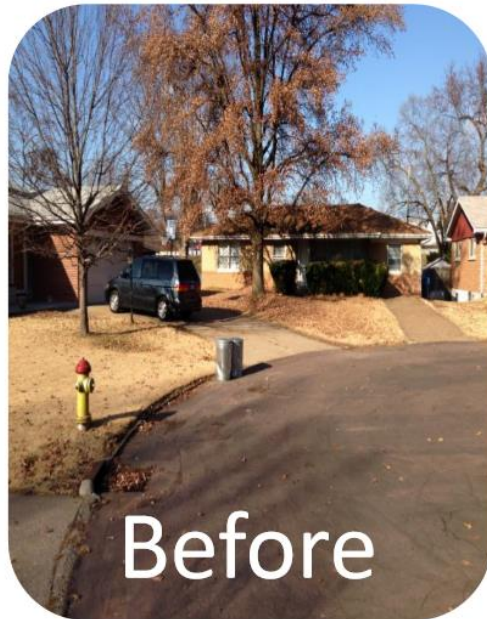
- May 2022 – Neighborhood Public Meeting

What can residents expect?

- Trenches or “open-cut” excavation
- Tunneling
- Construction noise during normal business hours
- Traffic control plan and access issues
 - Lane and road closures will temporarily affect traffic
 - Temporary access restrictions to residential properties
 - Contractor will notify property owners before access restrictions

How will it look when construction is finished?

- Trenches backfilled soon after pipe is installed
 - Roadway and sidewalk restoration
- Private property restoration per easement



Frequently Asked Questions

- Will this work disrupt sewer or other utility services?
- Will trees be removed as part of this project?
- Will construction affect access to my driveway?
- Will emergency vehicles have access to my property during construction?

TM-01 Two Mile Creek Outfall Sanitary Relief (12231)

Mark Dietiker
MSD, Project Manager

 **314-768-6380**

 **mdietiker@stlmsd.com**

Faz Mozaffari
MSD, Inspector

 **314-940-4295**

 **fmozaffari @stlmsd.com**

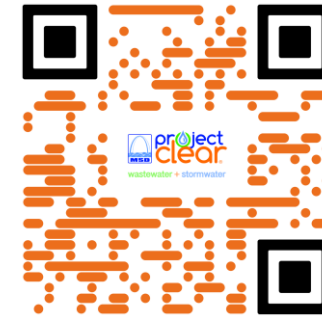
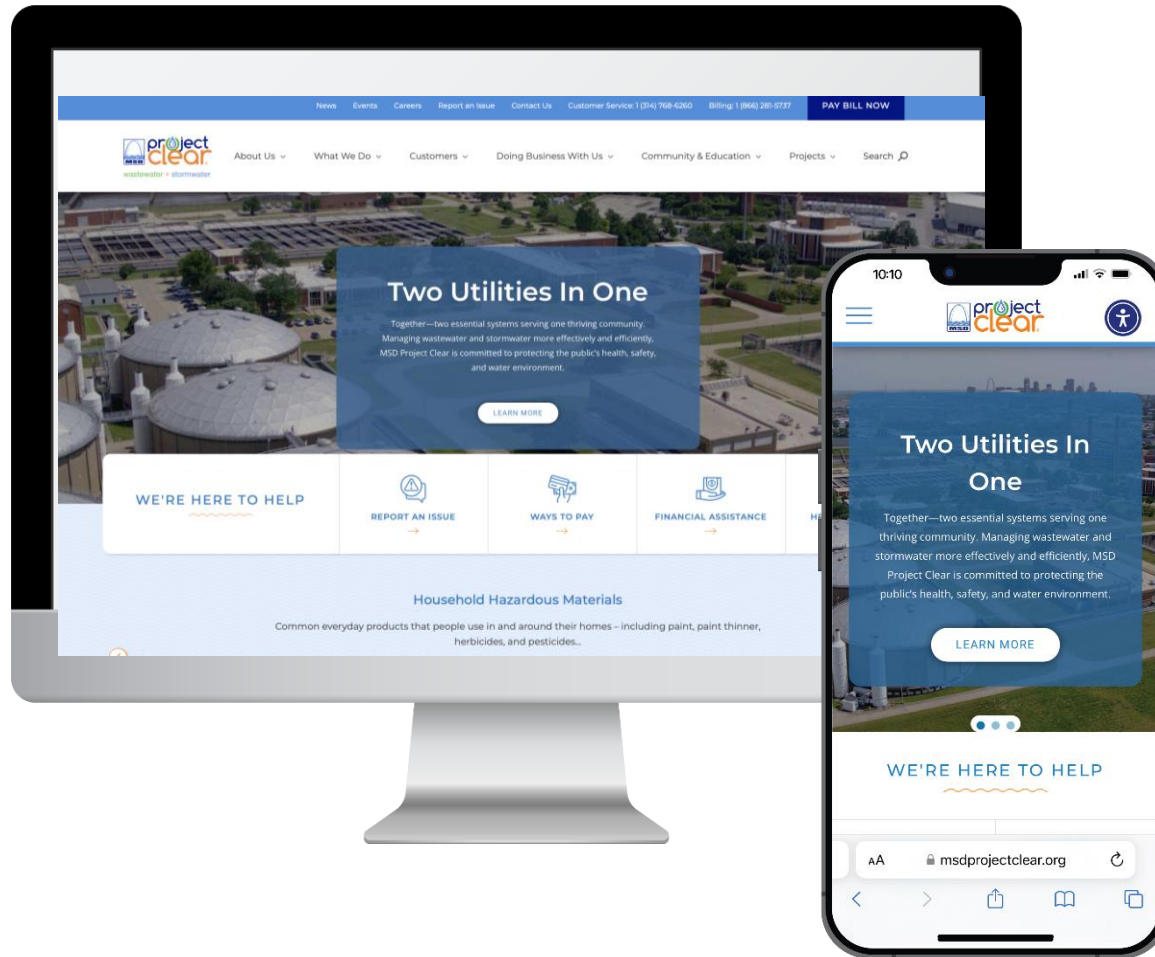
Kris Bates
Bates Utility, Project Manager

 **636-939-5628**

 **krisbates@batesutility.com**

MSDProjectClear.org/TM-01

Thank You!



MSDProjectClear.org

(314) 768-6260



@MSDProjectClear



Metropolitan St. Louis Sewer District