

# Black Creek-Haddington Court Relief Sewers (11847) Virtual Town Hall



April 24, 2025

# Agenda



**Technology Overview & Ground Rules**



**Overview of MSD Project Clear**



**Project Overview**



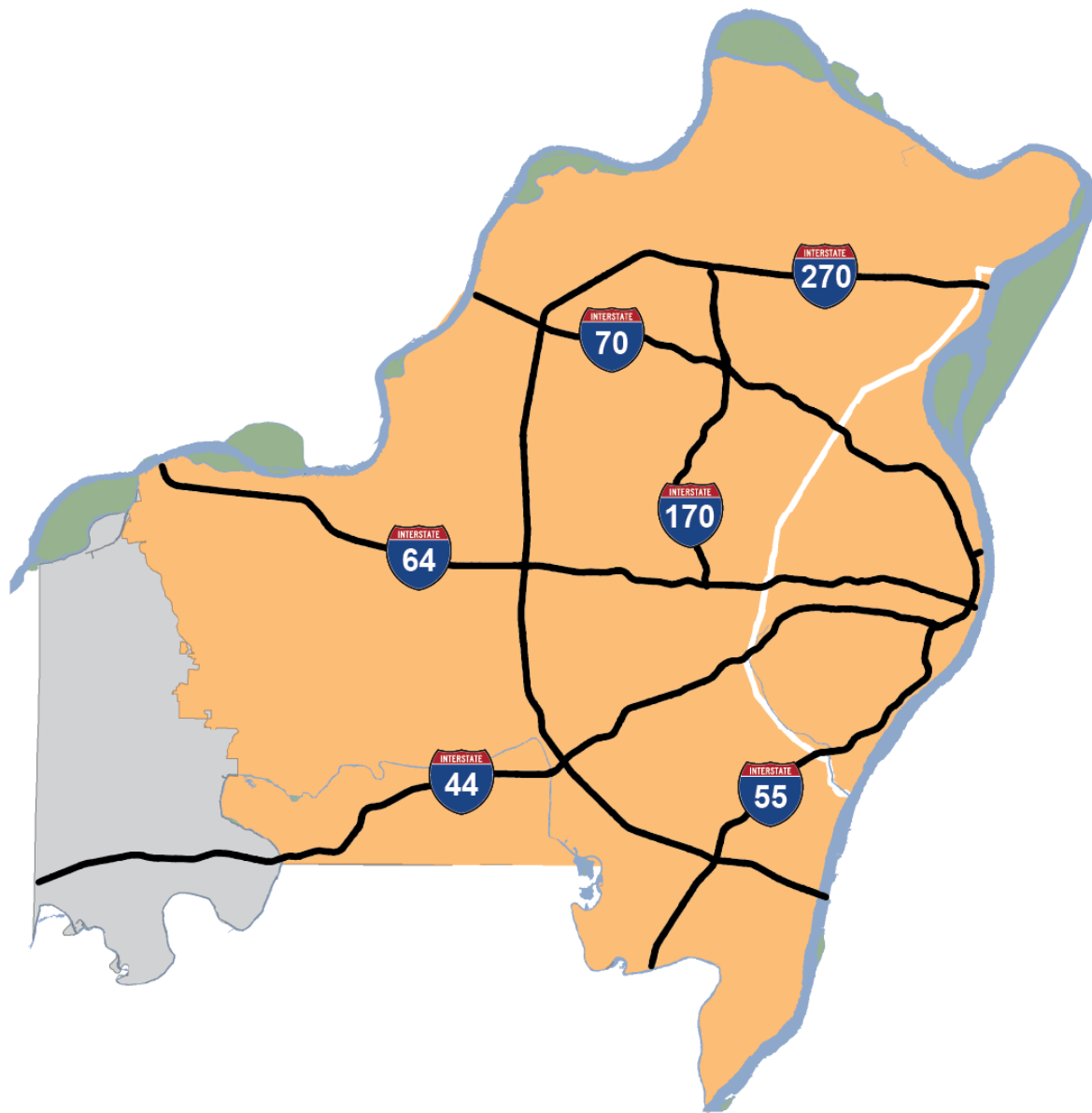
**FAQs**



**Q&A**

# Virtual Town Hall Platform

- Participants are in listen-and-view mode.
- There are several ways to engage:
  - Type your question using the Q/A icon on your menu bar at any time (even more the Q&A portion has begun)
  - Everyone can read all questions posed and you can “upvote” questions you want answered



**520**

**SQUARE MILE SERVICE AREA**



**4<sup>TH</sup>**

**LARGEST SYSTEM IN THE U.S.**



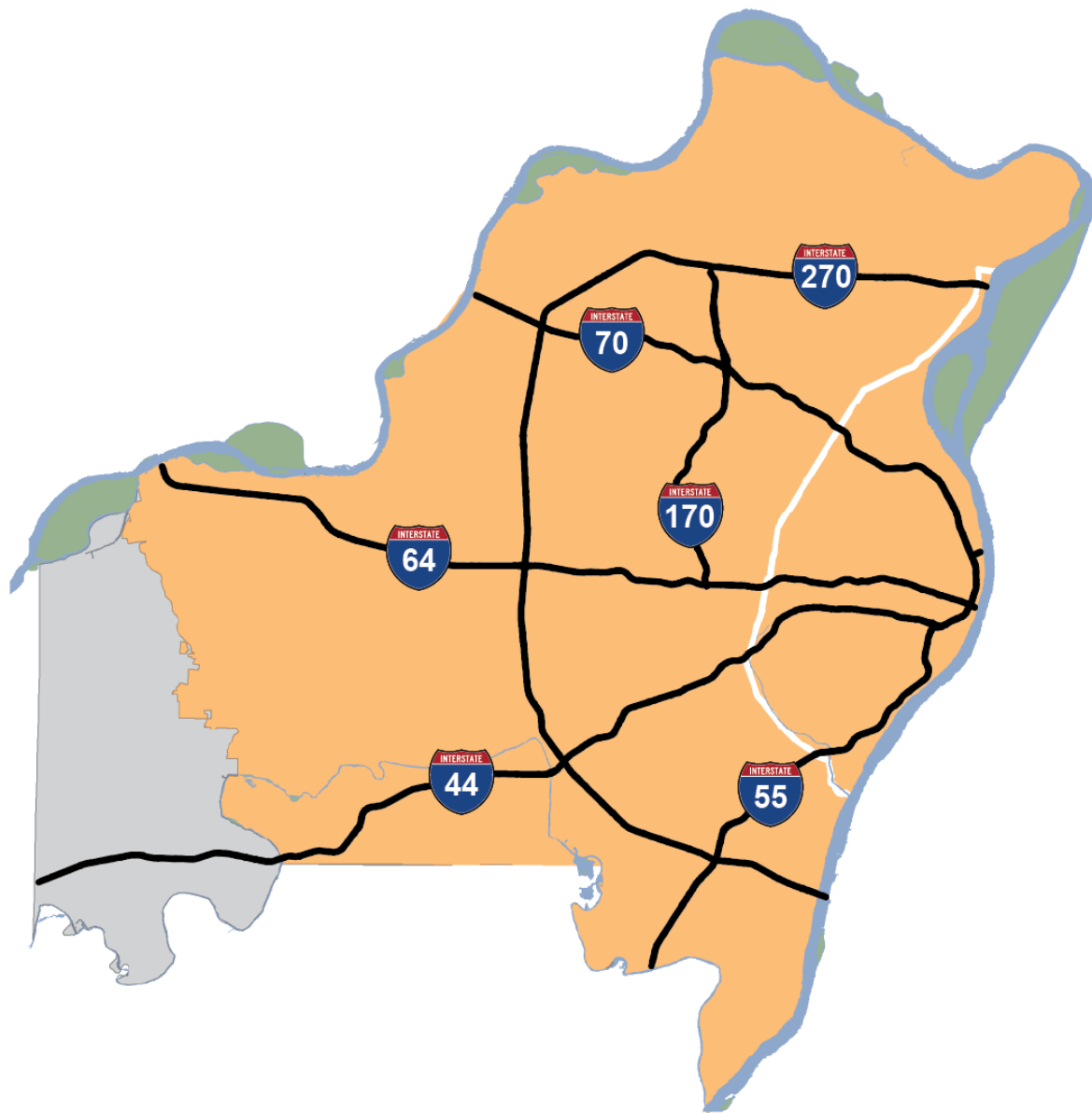
**1.3 MILLION**

**CUSTOMERS**



**87**

**MUNICIPALITIES**



**>350M**  
**GALLONS TREATED/DAY**



**10,000**  
**MILES OF SEWERS**



**345,000**  
**MANHOLES AND INLETS**



**7**  
**TREATMENT FACILITIES**

# Black Creek-Haddington Court Relief Sewers (11847)

**Vali Jo Hansen**  
MSD, Project Manager

 **314-335-2160**

 **vhansen@stlmsd.com**

**Dennis Perry**  
Bates Utility, Project Manager

 **636-939-5628**

 **dperry@batesutility.com**

**Cary Duchene**  
Black & Veatch, Construction Manager

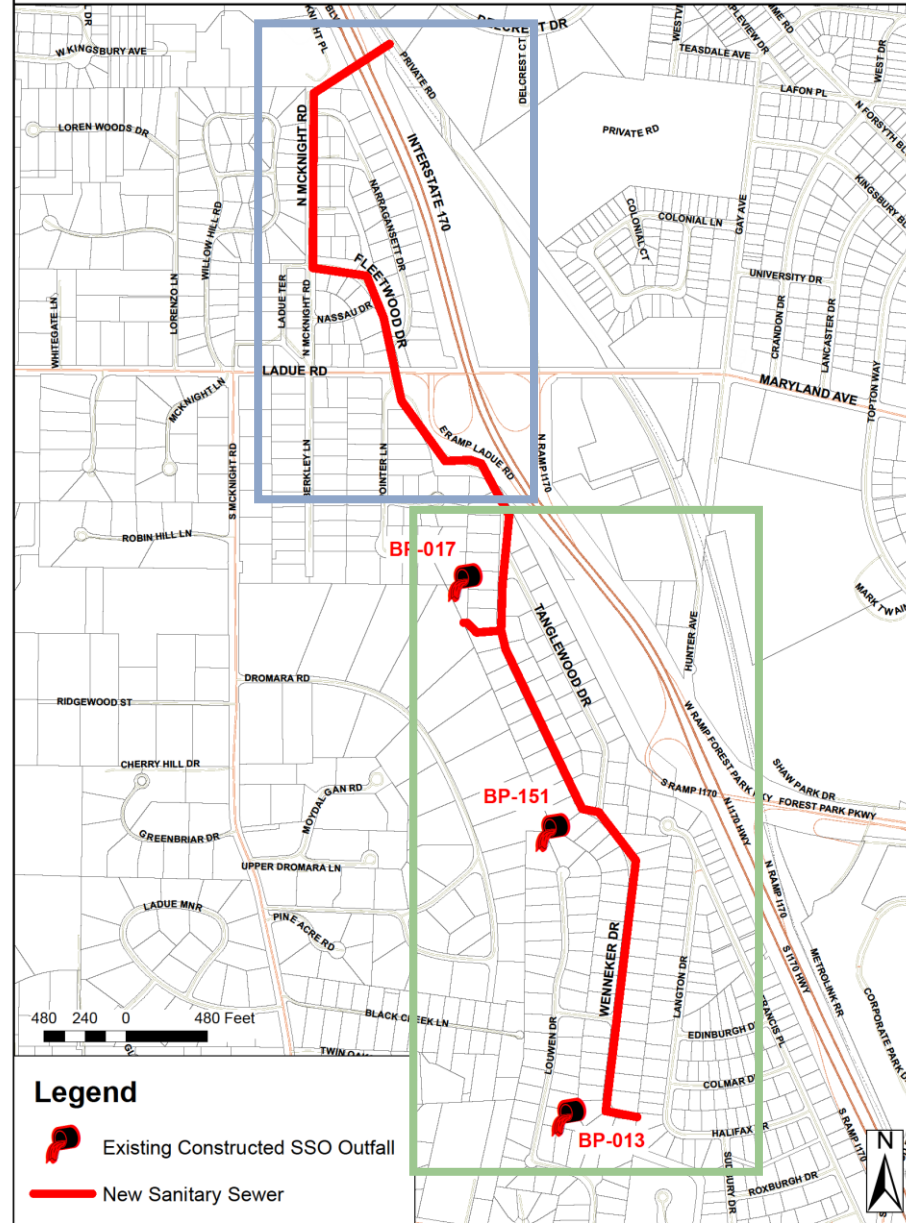
 **636-536-5854**

 **duchenecr@bv.com**

**Derrick Stanton**  
Kwame Building Group, Inspector

# Project Overview

- General Goal
  - Increase the capacity of the wastewater sewer in this area
- Project Scope
  - Replace approximately 7,920 feet of wastewater pipe
  - Increase pipe size to between 8" and 42" in diameter
- Benefits
  - Fewer basement backups
  - Eliminate 3 SSOs



- Sewer work complete
- Sewer work planned



# Tentative Construction Schedule

- **Overall Project Start:** Fall 2023
- **North of Ladue Road Start:** Summer 2025
- **Overall Project End:** Spring 2026

*Construction schedule is subject to change based on weather, utility conflicts, supply chain problems, and other unforeseen issues.*

# Previous Public Engagement

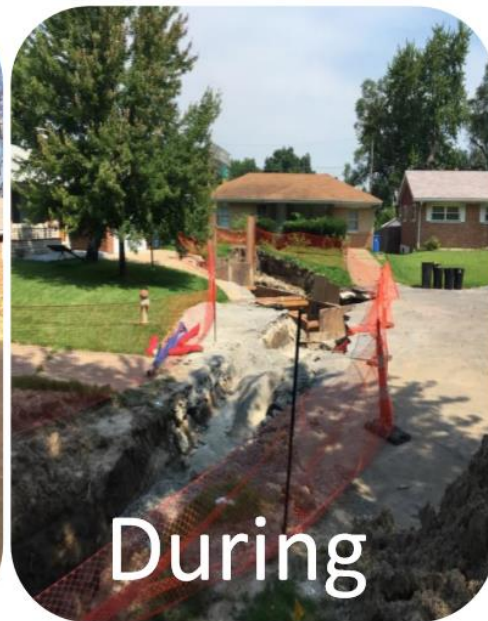
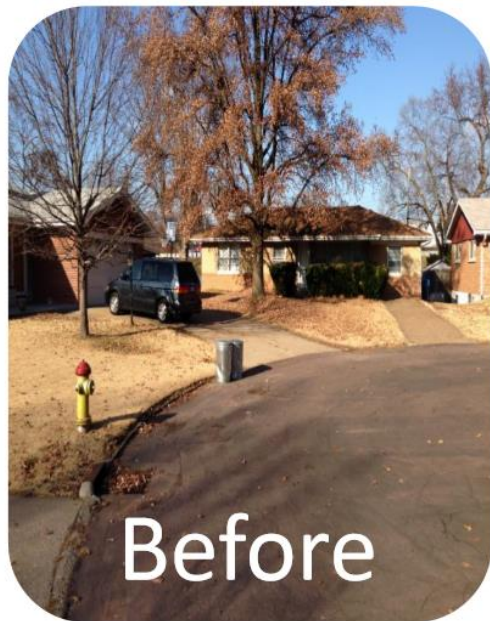
- October 2023 – Neighborhood Public Meeting (Construction)
- December 2020 – Neighborhood Public Meeting (Design)

# What can residents expect?

- Trenches or “open-cut” excavation
- Construction noise during normal business hours
- Traffic control plan and access issues
  - Lane and road closures will temporarily affect traffic
  - Temporary access restrictions to residential properties
  - Contractor will notify property owners before access restrictions
- *Note: Please notify us of any dog fences, sprinkler systems or other underground assets.*

## How will it look when construction is finished?

- Trenches backfilled soon after pipe is installed
  - Roadway and sidewalk restoration
- Private property restoration per easement



# Construction Schedule Breakdown

- 11S – 16S
- Spring 2025 – Fall 2025





-

# Frequently Asked Questions

- Will this work disrupt sewer or other utility services?
- Will trees be removed as part of this project?
- Will construction affect access to my driveway?
- Will emergency vehicles have access to my property during construction?

# Project Contacts

[MSDProjectClear.org/11847](https://MSDProjectClear.org/11847)

**Vali Jo Hansen**  
MSD, Project Manager

 **314-335-2160**

 **[vhansen@stlmsd.com](mailto:vhansen@stlmsd.com)**

**Dennis Perry**  
Bates Utility, Project Manager

 **636-939-5628**

 **[dperry@batesutility.com](mailto:dperry@batesutility.com)**

**Cary Duchene**  
Black & Veatch, Construction Manager

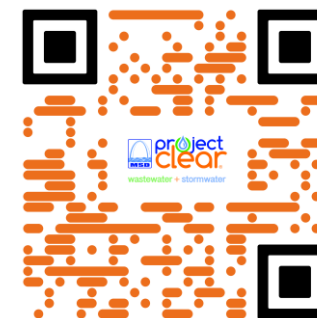
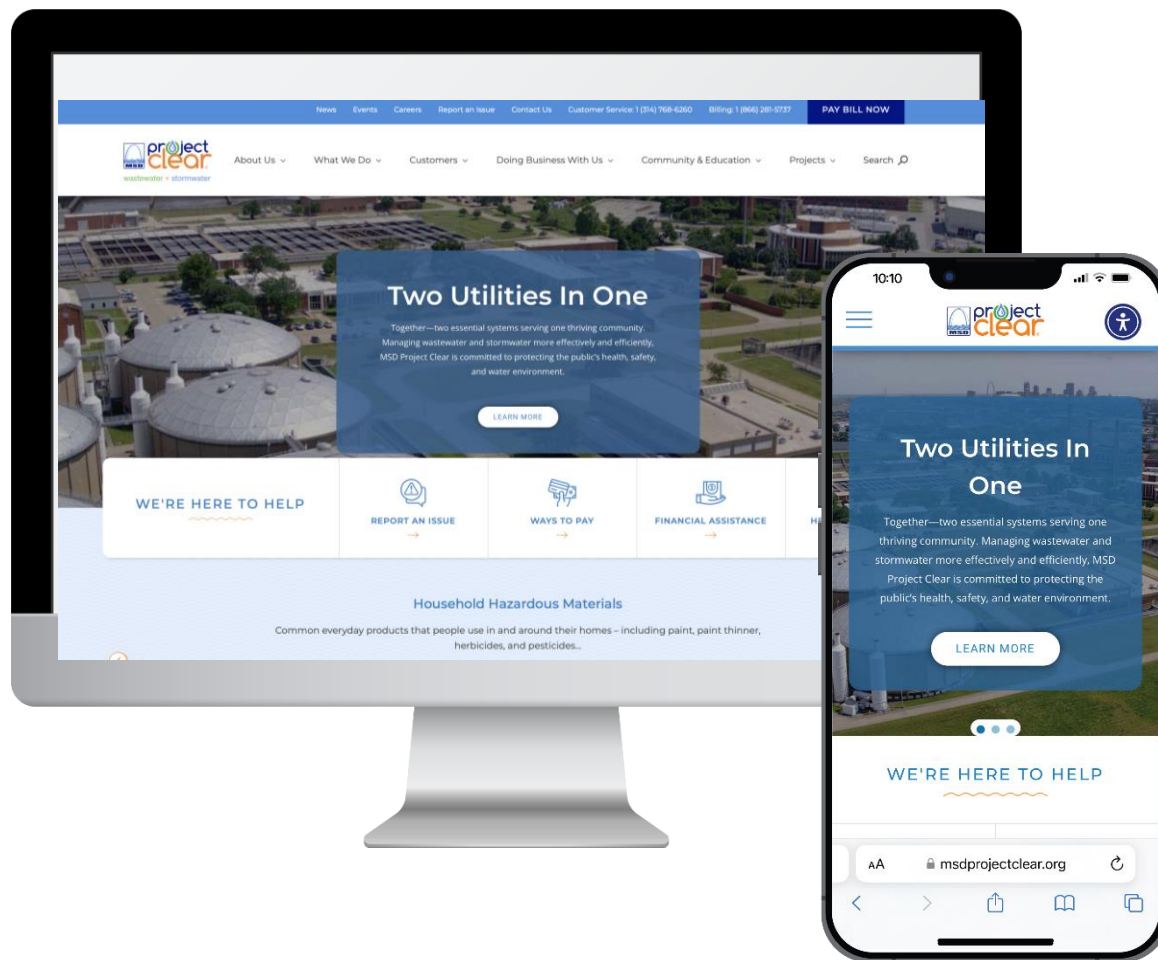
 **636-536-5854**

 **[duchenecr@bv.com](mailto:duchenecr@bv.com)**

**Derrick Stanton**  
Kwame Building Group, Inspector



# Thank You!



**MSDProjectClear.org**  
**(314) 768-6260**



**@MSDProjectClear**



**Metropolitan St. Louis Sewer District**