

# McCutcheon and Thorndell Sanitary Relief (12346) Virtual Town Hall



May 28, 2025

# Agenda



**Technology Overview & Ground Rules**



**Overview of MSD Project Clear**



**Project Overview**



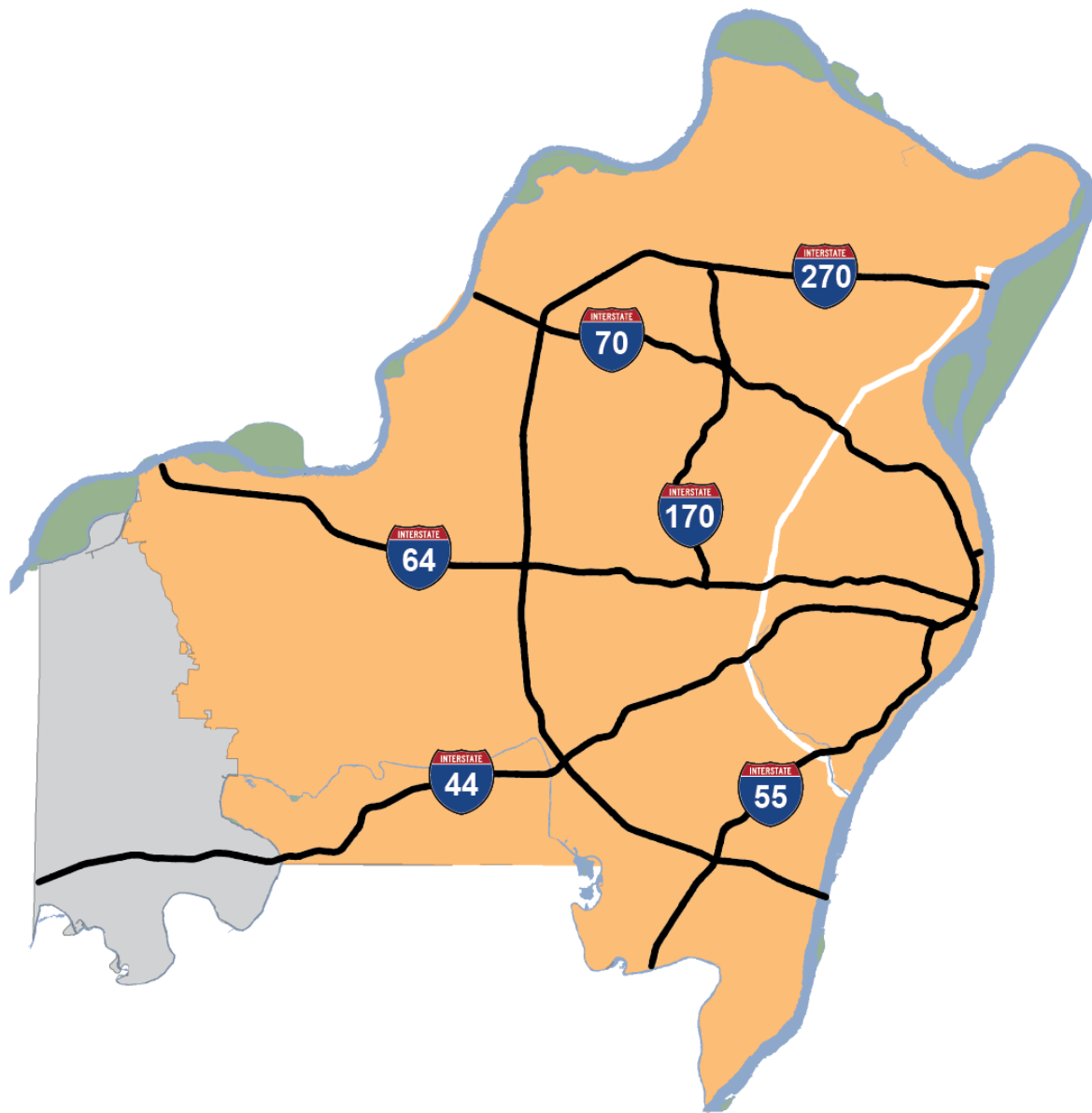
**FAQs**



**Q&A**

# Virtual Town Hall Platform

- Participants are in listen-and-view mode.
- There are several ways to engage:
  - Type your question using the Q/A icon on your menu bar at any time (even more the Q&A portion has begun)
  - Everyone can read all questions posed and you can “upvote” questions you want answered



**520**

**SQUARE MILE SERVICE AREA**



**4<sup>TH</sup>**

**LARGEST SYSTEM IN THE U.S.**



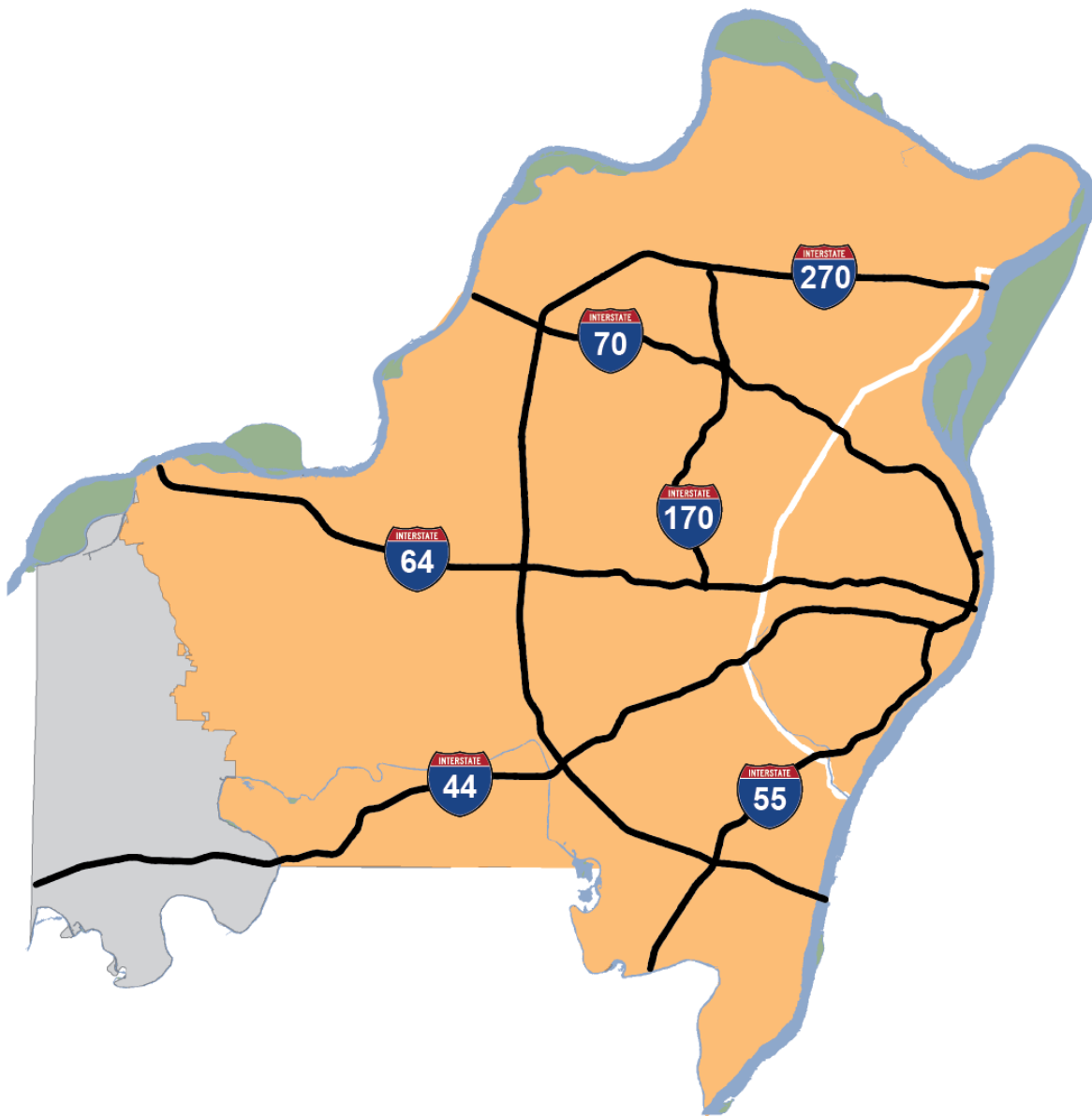
**1.3 MILLION**

**CUSTOMERS**



**87**

**MUNICIPALITIES**



**>350M**  
**GALLONS TREATED/DAY**



**10,000**  
**MILES OF SEWERS**



**345,000**  
**MANHOLES AND INLETS**



**7**  
**TREATMENT FACILITIES**

# McCutcheon and Thorndell Sanitary Relief (12346)

**Sam Bush**  
**MSD, Project Manager**



**314-768-2778**



**sbush1@stlmsd.com**

**Allison Mannion**  
**Lochmueller Group, Project Engineer**



**314-446-3794**



**amannion@lochgroup.com**

# Project Overview

- General Goal

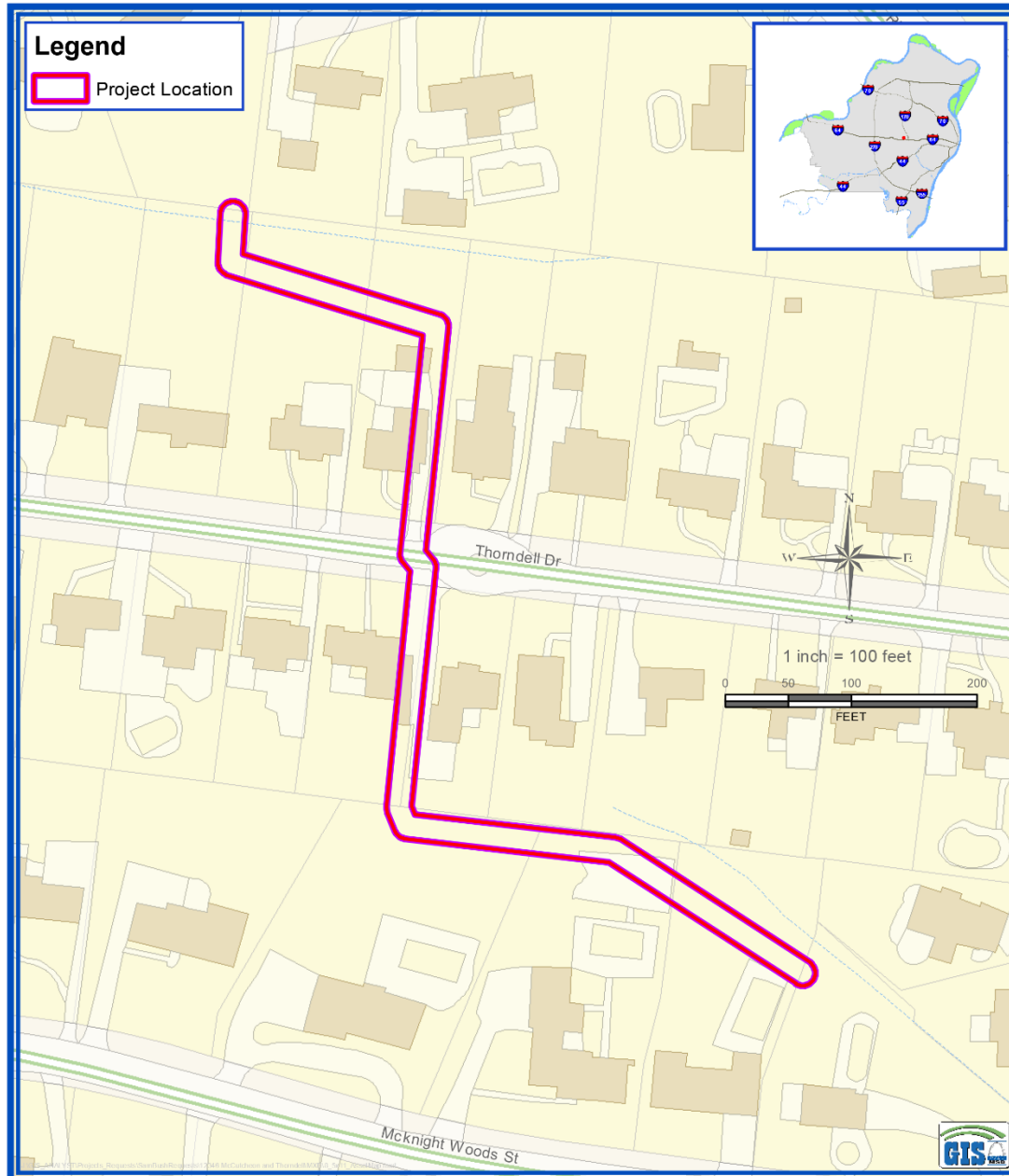
- Increase the capacity of the wastewater sewer in this area
- Reduce basement backups

- Project Scope

- Replace approximately 1,275 feet of wastewater pipe
- Increase pipe size to 18"

- Benefits

- Fewer basement backups



## Project Map

- Design completion: Spring 2025
- Easement acquisition completion: Spring 2026
- Estimated construction start: Winter 2026
- Estimated duration: 12 months

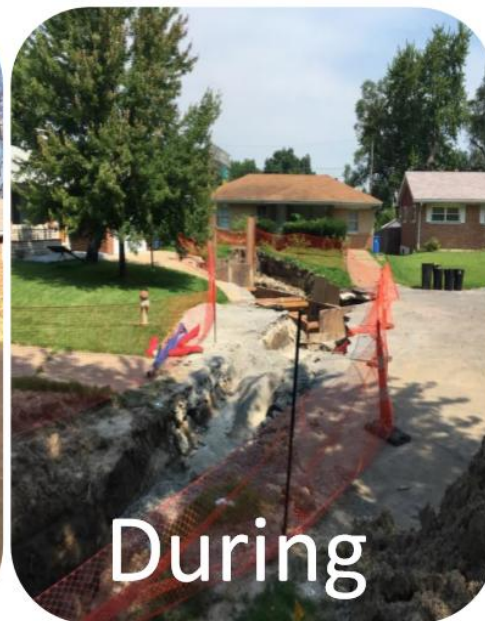
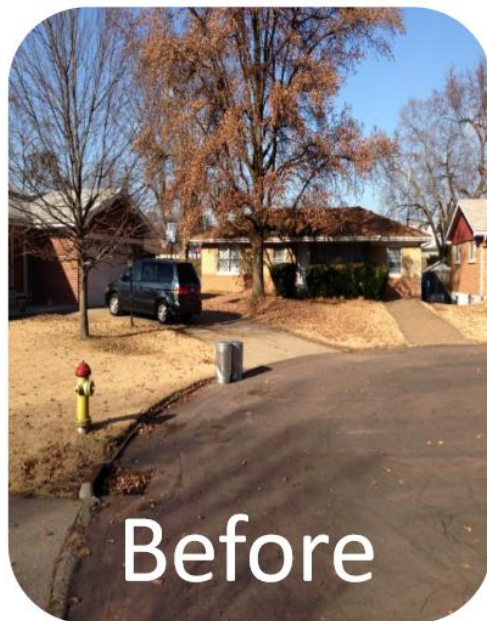


# What can residents expect?

- Trenches or “open-cut” excavation
- Tunneling
- Construction noise during normal business hours
- Traffic control plan and access issues
  - Lane and road closures will temporarily affect traffic
  - Temporary access restrictions to residential properties
  - Contractor will notify property owners before access restrictions

# How will it look when construction is finished?

- Trenches backfilled soon after pipe is installed
  - Roadway and sidewalk restoration
- Private property restoration per easement



# Frequently Asked Questions

- Will this work disrupt sewer or other utility services?
- Will trees be removed as part of this project?
- Will construction affect access to my driveway?
- Will emergency vehicles have access to my property during construction?

# Questions?

**Sam Bush**  
**MSD, Project Manager**



**314-768-2778**



**[sbush1@stlmsd.com](mailto:sbush1@stlmsd.com)**

**Allison Mannion**  
**Lochmueller Group, Project Engineer**



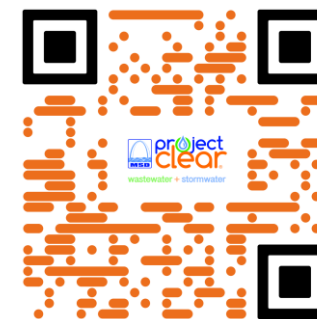
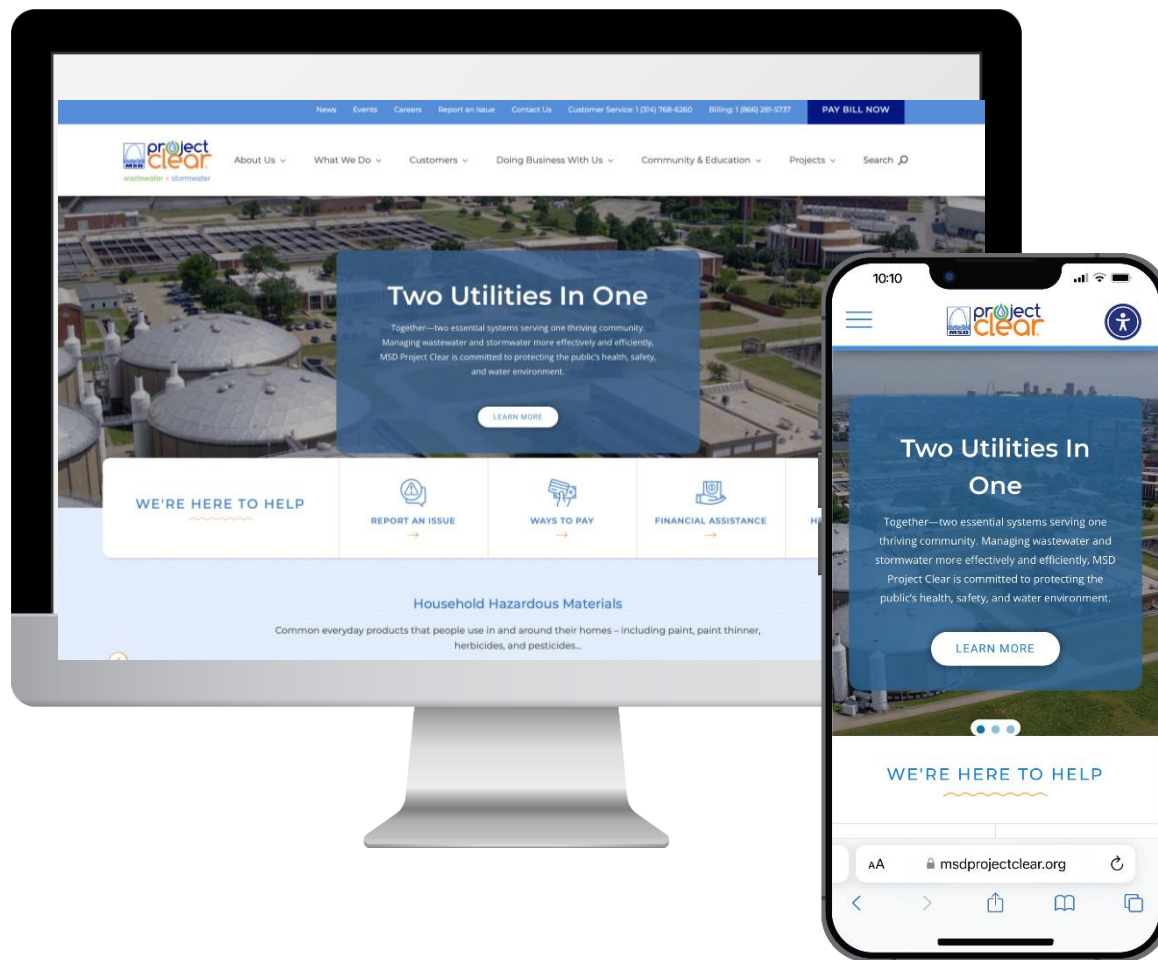
**314-446-3794**



**[amannion@lochgroup.com](mailto:amannion@lochgroup.com)**

**[MSDProjectClear.org/12346](https://MSDProjectClear.org/12346)**

# Thank You!



**MSDProjectClear.org**  
**(314) 768-6260**



**@MSDProjectClear**



**Metropolitan St. Louis Sewer District**