

Brentwood and Red Bud CSO Elimination (12139) Virtual Town Hall



September 4, 2025

Agenda



Technology Overview & Ground Rules



Overview of MSD Project Clear



Project Overview



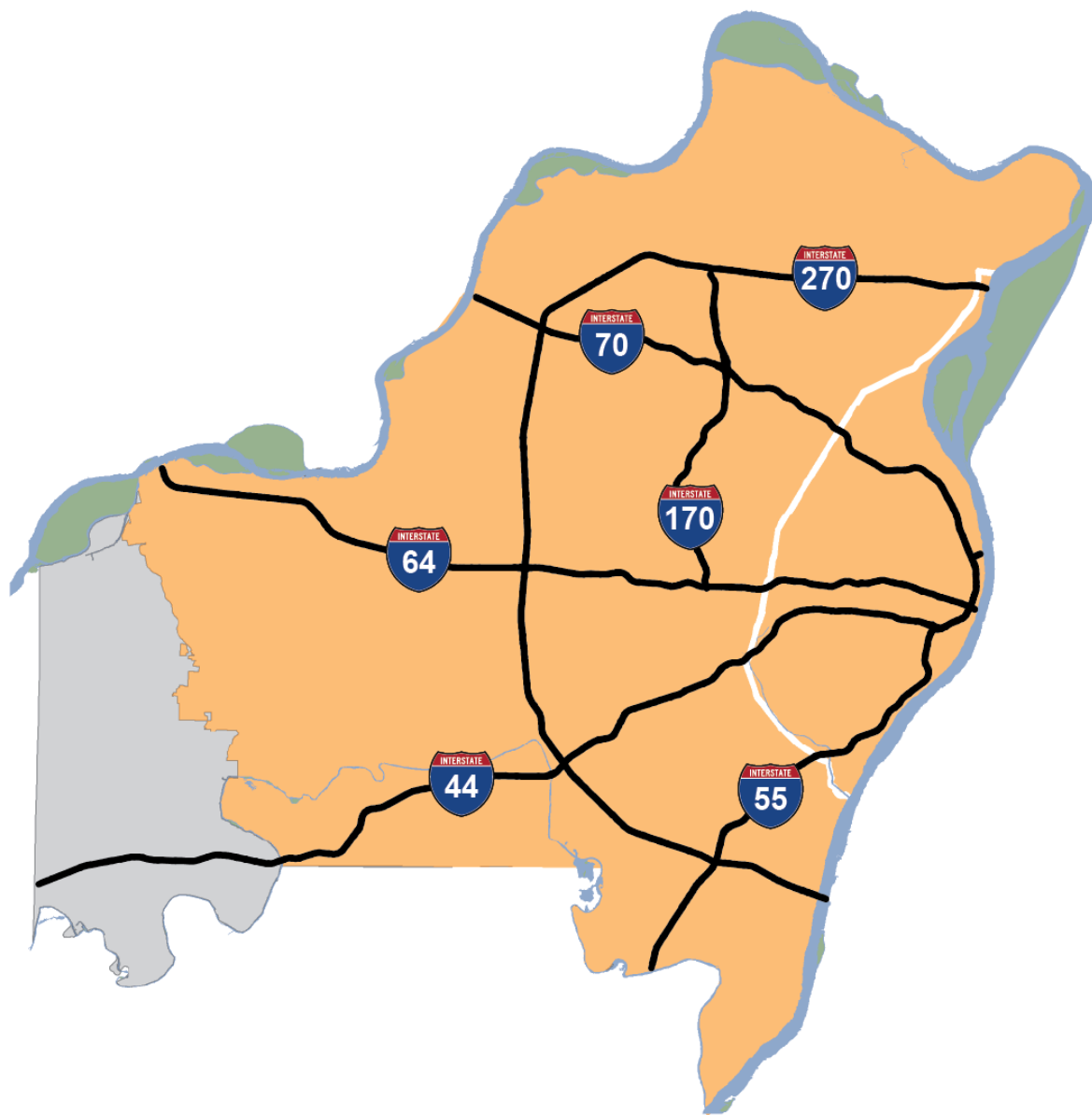
FAQs



Q&A

Virtual Town Hall Platform

- Participants are in listen-and-view mode.
- There are several ways to engage:
 - Type your question using the Q/A icon on your menu bar at any time (even after the Q&A portion has begun)
 - Everyone can read all questions posed and you can “upvote” questions you want answered



520
SQUARE MILE SERVICE AREA



4TH
LARGEST SYSTEM IN THE U.S.



1.3 MILLION
CUSTOMERS



87
MUNICIPALITIES



Brentwood and Red Bud CSO Elimination (12139)

Jeff Brigman
MSD, Project Manager

 **314-768-6385**

 **jbrigman@stlmsd.com**

Cary Duchene
Black & Veatch

 **314-541-8091**

 **duchenecr@bv.com**

Austin Markey
Fred M. Luth

 **314-502-0029**

 **amarkey@fredmluth.com**

Project Overview

- General Goal

- Increase the capacity of the wastewater and stormwater sewers in this area

- Project Scope

- Construct approximately 16,600 feet of wastewater and stormwater pipes
 - Increase pipe size to between 6-36"

- Benefits

- Fewer basement backups
 - Eliminate 1 combined sewer overflow (CSO)

Winter/Spring 2028

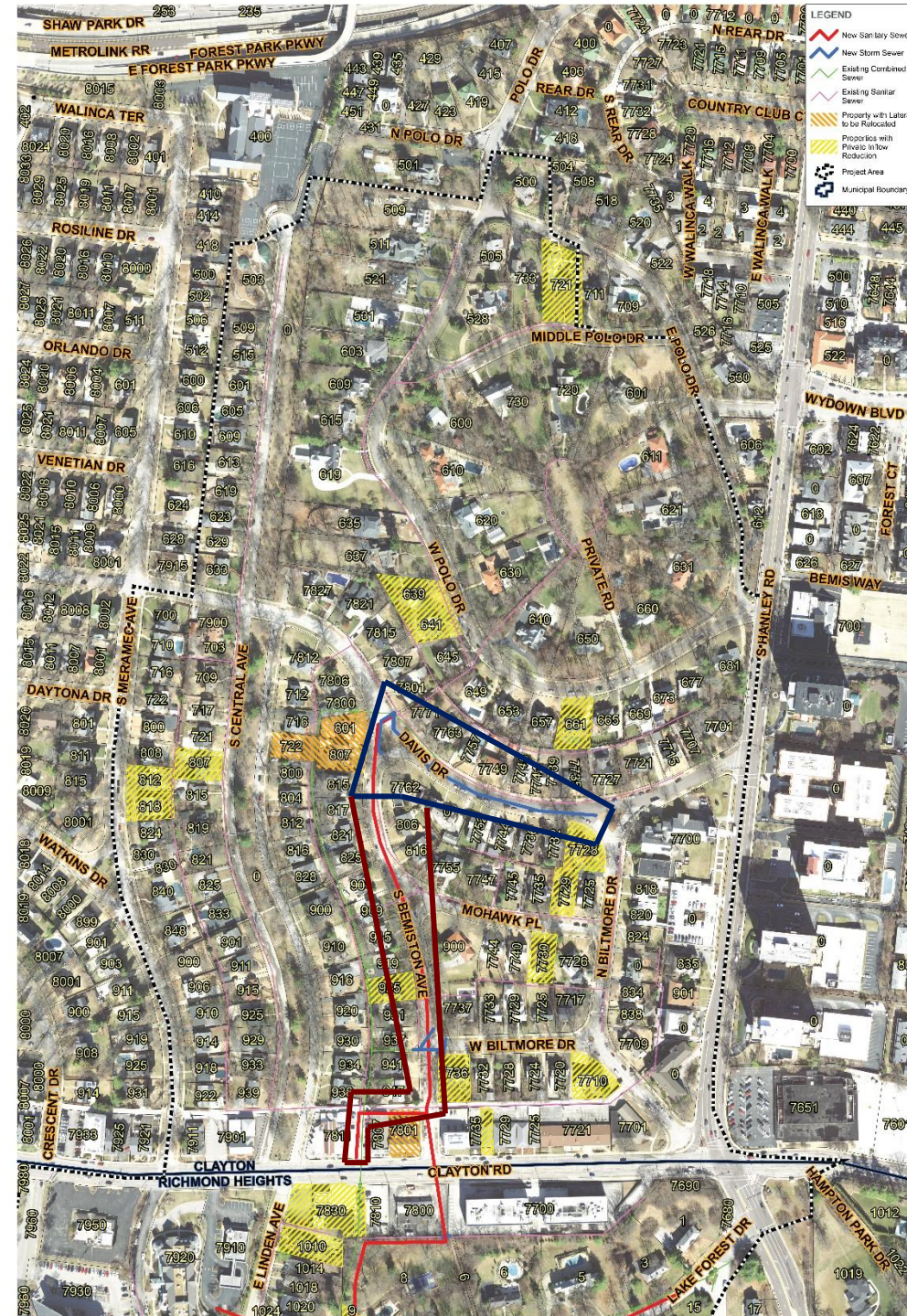
Fall 2025

Winter/Spring 2026

Summer/Fall 2026

Winter/Spring 2027

Winter/Spring 2028



Northern part

Summer/Fall 2027

Winter/Spring 2027

Tentative Construction Schedule

- **Start:** Fall 2025
- **End:** Spring 2029

Construction schedule is subject to change based on weather, utility conflicts, supply chain problems, and other unforeseen issues.

Previous Public Engagement

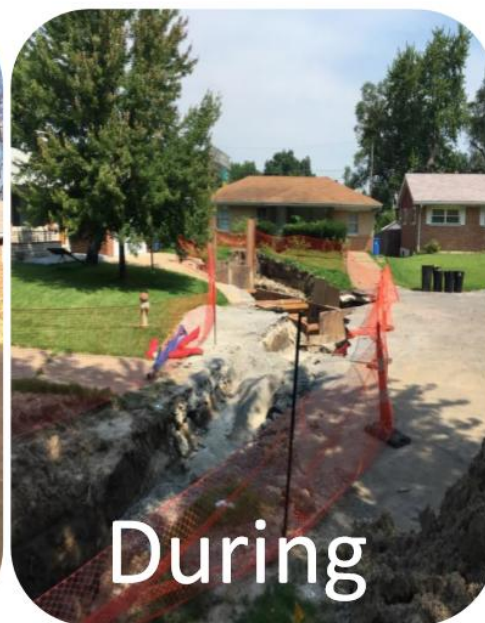
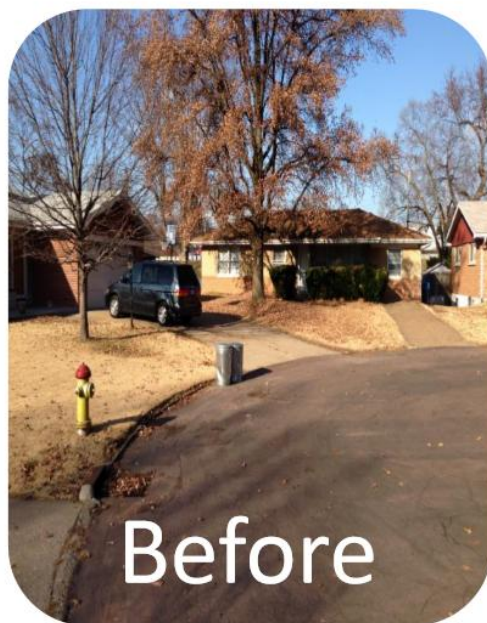
- Neighborhood Public Meetings
 - August 2020
 - January 2024

What can residents expect?

- Trenches or “open-cut” excavation
- Tunneling
- Construction noise during normal business hours
- Traffic control plan and access issues
 - Lane and road closures will temporarily affect traffic
 - Temporary access restrictions to residential properties
 - Contractor will notify property owners before access restrictions

How will it look when construction is finished?

- Trenches backfilled soon after pipe is installed
 - Roadway and sidewalk restoration
- Private property restoration per easement



Frequently Asked Questions

- Will this work disrupt sewer or other utility services?
- Will trees be removed as part of this project?
- Will construction affect access to my driveway?
- Will emergency vehicles have access to my property during construction?

Brentwood and Red Bud CSO Elimination (12139)

Jeff Brigman
MSD, Project Manager

 **314-768-6385**

 **jbrigman@stlmsd.com**

Austin Markey
Fred M. Luth

 **314-502-0029**

 **amarkey@fredmluth.com**

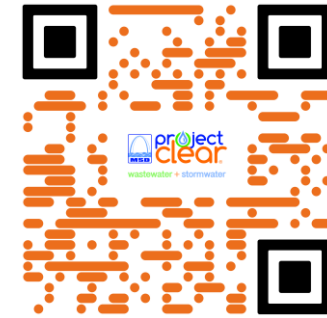
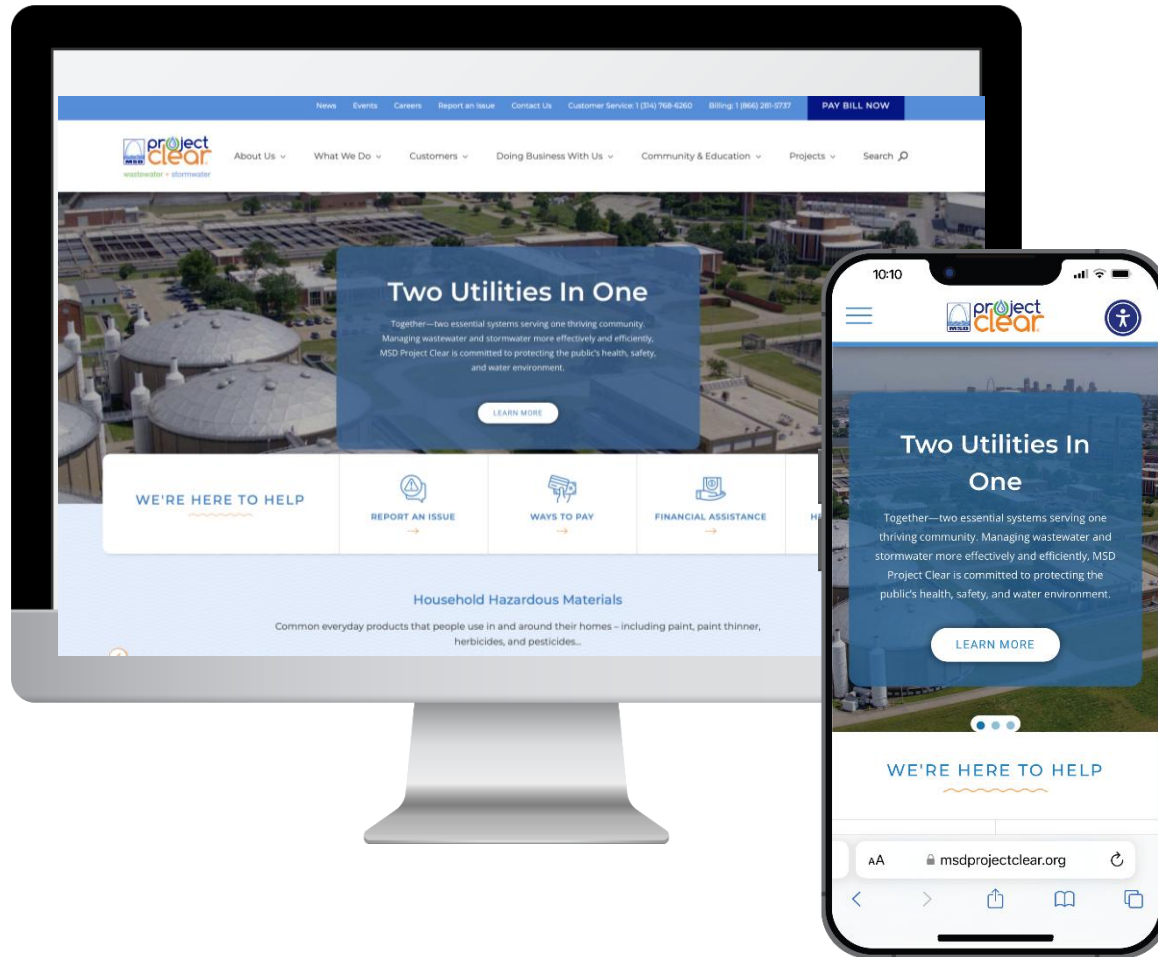
Cary Duchene
Black & Veatch

 **314-541-8091**

 **duchenecr@bv.com**

msdprojectclear.org/brentwoodredbud

Thank You!



MSDProjectClear.org
(314) 768-6260



@MSDProjectClear



Metropolitan St. Louis Sewer District