

Rollingsford Storm Improvements (11256) Virtual Town Hall



December 9, 2025

Agenda



Technology Overview & Ground Rules



Overview of MSD Project Clear



Project Overview



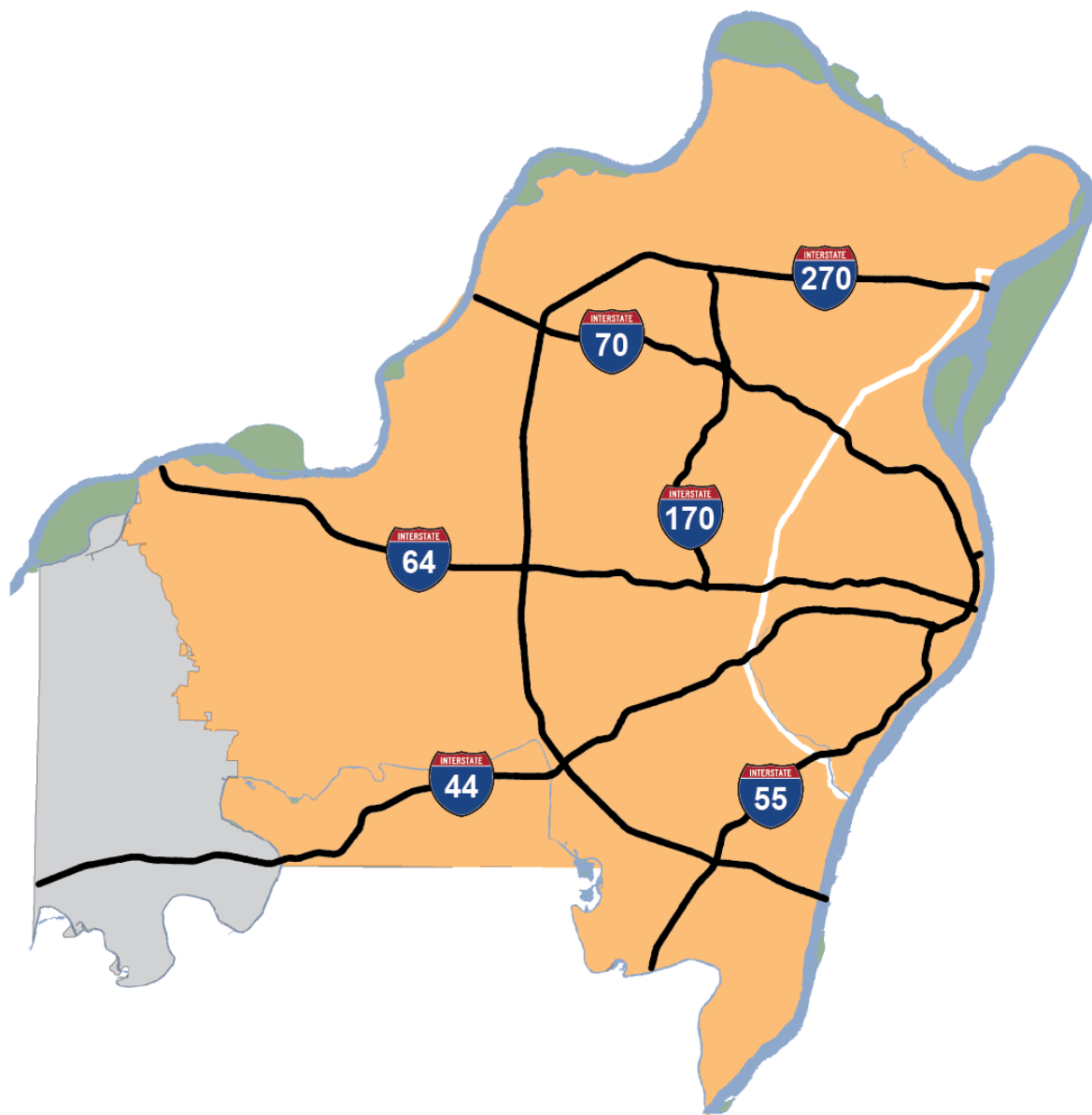
FAQs



Q&A

Virtual Town Hall Platform

- Participants are in listen-and-view mode.
- There are several ways to engage:
 - Type your question using the Q/A icon on your menu bar at any time (even more the Q&A portion has begun)
 - Everyone can read all questions posed and you can “upvote” questions you want answered



520

SQUARE MILE SERVICE AREA



4TH

LARGEST SYSTEM IN THE U.S.



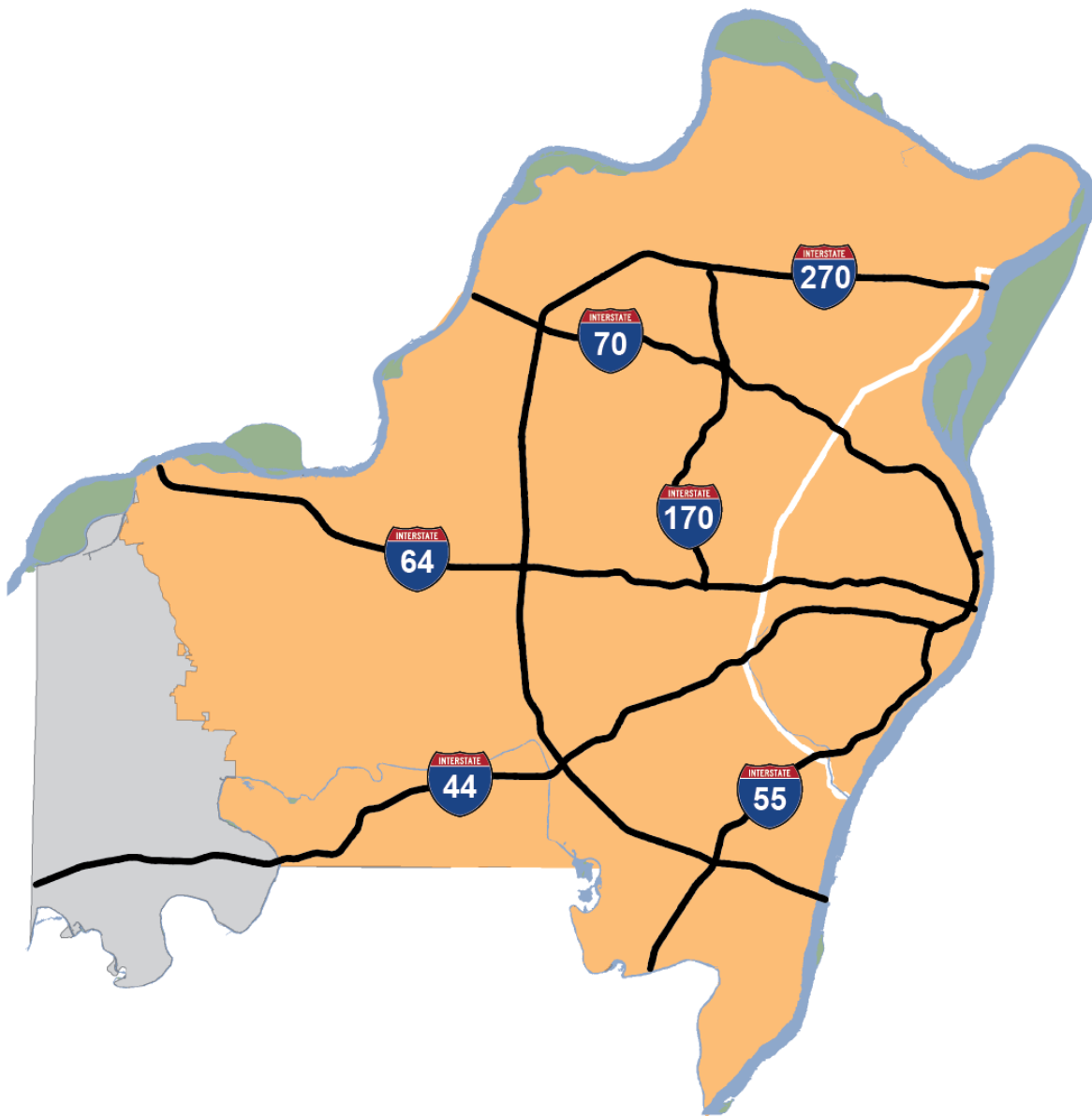
1.3 MILLION

CUSTOMERS



87

MUNICIPALITIES



>350M
GALLONS TREATED/DAY



10,000
MILES OF SEWERS



345,000
MANHOLES AND INLETS



7
TREATMENT FACILITIES

Rollingsford Storm Improvements (11256)

Jennifer Gerwitz
MSD, Project Manager



314-335-2036



jgerwitz@stlmsd.com

Tim Dean
Intuition & Logic, Project Manager



636-777-3000



tim@ilincworld.com

Project Overview

- General Goal

- Reduce erosion and protect nearby properties and infrastructure along the creek/stream

- Project Scope

- Stabilize approximately 700 feet of streambank
 - Install approximately 100 feet of new storm sewer pipe
 - Install approximately 1,400 square feet of retaining wall

- Benefits

- Protect nearby buildings and public infrastructure from erosion
 - Improve stream health and water quality by reducing sediment

The Metropolitan St. Louis Sewer District
Rollingsford to Bristol Rock Creek Bank Stabilization (11256)



Project Map

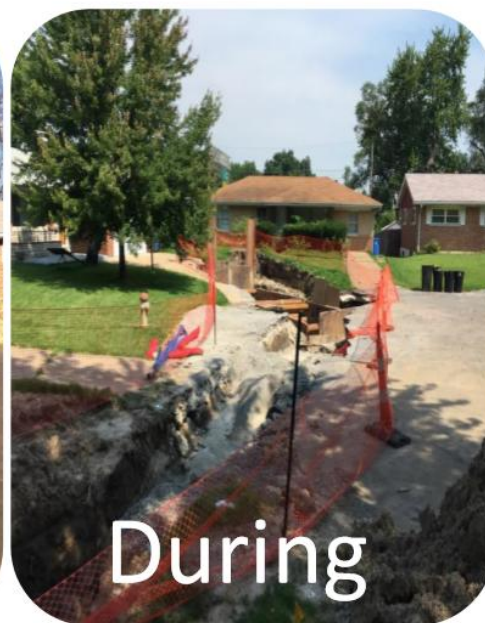
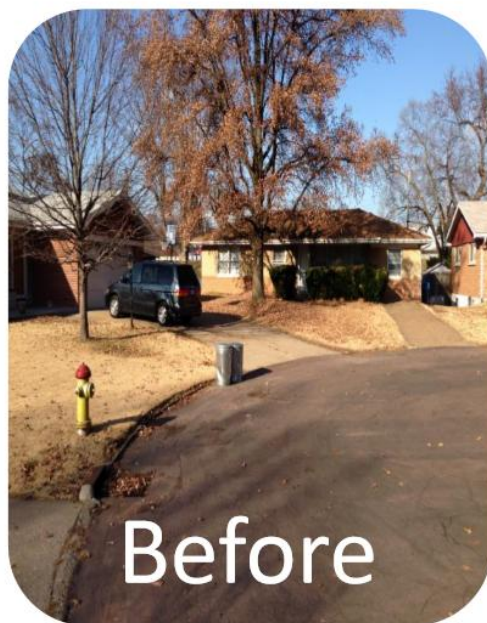
- Design completion: Winter 2025
- Easement acquisition completion: Winter 2026
- Estimated construction start: Summer 2027
- Estimated duration: 9-12 months

What can residents expect?

- Trenches or “open-cut” excavation
- Construction noise during normal business hours
- Traffic control plan and access issues
 - Lane and road closures will temporarily affect traffic
 - Temporary access restrictions to residential properties
 - Contractor will notify property owners before access restrictions

How will it look when construction is finished?

- Trenches backfilled soon after pipe is installed
 - Roadway and sidewalk restoration
- Private property restoration per easement



Frequently Asked Questions

- Will this work disrupt sewer or other utility services?
- Will trees be removed as part of this project?
- Will construction affect access to my driveway?
- Will emergency vehicles have access to my property during construction?

Questions?

Jennifer Gerwitz
MSD, Project Manager



314-335-2036



jgerwitz@stlmsd.com

Tim Dean
Intuition & Logic, Project Manager



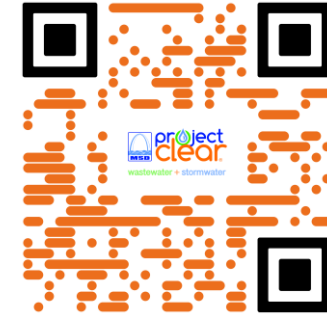
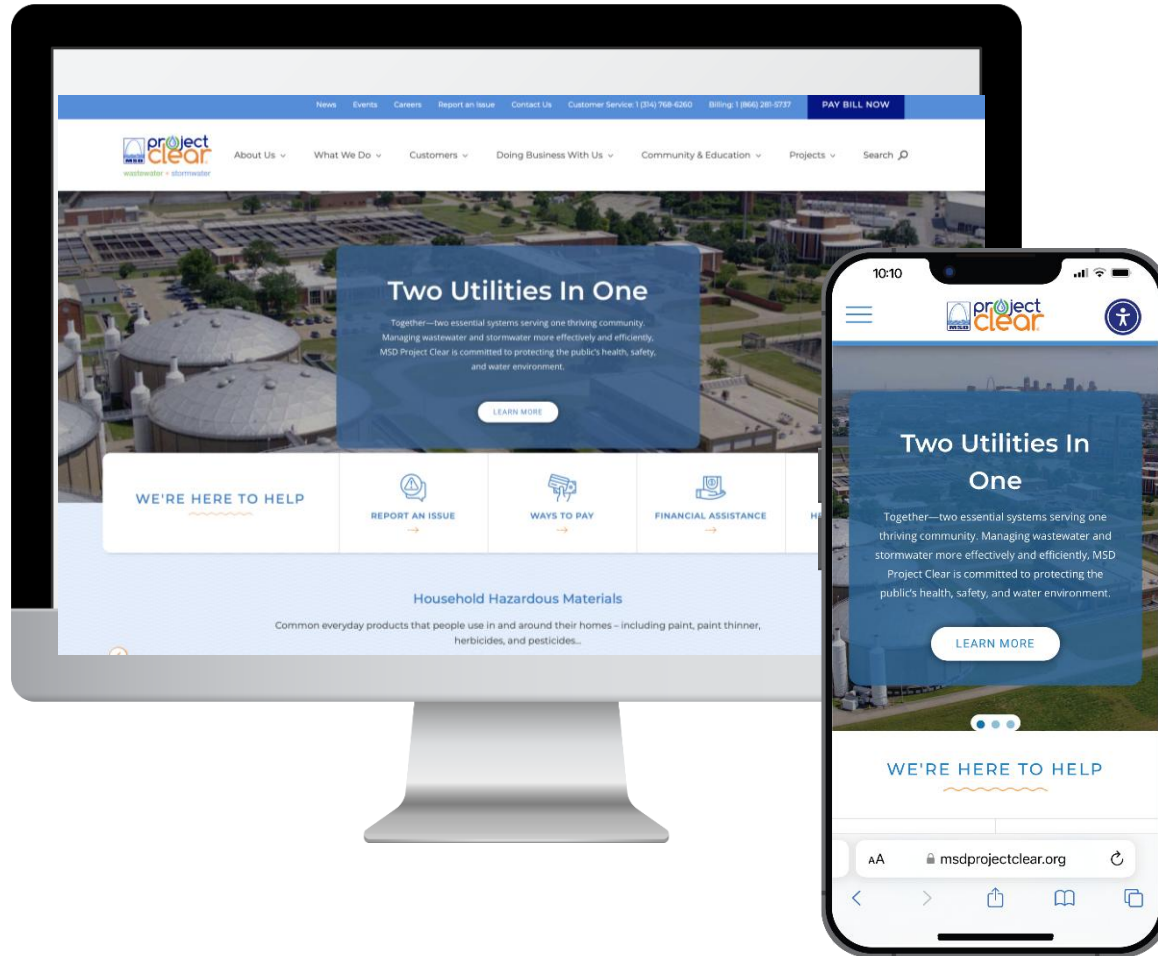
636-777-3000



tim@ilincworld.com

MSDProjectClear.org/11256

Thank You!



MSDProjectClear.org
(314) 768-6260



@MSDProjectClear



Metropolitan St. Louis Sewer District