

2026 is shaping up to be a very busy year, with targeted project milestones focused on enclosing the solids processing buildings at both sites and completing the installation of all process equipment. With these goals in mind, Kokosing/Plocher is ensuring that all necessary resources are in place to successfully execute the work.

Equipment and materials are being delivered ahead of installation, and the staging and warehousing of these early deliveries is creating some logistical challenges. Storage facilities are quickly filling up, and warehouse staff are working diligently to organize and manage the growing inventory. Despite these added efforts, the Kokosing/Plocher team prefers this approach over the alternative of waiting on materials when it's time for installation.

BISELL CONSTRUCTION UPDATE

RECENT PROGRESS

- Began structural steel installation on the incineration side of the **Solid Processing Building (SPB)**
- Completed elevated deck slabs and precast wall panels on the dewatering side
- Started installation of dewatering tanks and vessels
- Installed electrical raceways and process piping in the SPB basement
- Continued receiving process equipment at storage warehouses

NEXT STEPS

- Complete structural steel installation at the SPB
- Install process equipment in the SPB basement
- Install roofing on the dewatering side
- Continue electrical raceway and process piping installation
- Install process gas ductwork at the incinerator
- Install process drain from the SPB to the plant drain system



Structural steel erection and exterior wall panel installation progress on the Bissell SPB.

LEMAY CONSTRUCTION UPDATE

RECENT PROGRESS

- Continued structural steel erection, including topping off on the dewatering side and starting the incineration side
- Continued underground utility installation
- Completed SPB foundations and third-floor utility rough-ins
- Began masonry block construction at lower SPB levels
- Completed erection of incinerator reactors and began installing ancillary vessels
- Received process equipment at storage warehouses
- Continued Building 7 finish-out (proposed warehouse building)
- Began electrical work for service water pumps at the blower building

NEXT STEPS

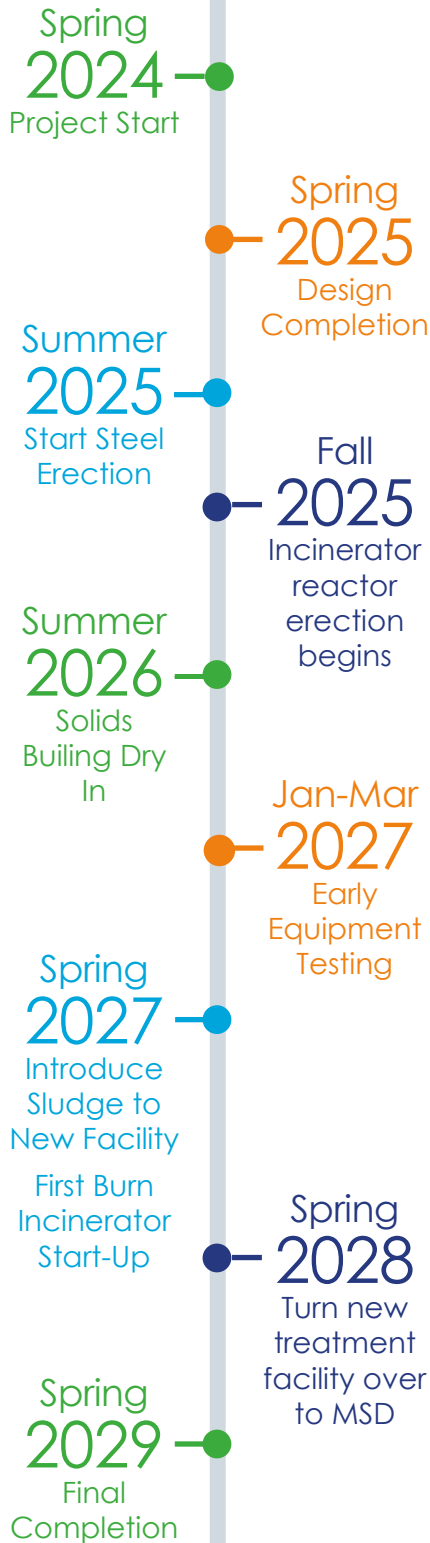
- Install precast wall panels on the dewatering side of the SPB
- Continue structural steel erection on the incineration side
- Complete elevated concrete deck slabs
- Begin installing process equipment at the SPB
- Begin primary sludge pump replacement in the primary clarifier tunnels
- Replace service water pumps at the blower building
- Continue electrical raceway and process piping installation at the SPB



Structural steel framing advances on the Lemay SPB, with ongoing concrete work and equipment coordination below.



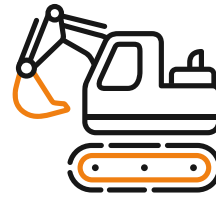
PROJECT TIMELINE



FAST FACTS

INSTALLED TO DATE

122,000 LINEAL FEET
BURIED ELECTRICAL CONDUIT



2,900 TONS
OF STRUCTURAL
STEEL INSTALLED

780 TONS
OF REBAR

35,180 LINEAL FEET
OF STEEL H-PILE USED
IN FOUNDATION



275 DRILLED
PIERS
INSTALLED



25,000
CUBIC YARDS
OF CONCRETE POURED

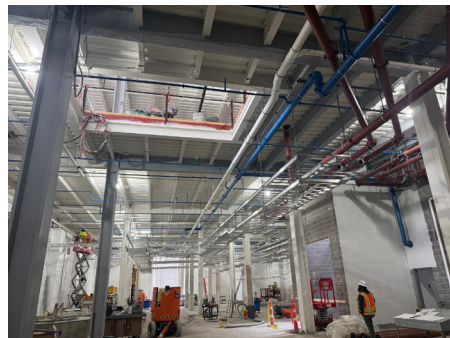
4,600 LINEAL FEET
OF SPRINKLER PIPE

19,000 CMU
BLOCKS

13,500 OF PRECAST
SQ. FEET WALL PANELS

40 VESSELS

2,400 LINEAL
FEET
OF PROCESS PIPING



Installation of process piping, cable trays, and electrical systems continues inside the solids processing building at Bissell.



Process equipment, including pumps and assemblies, is received and staged in storage for future installation.

RECENT INDUSTRY VISIBILITY

- Kokosing/Plocher, CMT, and MSD continued the project presentation series with Year 2 of 5 for the MSD St. Louis Solids Handling Upgrades Project, presenting at the Environmental & Water Resources Institute conference and the 2026 AWWA/MWEA Joint Meeting at the Lake of the Ozarks.
- Upcoming presentations include the 2026 Design-Build Institute of America (DBIA) Water and Wastewater Conference in Dallas, TX, where the team will discuss the use of modeling in the design of the St. Louis FBI project.

CONTACT INFORMATION

Bess McCoy, Manager of Public Affairs
MSD Project Clear
Phone: (314) 768-6243
Email: emccoy@stlmsd.com



wastewater