

Lower Middle River des Peres (LMRDP) CSO Storage Tunnel (11820) Virtual Town Hall



Focus On Alaska Park

June 9, 2026

Agenda



Technology Overview & Ground Rules



Overview of MSD Project Clear



Project Overview



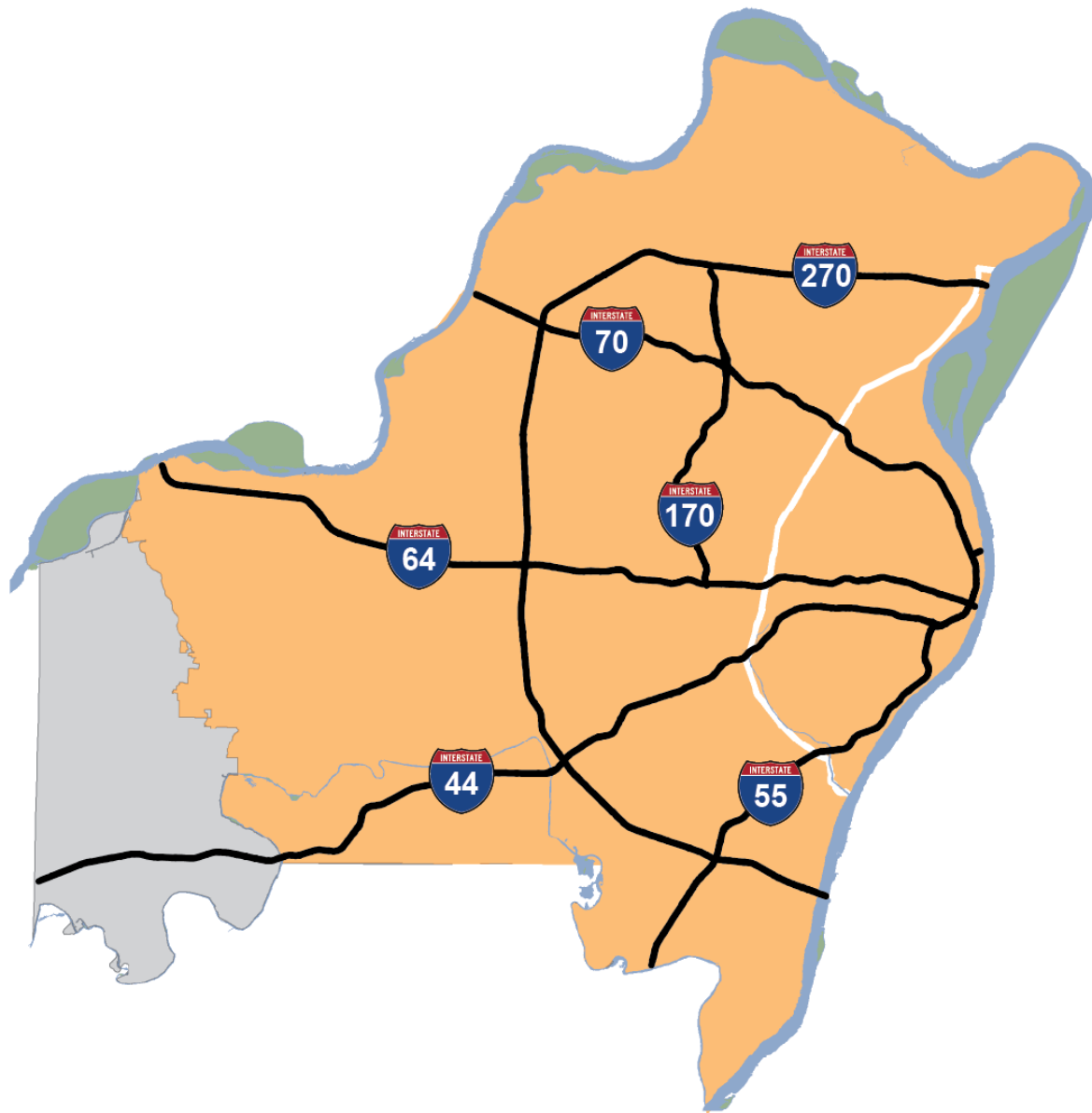
FAQs



Q&A

Virtual Town Hall Platform

- Participants are in listen-and-view mode.
- There are several ways to engage:
 - Type your question using the Q/A icon on your menu bar at any time (even after the Q&A portion has begun)
 - Everyone can read all questions posed and you can “upvote” questions you want answered



520

SQUARE MILE SERVICE AREA



4TH

LARGEST SYSTEM IN THE U.S.



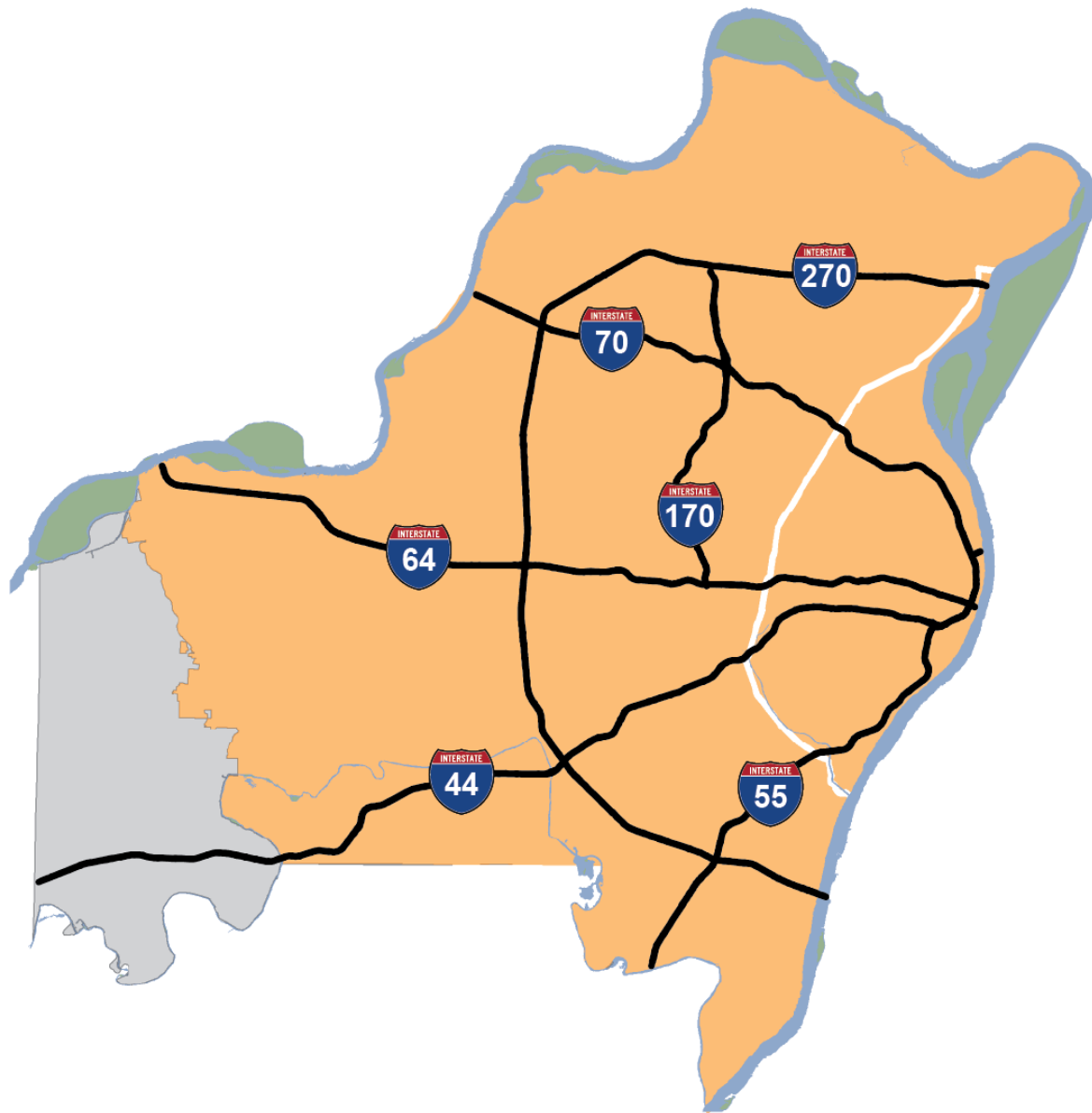
1.3 MILLION

CUSTOMERS



87

MUNICIPALITIES



>350M
GALLONS TREATED/DAY



10,000
MILES OF SEWERS



345,000
MANHOLES AND INLETS



7
TREATMENT FACILITIES

LMRDP CSO Storage Tunnel (11820)

Patricia Pride
MSD, Project Manager



314-768-6275



paprid@stlmsd.com

Bill Haag
Jacobs, Project Manager



618-604-7217



william.haag@jacobs.com

Project Overview

■ General Goal

- Reduce combined sewer overflows (CSOs) to 4 per year during the typical year
- Improve water quality in the River Des Peres during heavy rain events

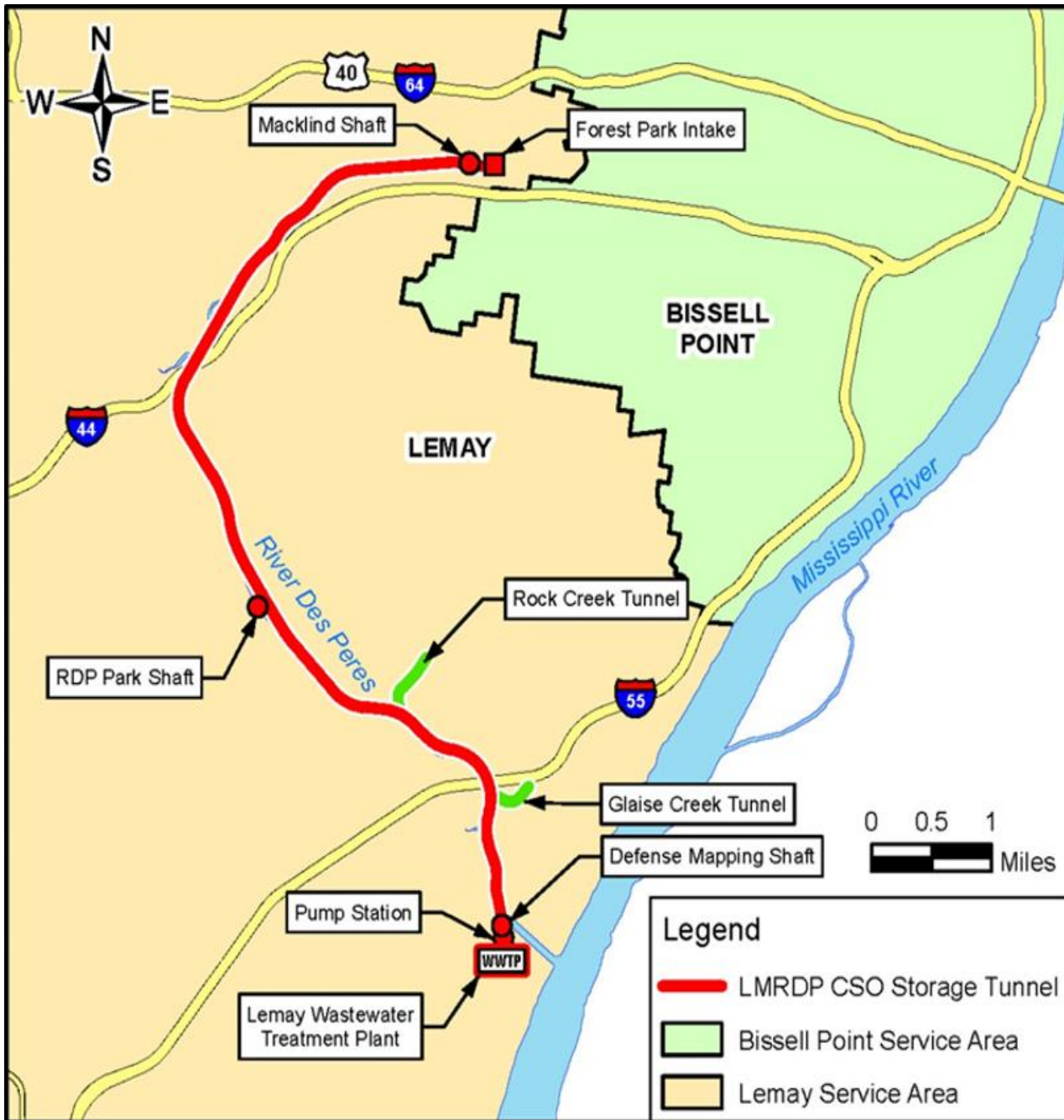
■ Project Scope

- Construct a large underground storage tunnel capable of holding approximately 230 million gallons of wastewater
- Capture and store more wastewater during rain events so it can be treated at the Lemay Wastewater Treatment Plant instead of being released into the River Des Peres
- 9 miles of 30-foot diameter concrete-lined tunnel with three construction shafts and 34 intakes

■ Benefits

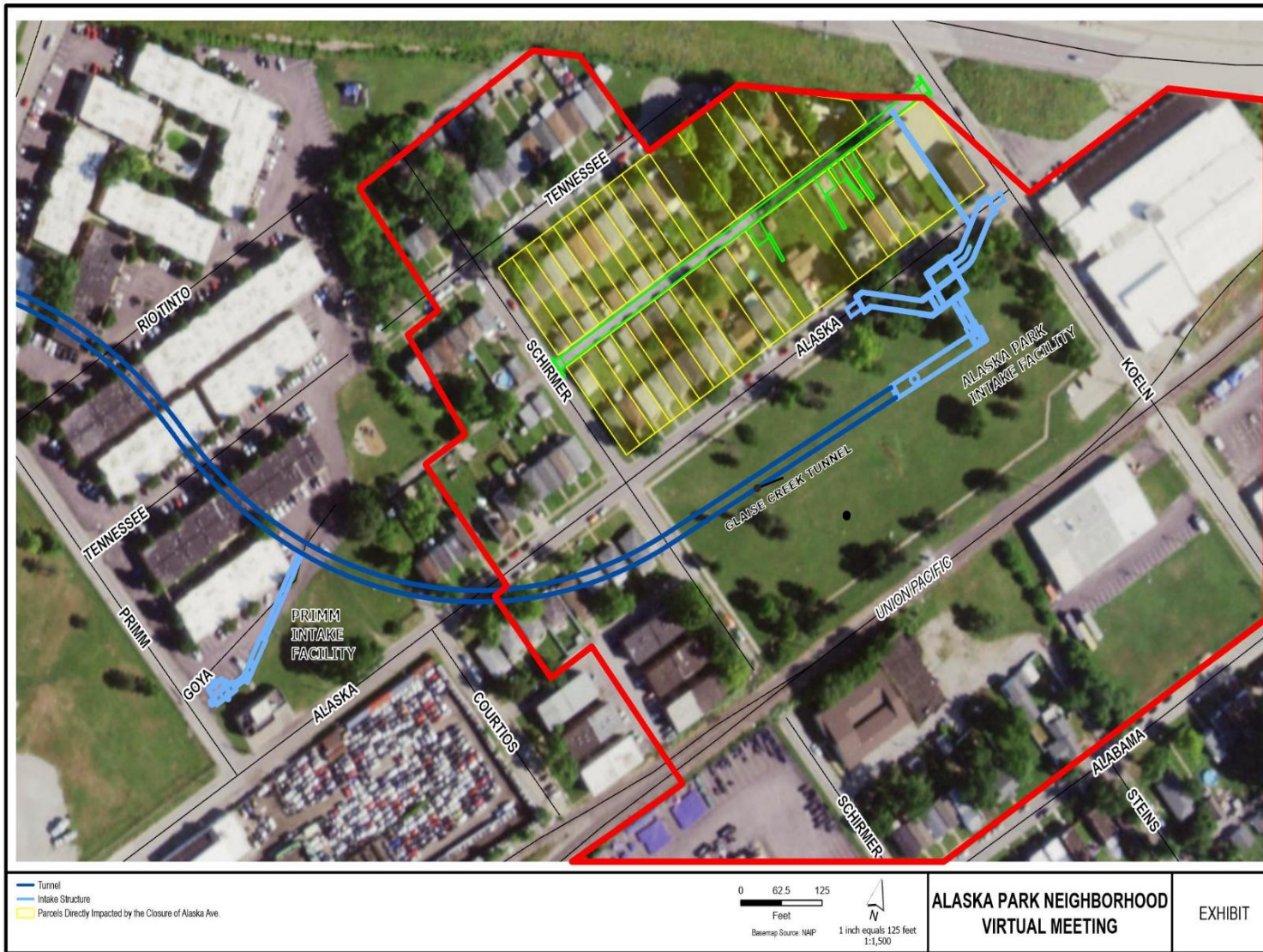
- Improved public health and environmental protection
- Reduced odors associated with sewer overflows
- Long term improvements to the region's wastewater system

Please note that this project will not reduce the frequency or intensity of flooding.



Overall Project Map

- Design completion: April 2027
- Easement acquisition: Ongoing
- Estimated construction start: Late 2028/Early 2029
- Estimated duration: 7.5-8 years for the entire project



Alaska Park Map

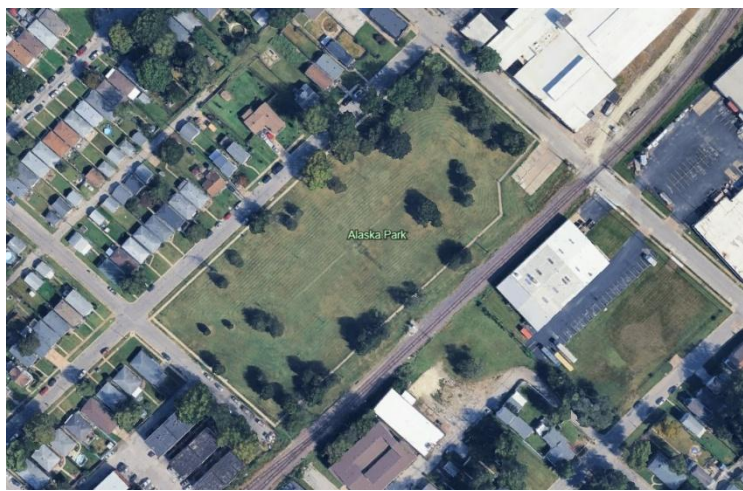
- Estimated duration: 3 years
- The neighborhood will be an active construction site for approximately 3 years.
- The contractor will construct the connecting tunnels, drop shafts, vent shafts and a diversion structure.

What can residents expect?

- The tunnel will be excavated by a Tunnel Boring Machine (TBM) at depths ranging from 150-200’.
- Connecting tunnels and construction shafts will be constructed via drilling and blasting.
- Construction noise during normal business hours.
- Traffic control plan and access issues:
 - Lane and road closures will temporarily affect traffic:
 - 360’ portion of Alaska Avenue will be closed between Koeln Avenue and Schirmer Street.
 - Contractor will notify property owners before access restrictions.

How will it look when construction is finished?

- Excavations will be backfilled
- Roadway and sidewalk restoration
- Private & public property restoration per easement



Before



During



After

Street Level Rendering of the Alaska Park Intake



Frequently Asked Questions

- Will this work disrupt sewer or other utility services?
- Will trees be removed as part of this project?
- Will there be blasting?
- Will construction affect access to my property?
- Will emergency vehicles have access to my property during construction?

LMRDP CSO Storage Tunnel (11820)

Patricia Pride
MSD, Project Manager



314-768-6275



paprid@stlmsd.com

Bill Haag
Jacobs, Project Manager

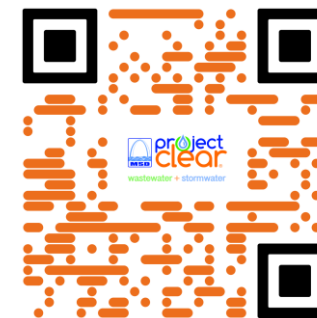
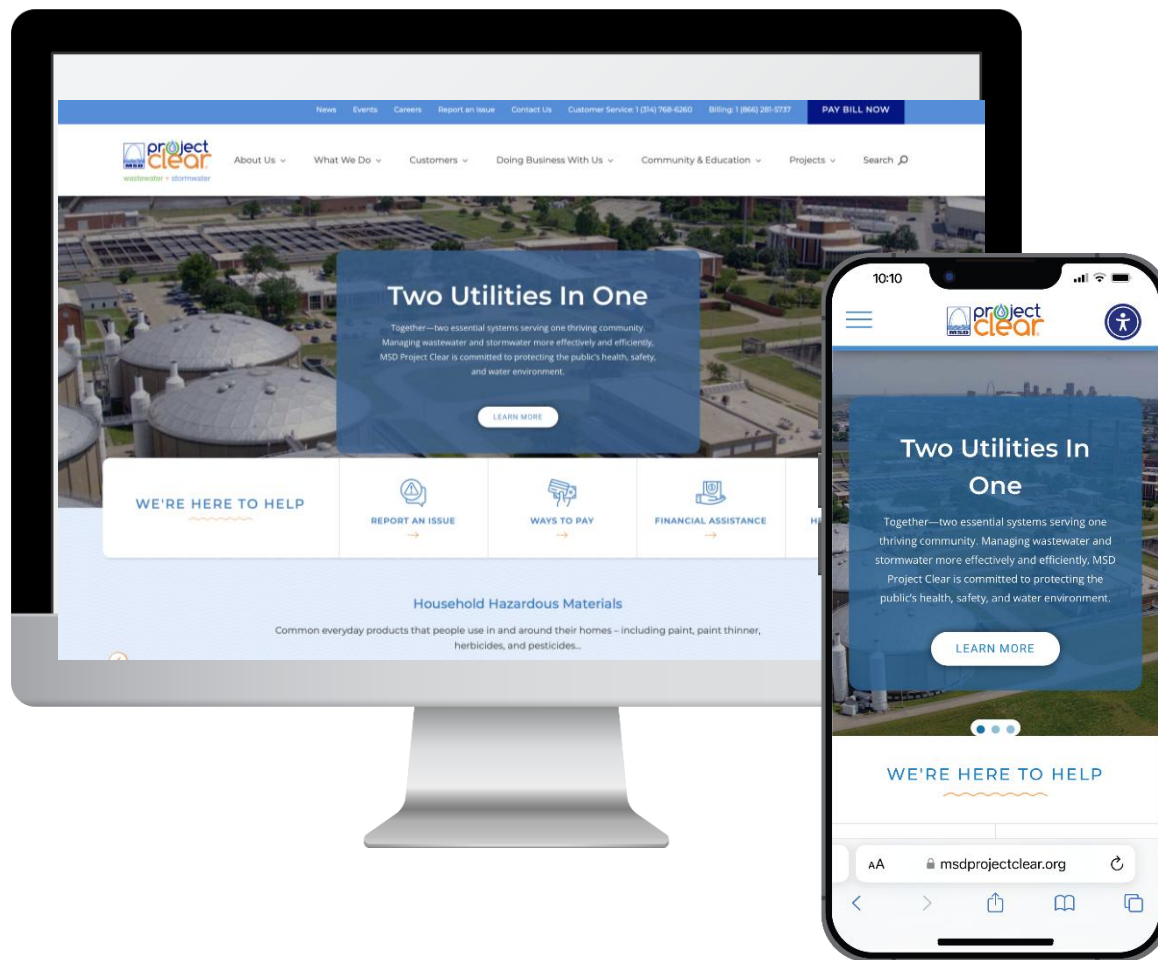


618-604-7217



william.haag@jacobs.com

Thank You!



MSDProjectClear.org

(314) 768-6260



@MSDProjectClear



Metropolitan St. Louis Sewer District